

TUTORIAL 4: Detail Development

(start on Tuesday 27th July; Final submission by 14H00 Tuesday 10th Aug. Total duration = 2 weeks)

INTENTION: to understand and communicate details with emphasis on both product and process.

PROJECT

11 projects have been selected from the modelling exercises of last semester. 8 of the projects are presented in the booklet entitled "Modelling Technology" (the booklet is available in the library and on vula). The three other buildings are the Weaver's Nest, Bijbou Cultural Centre, and the Tree House.

It is clear that all models and their descriptions stop at the level of layering (placement of elements). In this project you are now required to take the project to detail level.

Form new teams based on the selected projects as per the framework below:

Building X			
	Original member	New member	Focus
New team1	Original member 1	New member 1	Focus 1
New team2	Original member 2	New member 2	Focus 2
New team3	Original member 3	New member 3	Focus 3

Each original team member pairs up with another student to form a new team. A **segment** of the model is then split up into three main parts, each part to be handled by a new team:

Focus 1: foundation to just above ground level (including waterproofing, thresholds...)

Focus 2: openings (sills, lintels, frames, mullions, glazing, solar shading attachments)

Focus 3: roof details (wall plate, gutters, flashings, covering, structural elements connection details)

The above focus areas may however be reshuffled as needed to communicate the building better or to achieve equitable distribution of workload.

It is important that you annotate (what is it, how big is it, how and to what is it attached, any special features e.g. laid to falls...). Also write brief notes explaining the functional and aesthetic considerations of the details.

Draw 3D details at scale 1:10 or bigger. Zoom in important details where necessary to convey information. Use a visual scale so that it is easy to present the details using different media. It is recommended that you A1 paper, portrait, per focus area. Itemise so that it is possible to build the detail stage by stage (within each focus area and for the building as a whole). All teams working on the same building work together must coordinate from start to end to ensure that the end is well coordinated.

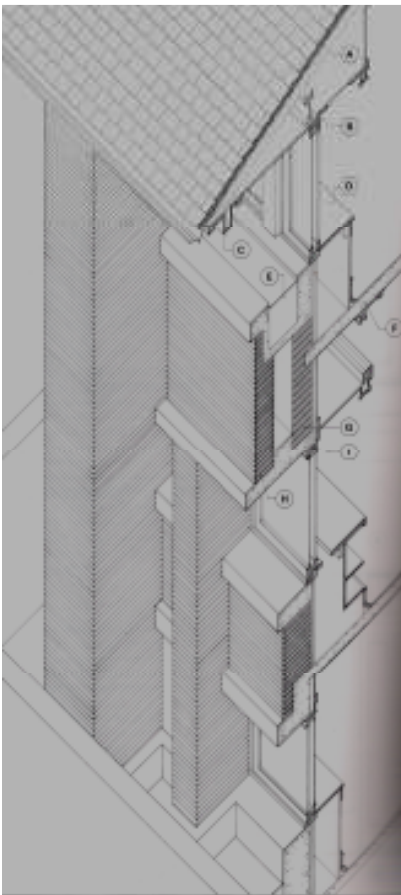
Submission

- pdf file that demonstrates step by step construction of the details and of the entire building.
- Classroom presentation (15min during tut time) by all members working on the same building
- A concise printout for your portfolio (indicating the area where you focused)

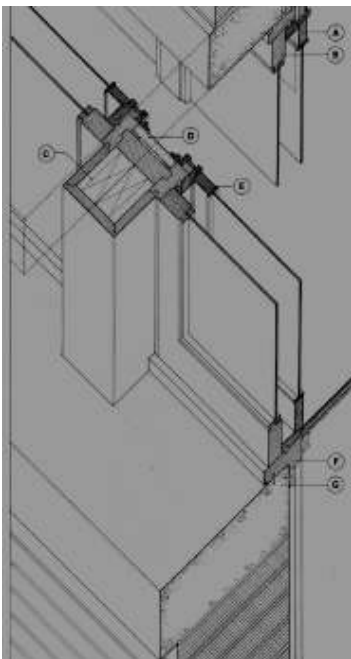
Assessment:

- Punctual submission
- Good construction detailing and annotation
- Communication value and appeal of submissions and presentations
- Good teamwork

Dr Tom Sanya
Peter Buttgens
Anton Heyn
Andrew Swain



Frank Lloyd Wright: D.D. Martin House. Detail through external wall from p182 of "the Details of Modern Architecture Vol. 1" by Edward R. Ford.



Frank Lloyd Wright: D.D. Martin House. Detail from p192 of "the Details of Modern Architecture Vol. 1" by Edward R. Ford.