

See discussions, stats, and author profiles for this publication at: <https://www.researchgate.net/publication/258865412>

Platinum promotion of Au/Al₂O₃ catalysts for glycerol oxidation: activity, selectivity and deactivation

ARTICLE *in* JOURNAL- SOUTH AFRICAN INSTITUTE OF MINING AND METALLURGY · MARCH 2012

Impact Factor: 0.18

READS

21

3 AUTHORS, INCLUDING:



[Jennifer M. Case](#)

University of Cape Town

43 PUBLICATIONS 655 CITATIONS

[SEE PROFILE](#)



[Eric Van Steen](#)

University of Cape Town

107 PUBLICATIONS 1,795 CITATIONS

[SEE PROFILE](#)



Platinum promotion of Au/Al₂O₃ catalysts for glycerol oxidation: activity, selectivity and deactivation

by M. Royker*, J. Case*, and E. van Steen*

Synopsis

Gold has been demonstrated as a possible catalyst for oxidation reactions. Some evidence for a possible promotion effect of platinum has also been recorded. The influence of platinum as promoter for Au/ γ -Al₂O₃ prepared via anionic ion-exchange for the oxidation of glycerol was investigated in a batch reactor at 60°C. It is inferred that the addition of platinum reduces the catalytic activity and the rate of deactivation, resulting in an overall higher final conversion of glycerol with increasing platinum loading. The addition of platinum to the catalyst favours the formation of the desired product, glyceric acid.

Keywords

gold-platinum catalysts, bimetallic catalysts, alumina, glycerol, oxidation.

Introduction

The production of biodiesel via trans-esterification of triglycerides yields glycerol as a side-product (Ma and Hanna, 1999). Approximately 100 kg of glycerol is formed per ton of biodiesel produced. Hence, the commercial viability of biodiesel production also depends on the available market for glycerol. Although glycerol itself is a useful chemical used in drugs, oral care products and food, (Morrison, 2000), its market is far too small to take up a significant amount of glycerol produced from a growing biodiesel market, necessitating the development of glycerol as a platform chemical (Zhou *et al.*, 2008). Selective oxidation of glycerol (preferably using air) is the preferred method to generate other chemical building blocks, such as dihydroxyacetone, glyceric acid, and tartronic acid.

Supported gold catalysts have been shown to be active for the selective oxidation of glycerol to glyceric acid using oxygen (Carretin *et al.*, 2003; Porta and Prati, 2004; Demirel-Gülen *et al.*, 2005; Demirel *et al.*, 2007a). The oxidation of alcohols and polyols over gold catalysts requires alkaline conditions (Carretin *et al.*, 2003), since the first step in the oxidation is the proton abstraction from glycerol (Ketchie *et al.*, 2007). Furthermore,

oxygen from the hydroxyl ion is incorporated into the product acid. The hydroxyl ion is regenerated via O₂ reduction with water (Zope *et al.*, 2010).

The catalytic oxidation of glycerol can yield a multitude of products via a series of consecutive and parallel reactions. Control of product selectivity is of great importance to minimize the required separation processes to obtain the pure product compounds. Glycerol can be oxidized to glycerinaldehyde, which is under basic conditions rapidly converted into dihydroxyacetone. Glyceric acid can be formed either directly from glycerol or in a consecutive reaction involving glycerinaldehyde. The consecutive oxidation of glyceric acid yields tartronic acid.

The oxidation of glycerol may lead to the formation of degradation products such as glycolic acid, oxalic acid, acetic acid, formic acid, and CO_x. Supported gold catalysts have been reported to be selective towards the formation of glyceric and glycolic acid (Porta and Prati, 2004; Ketchie *et al.*, 2007), with the latter formed directly from glycerol in a parallel pathway.

Bimetallic gold-platinum catalysts have been reported to be more active than monometallic gold-based catalysts (Bianchi *et al.*, 2005; Demirel *et al.*, 2007a) increasing the activity (expressed per gram of metal) by up to 80 percent. A similar enhancement was observed by alloying gold with palladium (Dimitratos *et al.*, 2009).

Supported gold catalysts are typically supported on carbon. However, the harsh conditions experienced typically in liquid-phase reactions require a highly mechanically stable support (Villa *et al.*, 2010). In this study, the performance of monometallic gold

* Centre for Catalysis Research, Department of Chemical Engineering, University of Cape Town.
© The Southern African Institute of Mining and Metallurgy, 2012. SA ISSN 0038-223X/3.00 + 0.00. Paper received Nov. 2009; revised paper received Jun. 2011.

Platinum promotion of Au/Al₂O₃ catalysts for glycerol oxidation

and bimetallic Au-Pt catalysts supported on alumina for the liquid-phase oxidation of glycerol is investigated.

Experimental

Catalyst preparation

A monometallic gold catalyst and two bimetallic gold-platinum catalysts supported on γ -Al₂O₃ (Puralox SCCa 5-150, Sasol Germany; $S_{\text{BET}} = 162 \text{ m}^2/\text{g}$, $V_{\text{pore}} = 0.47 \text{ cm}^3/\text{g}$, $d_p < 250 \text{ }\mu\text{m}$) with a total metal loading of 2.2 wt.% were prepared.

Gold was loaded on to the support via direct anionic exchange. A solution containing 0.5, 0.2, and 0.1 g/l for the monometallic and the two bimetallic catalysts, respectively, and pH of approximately 4.5 was prepared from a HAuCl₄ stock solution containing 250 g Au/l (Mintek). The pH of the solution was adjusted by the addition of a dilute NaOH solution. 10 g of alumina support was added to 1 litre of the gold-containing solution. The mixture was stirred (700 r/min) for 22 hours at room temperature. The gold-containing catalyst precursor was filtered off and washed with deionized water. The catalyst precursor was subsequently reslurried in 250 ml of an aqueous ammonia (25 wt.%) solution to remove residual chloride present in the catalyst. The catalyst precursor was filtered off after 20 minutes and washed with deionized water. Subsequently, the catalyst was dried in an oven at 110°C for 10 minutes and calcined in hydrogen at 200°C for 2 hours.

Slurry impregnation was used to deposit platinum on to the (gold-loaded) support. The required amount of tetraamine platinum tetrachloride monohydrate ((NH₃)₄PtCl₂·H₂O; Strem Chemicals) was dissolved in 50 ml of deionized water and added to the support. The solution was removed in a rotary evaporator operating at 80°C and 250 mbar. The catalyst was subsequently calcined in hydrogen at 200°C for 2 hours.

Catalyst characterization

The metal loading on the catalyst was determined using AAS after digesting a sample of the catalyst in HF/HCl. An initial estimate on the metal crystallite size distribution on the synthesized catalysts was obtained from transmission electron microscopy (TEM) images, recorded on a JEM 1200EXII (JEOL) operating at 120 kV. Energy dispersive X-ray analysis (EDX) was used to distinguish between gold and platinum crystallites.

Catalyst testing

The liquid phase glycerol oxidation was performed in a 500 ml three-necked round bottomed flask equipped with an overhead condenser at pH 10, a temperature of 60°C, and atmospheric pressure. Before each run, 4 ml of 0.3 M NaOH solution and 0.2 g of catalyst was added to 200 ml of deionized water. The flask was placed in a water bath and the solution was stirred at 400 r/min while maintaining the temperature at 60°C. Oxygen was sparged through the solution at a rate of 300 ml(NTP)/min. After 2 hours, 1 ml of a 6.84 M glycerol solution was injected into the solution marking the start of the reaction. The pH was controlled at pH 10 by titrating the solution with a 0.3 M NaOH solution using an auto-titrator (Tritoline Alpha plus). Samples (1 ml)

Table 1

Physio-chemical characteristics of the synthesized catalysts and their activity in the glycerol oxidation

Catalyst	w _{Au} , wt.-%	w _{Pt} , wt.-%	dAu, nm	TOF ^a , hr ⁻¹
Au ₁₀₀	2.2	0	4.2±1.3	602
Au ₆₃ Pt ₃₇	1.4	0.8	2.9±1.0	685
Au ₂₈ Pt ₇₂	0.6	1.6	2.8±1.1	432

^a Turn-over frequency based on the number of moles of glycerol converted after a reaction time of 10 min relative to the total number of moles of metal loaded in the reactor

of the reaction mixture were taken every 10 minutes and were immediately filtered to remove any catalyst from the sample.

The products of the liquid-phase glycerol oxidation were separated by HPLC using a Biorad column (Biorad Aminex HPX-87-H, 300 mm × 7.8 mm) and an aqueous 0.01 M H₂SO₄ solution as the mobile phase (flow rate 0.6 ml/min) and detected with a RI detector and UV detector operating at 210 nm. The products were identified and their response factors were determined using reference compounds of the expected oxidation products.

Results and discussion

Table 1 shows an overview of the catalysts used in this study. The total metal loading in the supported catalysts was kept constant at 2.2 wt.%. Hence, the gold content in the bimetallic catalyst was reduced by 37 percent and 72 percent respectively.

Gold was loaded onto the support via direct anionic exchange. The loading efficiency of gold onto alumina using direct anionic exchange from an aurochloric acid solution at pH of 5 ranged from 44–69 percent. The uptake of anionic gold complexes from the solution at pH of approximately 5 can be reasonably described using a Langmuir isotherm (see Figure 1). The maximum amount of gold loaded on this support would then correspond to approximately 2.8 wt.%, corresponding to 0.54 Au atoms per square nanometre, which is approximately 0.5 times the uptake reported for the

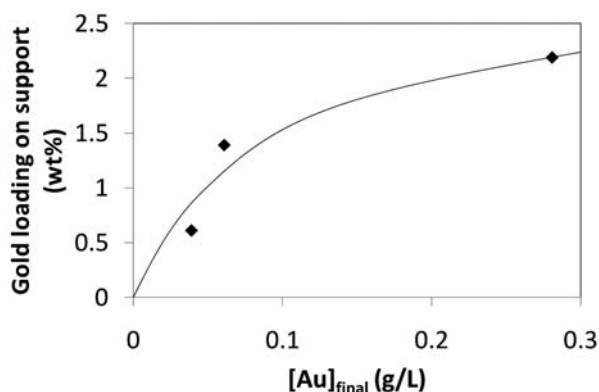


Figure 1—Uptake of gold from aurochloric acid solution by γ -Al₂O₃ at pH of 5 (solid line represents model fit to simple Langmuir isotherm)

Platinum promotion of Au/Al₂O₃ catalysts for glycerol oxidation

uptake of PtCl₆²⁻ on alumina (Regalbuto *et al.*, 1999). This difference can be explained in terms of the differences in the geometry of the adsorbed complexes.

A narrow gold crystallite size distribution is obtained via direct anionic exchange of aurochloric acid on to γ -Al₂O₃ (see Figure 2). It is interesting to note that the average gold crystallite size in the monometallic gold catalysts is approximately 50 percent larger than that in the bimetallic gold-platinum crystallites. The gold uptake during the synthesis of the monometallic gold catalyst represents approximately 75% of the maximum uptake of the gold chloride complex by the support, whereas the gold uptake during the synthesis of the bimetallic gold-platinum catalysts represents less than 50 percent of the maximum uptake. It might be speculated that the high gold density may lead to some sintering in the following heat treatment(s).

Figure 3 shows the glycerol conversion as a function of the reaction time. The monometallic gold catalyst, Au₁₀₀, shows a conversion of approximately 34 percent after a reaction time of 10 minutes. The conversion of glycerol does not increase appreciably further after this reaction time—indicating severe and rapid deactivation of the catalyst. The bimetallic catalyst, Au₆₃Pt₃₇, shows after a reaction time of 10 minutes a slightly higher conversion of approximately 39 mol%, which increases rather slowly to approximately 55 mol% after 1 hour. The slow increase in the conversion followed by the initial high conversion indicates that this catalyst deactivated, but less severely than the monometallic gold catalyst. The bimetallic gold-platinum catalyst with the lowest gold loading, Au₂₈Pt₇₂, showed the lowest initial conversion of approximately 26 mol% after a reaction time of 10 minutes. The conversion of glycerol increases steadily up

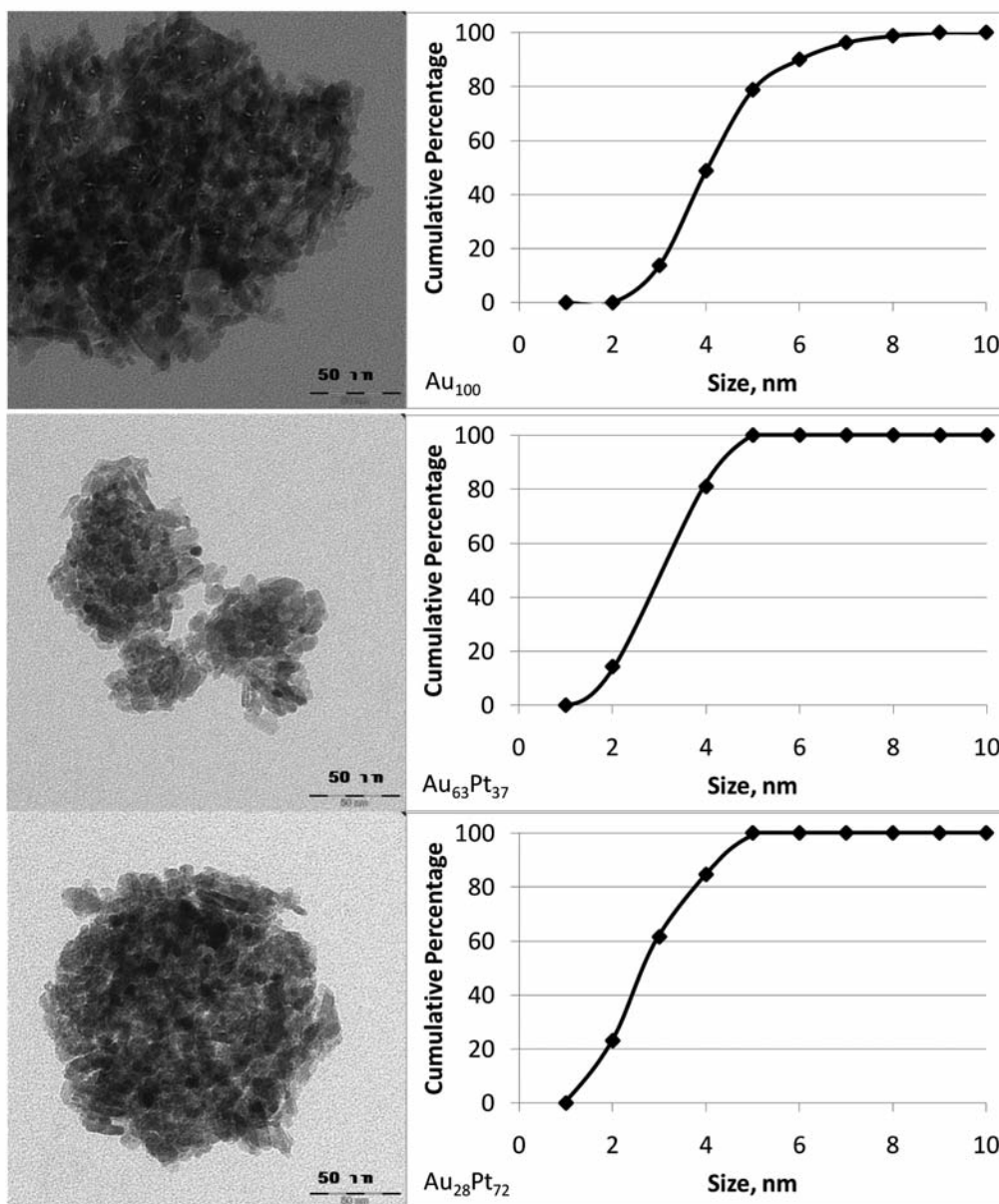


Figure 2—TEM images and crystallite size distribution of Au₁₀₀ (top), Au₆₃Pt₃₇ (middle), and Au₂₈Pt₇₂ (bottom)

Platinum promotion of Au/Al₂O₃ catalysts for glycerol oxidation

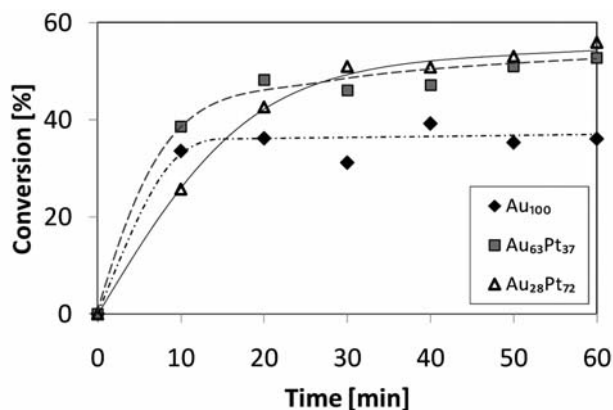


Figure 3—Conversion of glycerol as a function of reaction time ($T = 60^{\circ}\text{C}$, atmospheric pressure, $\text{pH} = 10$; $V_{\text{O}_2} = 300 \text{ ml(NTP)/min}$; $[\text{Glycerol}]_{\text{initial}} = 0.03 \text{ M}$)

to 30 minutes, after which the conversion increases only slightly, again indicating deactivation of the catalyst. The two bimetallic catalysts reached final conversions that were close to each other.

The turnover frequency for the glycerol conversion (based on the total number of moles of metal in the reactor) of the alumina supported catalysts are in the same range as those reported for Au supported on MgAl₂O₄ spinels (Villa *et al.*, 2010), for Au-Pt on carbon (Dimitratos *et al.*, 2006a), and for Au-Pd on carbon (Dimitratos *et al.*, 2006b). It should further be noted that the average gold crystallite size in the monometallic gold catalyst was only 50 percent larger than that in the bimetallic gold-platinum catalysts. Hence, the turnover frequency expressed per surface gold atom decreases with increasing platinum content in the catalyst, if it can be assumed that the gold surface area is adequately represented by the average crystallite size of the gold crystallites detected by TEM.

The deactivation in liquid-phase reactions might be ascribed to sintering, leaching, metal oxidation, poisoning, or by formation of oligomeric/polymeric species (Besson and Gallezot, 2003). Leaching is typically observed via re-use of the spent catalyst and was observed for Au/CeO₂ (Demirel *et al.*, 2007b), although it is known that leaching from alumina support is more facile than from, for example, carbon support materials (Besson and Gallezot, 2000). Metal oxidation is not expected in noble metal catalysed oxidation reactions. Hence, possible mechanisms for catalyst deactivation are sintering, (self-)poisoning by product compounds, and deposition of oligomeric species on the surface. The initially more active monometallic gold catalyst is more prone to deactivation than the bimetallic Au₆₃Pt₃₇ catalyst, which in turn deactivates faster than the bimetallic Au₂₈Pt₇₂ catalyst. The monometallic gold catalyst has on average larger gold crystallites than the bimetallic Au-Pt catalysts. Hence, the monometallic gold catalyst is expected to deactivate the least, if sintering (or leaching) is the dominant deactivation mechanism. Self-poisoning by product compounds over 'over-oxidation' (Besson and Gallezot, 2000) could be the cause of the observed deactivation order, since more active catalysts are then expected to deactivate faster.

Dihydroxyacetone was the main product observed in the oxidation of glycerol (see Figure 4). It should be noted that the low selectivity for dihydroxyacetone observed with the monometallic gold catalyst is caused by the large amount of coke obtained with this catalyst, thus substantiating the high rate of deactivation obtained with this catalyst (*vide supra*). The selectivity for dihydroxyacetone decreases gradually with time, indicating the secondary conversion of dihydroxyacetone. Dihydroxyacetone is thought to form from the base catalysed tautomerisation of the primary oxidation product glyceraldehyde. However, it can be inferred by extrapolating the selectivity of dihydroxyacetone to a reaction time of zero that other products (and in particular glyceric acid) are also formed as primary products in the oxidation of glycerol. This can be seen in Figure 5.

The selectivity of glyceric acid increases slowly with time, as can be seen in Figure 5. The same trend is observed for glycolic acid. This, together with the fact that selectivity to dihydroxyacetone decreases over the same time is in accordance with the proposed mechanism wherein glyceric and glycolic acid forms as secondary products upon further oxidation of dihydroxyacetone (Ketchie *et al.* 2007).

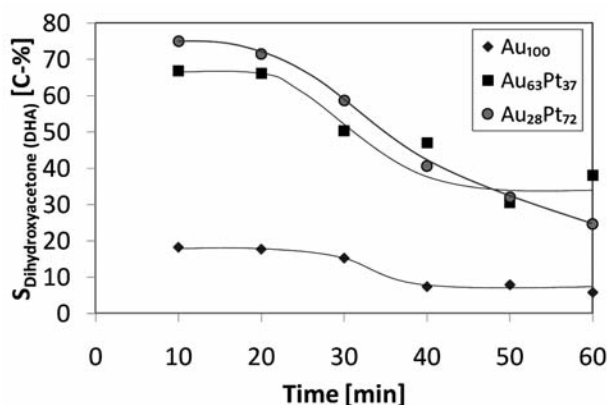


Figure 4—Selectivity for dihydroxyacetone in the conversion of glycerol as a function of reaction time ($T = 60^{\circ}\text{C}$, atmospheric pressure, $\text{pH} = 10$; $V_{\text{O}_2} = 300 \text{ ml(NTP)/min}$; $[\text{Glycerol}]_{\text{initial}} = 0.03 \text{ M}$)

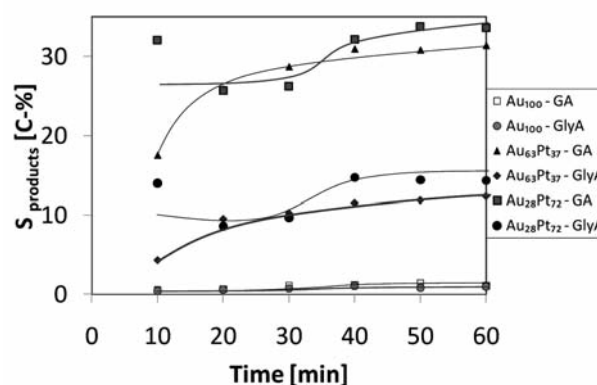


Figure 5—Selectivity for glyceric acid (GA) and glycolic acid (GlyA) in the conversion of glycerol as a function of reaction time ($T = 60^{\circ}\text{C}$, atmospheric pressure, $\text{pH} = 10$; $V_{\text{O}_2} = 300 \text{ ml(NTP)/min}$; $[\text{Glycerol}]_{\text{initial}} = 0.03 \text{ M}$)

Platinum promotion of Au/Al₂O₃ catalysts for glycerol oxidation

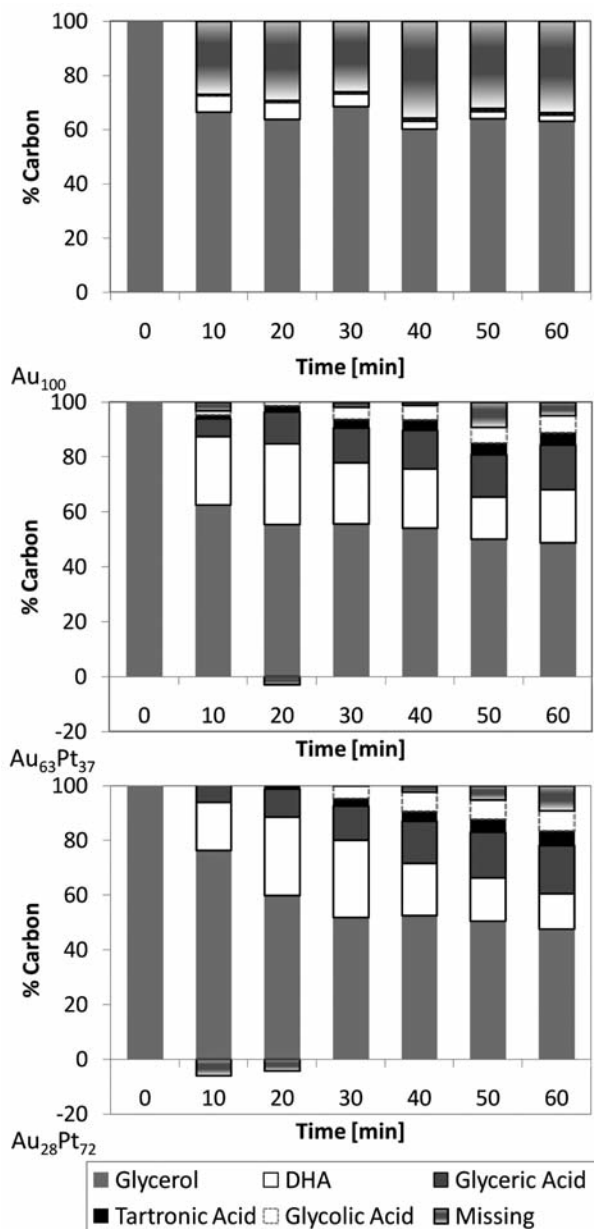


Figure 6—Carbon balance for Au₁₀₀ (top), Au₆₈Pt₃₂ (middle) and Au₂₈Pt₇₂ (bottom) in the conversion of glycerol as a function of reaction time ($T = 60^{\circ}\text{C}$, atmospheric pressure, $\text{pH} = 10$; $V_{\text{O}_2} = 300 \text{ ml(NTP)/min}$; $[\text{Glycerol}]_{\text{initial}} = 0.03 \text{ M}$)

Tartronic acid was also identified in the product samples but was found to have a selectivity of less than 10 percent and is not shown in Figure 4. The four products identified appear to be the main products from the oxidation reaction over the AuPt catalysts. A carbon balance performed over the course of the reaction confirms this, as can be seen in Figure 6. The missing carbon is less than 10 percent for both bimetallic catalysts. There is approximately 30 percent carbon unaccounted for with Au₁₀₀. This explains the greater deactivation of the monometallic catalyst, since the missing carbon is most likely coke. The bimetallic catalysts, having less gold and therefore a slower deactivation, are not prone to the same degree of coke formation.

Conclusions

This study focuses on an alternative, environmentally friendly way of producing useful chemicals from a renewable source, i.e. the heterogeneously catalysed oxidation of glycerol under atmospheric pressure and mild temperature and controlled pH conditions with oxygen as the oxidizing agent. Alumina-supported gold catalysts were prepared by anionic ion exchange and some impregnated with platinum. The activity and selectivity in the oxidation reaction of the monometallic gold catalyst was compared to that of the bimetallic gold-platinum catalysts. The gold loading on the catalysts prepared by ion exchange was determined by atomic absorption spectroscopy. Platinum was then impregnated to achieve a total metal loading equal to the highest gold loading. TEM images were obtained and analysed to obtain average gold crystallite size.

The bimetallic catalysts achieve a 20 percent higher conversion in the oxidation reaction as compared to monometallic gold. The main products achieved with the bimetallic catalysts were dihydroxyacetone, glyceric acid, glycolic acid, and tartronic acid. These products, together with the unconverted glycerol, make up 90 percent of the carbon in the system. For monometallic gold, the unconverted glycerol and the above four products identified make up only 70 percent of the total carbon in the system, indicating the possible formation of coke. The bimetallic catalysts displayed a greater selectivity to dihydroxyacetone, glyceric acid, and glycolic acid as compared to monometallic gold. No significant activity was observed with the monometallic gold catalyst beyond 10 minutes and the glycerol conversion stayed constant, indicating deactivation of the catalyst. The bimetallic catalysts displayed a slower rate of deactivation and the carbon balance confirmed that it is likely that less coke was formed. In the catalysts investigated, it was found that the fraction of platinum in the bimetallic catalyst has no significant effect on conversion and selectivity.

References

- BESSON, M. and GALLEZOT, P. Selective oxidation of alcohols and aldehydes on metal catalysts. *Catalysis Today*, vol. 57, 2000. pp. 127–141.
- BESSON, M. and GALLEZOT, P. Deactivation of metal catalysts in liquid phase organic reactions. *Catalysis Today*, vol. 81, 2003. pp. 547–559.
- BIANCHI, C.L., CANTON, P., DIMITRATOS, N., PORTA, F., and PRATI, L. Selective oxidation of glycerol with oxygen using mono and bimetallic catalysts based on Au, Pd and Pt metals. *Catalysis Today*, vol. 102–103, 2005. pp. 203–212.
- CARRETTIN, S., McMORU, P., JOHNSTON, P., GRIFFIN, K., KIELY, C.J., and HUTCHINGS, G.J. Oxidation of glycerols using supported Pt, Pd, and Au catalysts. *Physical Chemistry Chemical Physics*, vol. 5, 2003. pp. 1329–1336.
- CLACENS, J.-M., POUILLOUX, Y., and BARRAULT, J. Selective etherification of glycerol to polyglycerols over impregnated basic MCM-41 type mesoporous catalysts. *Applied Catalysis A: General*, vol. 227, 2002. pp. 181–190.
- DEMIREL, S., LEHNERT, K., LUCAS, M., and CLAUS, P. Use of renewable for the production of chemicals: Glycerol oxidation over carbon supported gold catalysts. *Applied Catalysis B: Environmental*, vol. 70, 2007a. pp. 637–643.
- DEMIREL, S., KERN, P., LUCAS, M., and CLAUS, P. Oxidation of mono- and polyalcohols with gold: comparison of carbon and ceria supported catalysts. *Catalysis Today*, vol. 122, 2007b. pp. 292–300.

Platinum promotion of Au/Al₂O₃ catalysts for glycerol oxidation

- Demirel-Gülen, S., Lucas, M., and Claus, P. Liquid phase oxidation of glycerol over carbon supported gold catalysts. *Catalysis Today*, vol. 103, 2005. pp. 166–172.
- DIMITRATOS, N., MESSI, C., PORTA, F., PRATI, L., and VILLA, A. Investigation on the behavior of Pt(0)/carbon and Pt(0),Au(0)/carbon catalysts employed in the oxidation of glycerol with molecular oxygen in water. *Journal of Molecular Catalysis A: Chemical*, vol. 256, 2006. pp. 21–28.
- DIMITRATOS, N., SANCHEZ-LOPEZ, J.A., LENNON, D., PORTA, F., PRATI, L., and VILLA, A. Effect of particle size on monometallic and bimetallic (Au,Pd)/Con the liquid phase oxidation of glycerol. *Catalysis Letters*, vol. 108, 2006. pp. 147–153.
- KETCHIE, W.C., MURAYAM, M., and DAVIS, R.J. Promotional effect of hydroxyl on the aqueous phase oxidation of carbon monoxide and glycerol over support Au catalysts. *Topics in Catalysis*, vol. 44, 2007. pp. 307–317.
- MA, F. and HANNA, M.A. Biodiesel production: a review. *Bioresource Technology*, vol. 70, 1999. pp. 1–15.
- MORRISON, L.R. Glycerol. *Kirk Othmer Encyclopedia of Chemical Technology*. Wiley & Sons, New York, 2000.
- NAGATA, M., KIYOTSUKURI, T., IBUKI, H., TSUTSUMI, N., and SAKAI, W. Synthesis and enzymatic degradation of regular network aliphatic polyesters. *Reactive and Functional Polymers*, vol. 30, 1996. pp. 165–171.
- PORTA, F. and PRATI, L. Selective oxidation of glycerol to sodium glycerate with gold-on-carbon catalyst: and insight into reaction selectivity. *Journal of Catalysis*, vol. 224, 2004. pp. 397–403.
- REGALBUTO, J.R., NAVADA, A., SHADID, S., BRICKER, M.L., and CHEN, Q. An experimental verification of the physical nature of Pt adsorption onto alumina. *Journal of Catalysis*, vol. 184, 1999. pp. 335–348.
- VILLA, A., GAIASSI, A., ROSETTI, I., BIANCHI, C.L., VAN BENTHEM, K., VEITH, G.M., and PRATI, L. Au on MgAl₂O₄ spinels: the effect of support surface properties in glycerol oxidation. *Journal of Catalysis*, vol. 275, 2010. pp. 108–116.
- ZHOU, C.-H., BELTRAMINI, J.N., FAN, Y.-X., and LU, G.Q. Chemoselective catalytic conversion of glycerol as a biorenewable source to valuable commodity chemicals. *Chemical Society Reviews*, vol. 37, 2008. pp. 527–549.
- ZOPE, B.N., HIBBITTS, D.D., NEUROCK, M., and DAVIS, R.J. Reactivity of the gold/water interface during selective oxidation catalysis. *Science*, vol. 330, 2010. pp. 74–78. ◆