

# Acetabular Reconstruction using a 'Cone Cup' Prosthesis in a series of 13 Patients

Schalk W Klopper<sup>1</sup>, Henrik CF Bauer<sup>2</sup>, Thomas Hilton<sup>3</sup>

1. Faculty of Medicine and Health Sciences, Department of Surgery, Division of Orthopaedics, University of Cape Town, Cape Town, South Africa
2. Department of Molecular Medicine and Surgery, Karolinska Institute, Stockholm, Sweden; visiting professor in the Faculty of Medicine and Health Sciences, Department of Surgery, Division of Orthopaedics, University of Cape Town, Cape Town, South Africa
3. Groote Schuur Hospital and Life Vincent Pallotti Orthopaedic Hospital, Cape Town; Faculty of Medicine and Health Sciences, Department of Surgery, Division of Orthopaedics, University of Cape Town, Cape Town, South Africa

Klopper SW: ORCID ID <https://orcid.org/0000-0002-8756-0769>

Hilton TL: ORCID ID <https://orcid.org/0000-0002-6178-5062>

\*Corresponding author: [thomas@drthilton.com](mailto:thomas@drthilton.com)

*Department of Orthopaedics, Groote Schuur Hospital, H49 Main Road, Observatory, Cape Town 7925, South Africa*

## **Abstract**

### **Background**

Endoprosthetic reconstruction of major pelvic bone loss in oncology and revision arthroplasty surgery is associated with high complication rates. However, comparative data for reconstructive methods are limited. We present short-term clinical, radiological, and functional outcomes of the implantcast MUTARS® LUMIC® prosthesis for acetabular reconstruction after major pelvic bone resection or loss.

### **Methods**

The copyright of this thesis vests in the author. No quotation from it or information derived from it is to be published without full acknowledgement of the source. The thesis is to be used for private study or non-commercial research purposes only.

Published by the University of Cape Town (UCT) in terms of the non-exclusive license granted to UCT by the author.

Retrospective folder review from December 2019 to June 2022. Minimum follow up was 12 months. The inclusion criterion was all patients who underwent acetabular reconstruction with the implantcast MUTARS® LUMIC® cone cup prosthesis.

## **Results**

Thirteen patients were included in the study. The indication for pelvic resection was a primary bone tumour in five patients, metastatic bone disease in five and failed arthroplasty in three. Complications included 2 patients with dislocation, 3 with infection, and 1 with both. The overall complication rate was 46%. Median MSTS scores at 12 months assessed in 8 patients was 20.75 of 30 points.

## **Conclusion**

Our results are in agreement with other series, highlighting the problems of instability and deep infection. Patients without complications had an acceptable functional outcome.

**Level of Evidence:** Level 4

**Keywords:** acetabulum, endoprosthetic replacement, osteosarcoma, chondrosarcoma, metastatic bone disease, limb salvage, amputation, revision arthroplasty, pelvis

**Citation:** Klopper SW, W, Bauer HCF, Hilton TL. Acetabular Reconstruction using a 'Cone Cup' Prosthesis in a series of 13 Patients

**Copyright:** © 2023 Klopper SW. This is an open-access article distributed under the terms of the Creative Commons Attribution Licence, which permits unrestricted use, distribution, and reproduction in any medium, provided the original author and source are credited.

**Funding:** No funding was received for this study.

## **Conflict of interests:**

The authors declare they have no conflicts of interest that are directly or indirectly related to the research

## **INTRODUCTION**

Reconstruction of the acetabulum and proximal femur is often required after resection of pelvic tumours, pelvic discontinuity in revision arthroplasty or fractures with bone loss. Surgical reconstruction of these defects remains challenging due to the complex anatomy of the pelvis, the biomechanical forces at play and limited remaining bone stock.<sup>1-3</sup> Although the indications may differ, the problems of implant fixation, joint stability and infection remain.<sup>4,5</sup>

The reconstructive options after major bone acetabular bone loss include biological, composites and endoprostheses.<sup>5-8</sup> Currently modular endoprostheses are the preferred option for reconstruction, but because of the rapid development of computer-aided three-dimensional (3D) printing technology, 3D implants may become a viable alternative.<sup>9</sup>

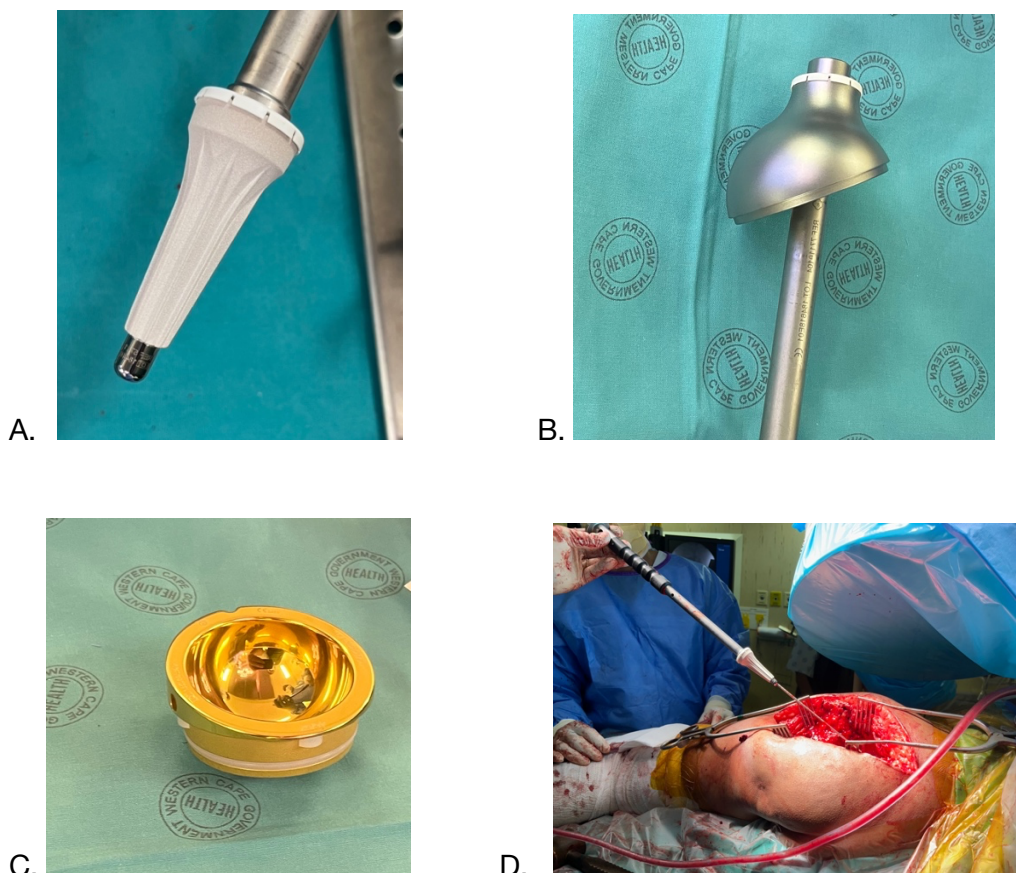
All reconstructive options in this field are associated with high rates of complications and there is no standout method since, owing to the rarity of these tumours as well as the difficulty of these procedures, there have not been many previous studies, and those that have been carried out consist mainly of small case series. Most current investigations are retrospective case series or cohort studies ranging from 9 – 126 patients (mean 49) and lack comparative data.<sup>10,11</sup>

Our paper aims to develop/further research on this topic by studying outcomes and reviewing surgical techniques.

## **METHODS:**

A retrospective review was carried out of the medical records and imaging of all patients who underwent pelvic reconstruction with a cone cup prosthesis. The study period was from December 2019 to October 2021 with a minimum follow-up of 12 months. Tumour resection was planned using plain film radiography, computed tomography (CT) and/or magnetic resonance imaging (MRI). All surgeries were performed by the same primary surgeon assisted by a variety of associates and nursing teams. First-generation cephalosporins were given intravenously prior to surgery and additional doses were given for 24 hours after the operation. Patients were instructed not to wear

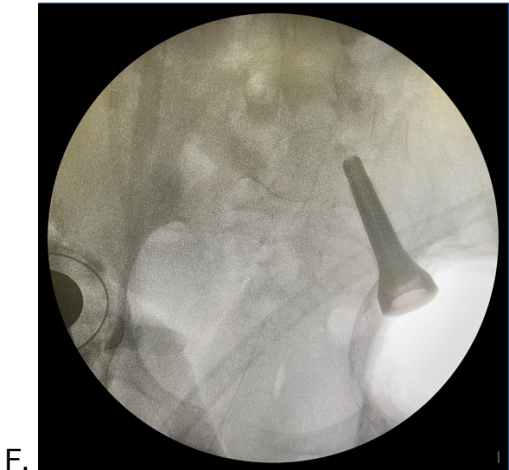
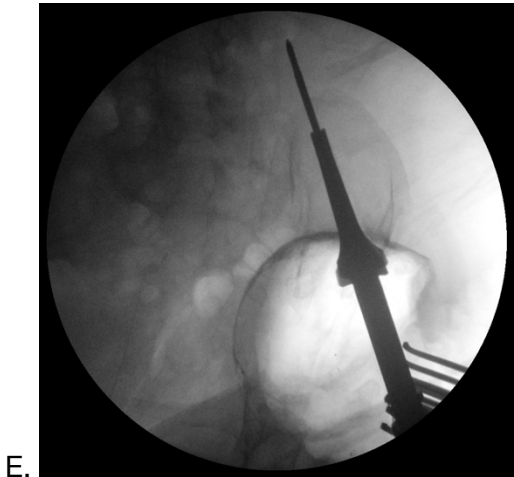
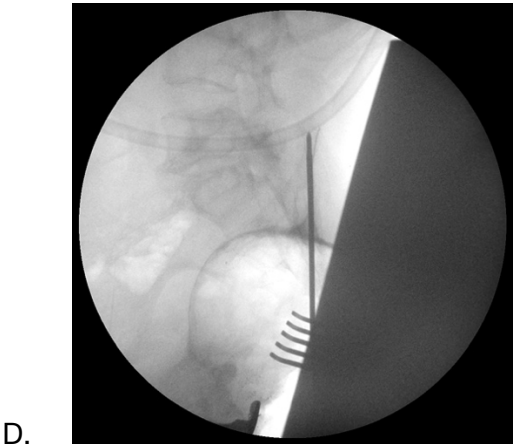
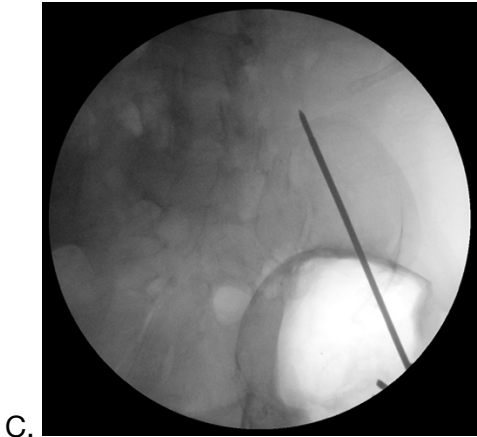
braces and primary total hip replacement physiotherapy protocols were used to mobilise them after the operation. MSTS scores were obtained for patients 12 months after the procedure.<sup>12</sup> The acetabular implant used was the implantcast MUTARS® LUMIC® cone cup.<sup>13</sup> The stem is designed to fit between the anterior and posterior cortices of the iliac wing, parallel to the sacroiliac joint and above the sciatic notch.<sup>14</sup> The articular design is modular and can be adjusted to achieve the maximum stability desired. Specialised meshed tubing, such as a Trevira Tube or an aortic graft, can be added around the construct for additional joint stability.<sup>13,15</sup> (Figure 1)

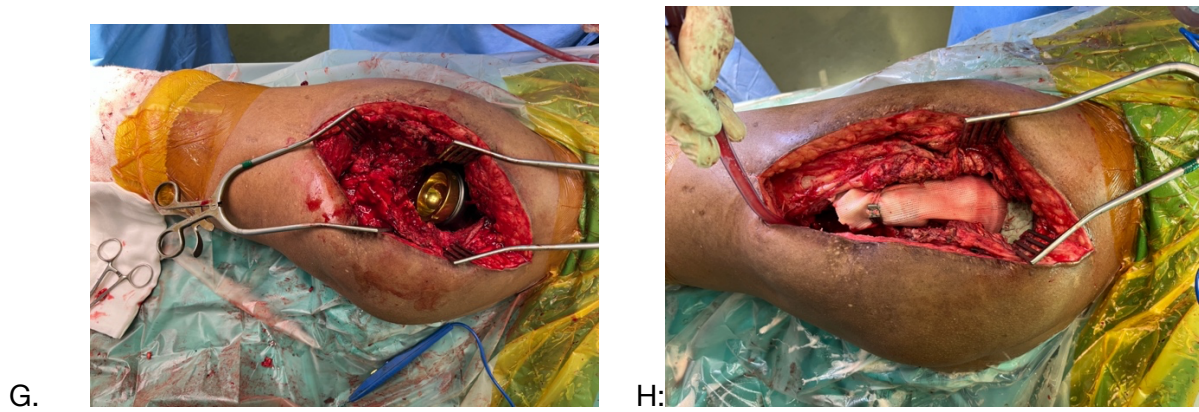


**Figure 1 A-D: The cone cup prosthesis and its components** A: Hydroxyapatite (HA) coated stem B: Cup C: Cup liner (in this case dual mobility) D: Clinical intra-operative picture of stem being implanted

The patient is positioned in a lateral decubitus position and bolsters are used to position the patient without obstructing fluoroscopy and to allow access for surgery. Once the pelvic resection has

been performed the guidewire is placed under fluoroscopic imaging. The iliac wing is reamed and the stem is implanted (Figure 2).





**Figure 2 A-H: Intra operative images of stem placement technique A and B: Patient positioning C and D: Guidewire placement E: Reaming F: Stem implantation G: Clinical Picture of Cone cup in pelvis H: Post procedure implant with Trevira Tube**

**RESULTS**

Patient results

13 patients (9 females) with a mean age of 64 years were identified for inclusion (*Table I*). 7 patients had metastatic bone disease, there were 3 primary sarcomas, and 3 were revision arthroplasty patients. At the final 12-month review, 8 patients were alive and 5 had died (4 of metastatic disease and one of other medical causes) after a median of 6 months.

**TABLE I: Basic demographics, follow-up and indications for surgery.**

VARIABLE	N=13
<b>Age(years)</b>	
N	13
Mean	63
Median(IQR)	67 (50,75)
Range	30- 84
<b>Gender</b>	
Male	4

Female	9
<b>Comorbidities</b>	2
Chronic Kidney Disease	1
HIV	2
Hypertension	4
None	6
Pacemaker for arrhythmia	1
<b>BMI</b>	
<35	10
>35	3
<b>ASA</b>	
2	13
<b>Diagnosis</b>	
Breast carcinoma	3
Vulva carcinoma	1
Cervix carcinoma	1
Multiple myeloma	2
Primary chondrosarcoma	2
Synovial sarcoma	1
Failed arthroplasty	3
<b>Indication</b>	
Acetabular primary sarcomatous lesion	3
Acetabular metastases	7
Failed arthroplasty	3
<b>Primary/Revision</b>	
Primary	9
Revision	4

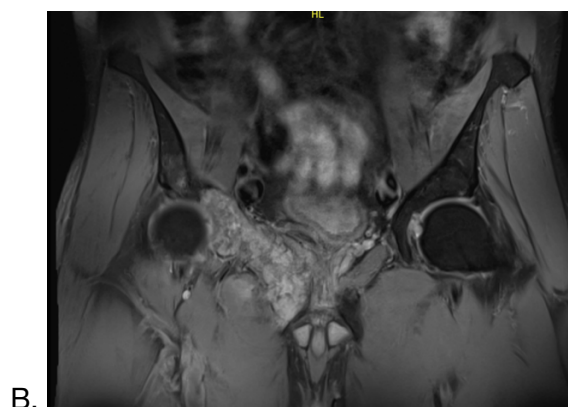
## Prosthetic results

10 of the cone cup implants were cemented and 3 uncemented. Dual mobility cups were used in 12 of cases. Five patients required augmentation of the acetabulum with cement and one required cement and Steinman pin augmentation. The decision about whether to augment or not was taken at the discretion of the surgeon, after consideration of how much bone stock remained and how stable the inserted stem was. A Trevira tumour tube was used in 2 patients. Femoral reconstruction included 9 cemented primary stems, 2 collarless uncemented stems and 2 proximal femur megaprotheses.

## Surgical results

The pelvic resections were Type 2 in 8 patients and Type 2–3 in 2 according to the Enneking and Dunham classification.<sup>16</sup> Surgical margins were adequate in all patients. The three patients (23%) who had revision arthroplasty had pelvic discontinuity rather than hemipelvectomy resections.

Skin incisions used were lateral in 11 cases and extended Kocher-Langenbeck in 2. The surgical approach to the hip was anterolateral in 10 patients and posterior in 2.





**Figure 3. Pre- and post-operative imaging of a patient with acetabular metastatic disease.**

A: Pre-operative AP pelvis x-ray B: pre-operative MRI showing extent of pelvic tumour C. Post-operative AP pelvis x-ray showing pelvic resection and implanted cone cup prosthesis D. Post-operative iliac oblique view x-ray showing pelvic resection and implanted cone cup prosthesis

**Table II: Henderson Classification of Segmental Endoprosthetic Failure**

Type of Failure	Mode of Failure	Description
<b>Mechanical</b>		
1	Soft Tissue Failure	Instability/dislocation, tendon rupture or aseptic wound dehiscence
2	Aseptic Loosening	Clinical and radiological evidence of loosening
3	Structural Failure	Periprosthetic or prosthetic fracture or deficient osseous supporting structure
<b>Non-Mechanical</b>		
4	Infection	Infection of endoprosthesis necessitating removal of device
5	Tumour Progression	Recurrence or progression of tumour with contamination of endoprosthesis

Complications were classified according to the Henderson Classification (Table II).<sup>17</sup> There were 5 Henderson Type complication (38 %), 2 mechanical and 3 non-mechanical.(Table III)

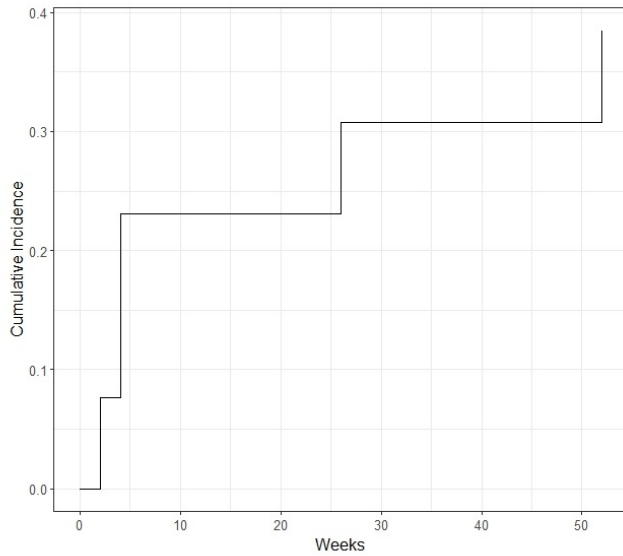
Two patients experienced one or more mechanical complications. (Type 1 and Type 3). A single dislocation (*Figure 5*) occurred in 2 patients within 28 days, and in one of these the cup also cut out (Type 3). These two patients underwent revision surgery: one required explantation and excision arthroplasty due to an unsalvageable joint, the other was converted to an acetabular cage with a captured cup. Deep infection (Type IV) occurred in three patients, two early in the postoperative period and one after 11 months. One patient was successfully treated with surgical debridement implant retention and intravenous antibiotics (DAIR). The two other patients died soon after developing infection and first-stage revision surgery due to a combination of primary malignant disease and perioperative complications.

**TABLE III: Follow-up and Complications over One-Year Period**

VARIABLE	N=13
<b>MSTS at 1 Year</b>	
Dead before 1 year	5
17	3
20	2
24	2
27	1
<b>Follow up at 1 Year</b>	
Dead	5
No complications	6
Type 1 complication: Dislocation	2
Type 3 complication: Cut Out	1
Type 4 complication: PJI	3
<b>Follow Up Period in Months</b>	
<b>1</b>	1
<b>6</b>	3

9	1
12	8

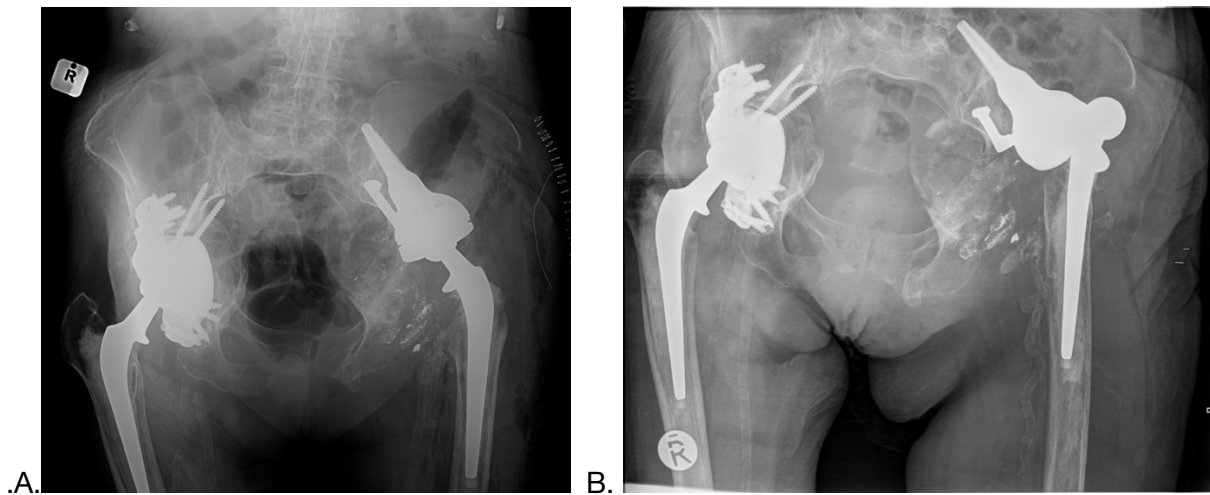
**Figure 4: Graph showing cumulative incidence of first complication:**



At Risk	13	10	10	7	7	7
Events	0	3	3	4	4	4

Graph showing the cumulative incidence of first complication (any type I to V) as assessed by competing risk analysis. Mortality was treated as a competing event.

Other complications included internal iliac artery occlusion likely due to local traction on the artery. This was attended to by the vascular surgery team and treated successfully with embolectomy alone. One patient had a sciatic nerve neuropraxia postoperatively, which resolved spontaneously after 6 weeks. This was thought to be due to a cement burn when augmenting the cup. In one patient an iatrogenic fracture of the greater trochanter was caused during implant insertion. This was managed conservatively. Hence, the overall complication rate was 46%.



**Figure 5 :**

**AP x-rays of pelvis in the same patient showing example of a cone cup dislocation** A: post-op B: at time of dislocation

Median MSTS scores at 12 month follow up for 8 available patients was 20.75 (17–27) out of 30 points.

**Discussion :**

Pelvic reconstruction after tumour excision or failed arthroplasty is a technically challenging procedure with a high risk of complications. There is no current literature to support a single best technique or approach to managing these patients. Here we report our findings using the cone cup implant in all patients.

Historically, Harrington et al. in 1981 described the use of Steinmann pins with cement augmentation to manage acetabular bone defects after tumour excision.<sup>18</sup> Prior to this there were no other feasible options for reconstructive surgery. Harrington’s method was found to have a high risk of complications. The main complication is dislocation due to the difficulty of deciding on the correct placement of the acetabular cup. Stability remains an issue today but since the use of navigation, modular acetabular cups cemented into the construct, modular femoral stems, proximal femoral replacements, and constrained liners, dislocation rates have decreased.<sup>19,20</sup>

While Harrington's techniques are still applied in the management of large pelvic defects and for less invasive procedures, such as percutaneous screw placement or cement augmentation in pelvic metastatic disease, further advances in modular implants like the implantcast MUTARS® LUMIC® cone cup and other endoprosthesis are proving to be valuable solutions for more complex reconstructions.<sup>8,19,21</sup>

Our retrospective observational study examined the short-term outcomes of patients treated with the implantcast MUTARS® LUMIC® cone cup prosthesis. In patients without complications, the implant provided a relatively simple and functional hip joint, despite the complex pathology and reconstructive requirements. Our MSTs score and complication rate correlate with current literature on the cone cup and other reconstructive methods.<sup>6,8,15,22-24</sup>

The cone cup is designed to bypass the anterior portion of the pelvic ring and distribute forces through the ilium above the sciatic notch and into the sacroiliac joint, sacrum, and spine. The procedure has shown good functional outcomes but there have been high complication rates.<sup>8</sup> Mechanical complications have been reported in 30% of cases in previous studies and can include dislocation or implant failure without dislocation, i.e. loosening.<sup>6</sup> Issa et al. reported a 58% complication rate over a period of 8-94 months, with all patients experiencing at least one complication. The main complications in their study were sepsis and dislocation, but the implant survival rates at 5 years were relatively acceptable at 75%.<sup>23</sup> Comparing the cone cup to other methods, Hipfl et al. reported complications of up to 40% using a stemmed pedestal cup, with deep infection being the most common complication.<sup>24</sup> Tsagozis et al. reported the successful reconstruction of metastatic acetabular defects using a modified Harrington procedure, which involved the placement of modular acetabular cups cemented into the construct with retrograde screws rather than Steinmann pins.<sup>20</sup> This technique demonstrated a decrease in dislocation rates and improved functional outcomes. Lastly, Volpin et al., in their systematic review, found that regardless of the choice of acetabular implant used to address acetabular bone loss, instability remained the most common reason for revision surgery.<sup>4</sup>

In our study, dislocations were observed in two patients, both occurring early after surgery and among the first patients in the cohort. This was thought to be related to a steep surgical learning curve in prosthetic placement and the need for the use of dual mobility implants. The procedure to insert a LUMIC® cone cup requires a complete understanding of patient setup methods and the use of intra-operative fluoroscopy to ensure accurate implant insertion into good bone for stability, and proper orientation of the prosthesis and acetabular cup to maximize stability. Navigation, where available, is a useful tool to aid the surgeon in achieving this, but it is not readily available in all centres. Most resections in our study were Type 2 pelvic resections, which involved the removal of all hip stabilizing structures and is believed to be a major contributing factor to instability and resulting in dislocation. The authors believe that using a standard primary femoral prosthesis over a proximal femoral megaprosthesis, where possible, helps maintain better stability by preserving the large abductor musculature. If concerns about potential dislocation persist, a tumour tube is used.

Infection was another major complication observed both in the current literature and in our patients. Of the total of 13 patients, three became infected, and of these one was salvaged successfully. The prosthesis was revised in the other two patients, but with poor outcomes. Multiple factors contribute to high infection rates in this patient cohort, including a cancer diagnosis, cancer treatment (chemotherapy and radiotherapy), systemic illness, prolonged surgical time, and blood loss. Patients who require this procedure for failed trauma or arthroplasty have often undergone multiple previous surgeries, which further increases the risk of infection.

The alternatives to reconstruction include iliofemoral arthrodesis, hindquarter amputation, or a "hanging" hip.<sup>25,26</sup> However, these options often leave patients with poor function and quality of life, disfigurement, significantly shortened leg, and significant psychological impact.<sup>18,27,28</sup> For these reasons, endoprosthetic reconstruction is usually chosen following acetabular resection.<sup>28-30</sup>

When examining functional outcomes, our mean MSTS score was 20.75 (out of 30). Although this score is not particularly high, the patients in our study experienced improved function and

independence compared to their baseline and what they would have had without reconstruction. Pre-operative MSTS for comparison is not possible or helpful because the patient still has their hip and pelvis and has relatively good function with pain often the cause for their limitation.

The literature has shown that limb-sparing surgery patients generally have higher MSTS scores than amputees.<sup>31</sup> The MSTS scoring system has limitations, it is largely a score of physical function and is usually scored by the clinician rather than the patient and often does not reflect the patient's general health or mental state.<sup>32,33</sup> The use of a single crutch or assistive walking device significantly decreases the MSTS score. MSTS scores in our patient series could be evaluated more positively considering alternative surgical options that leave the patient with an ablated limb or non-functional joint.

Advancements in CT technology and additive manufacturing have enabled the production of 3D printed custom prostheses, offering methods for viable defect reconstruction and prosthetic fixation into remaining bone, when standard implants like the cone cup will not suffice.<sup>1,34-36</sup>

### **Limitations:**

The observational retrospective design and small patient cohort limit the accuracy of the data. A multicentred international study is needed to include larger numbers. Longer follow-up is required, although high patient drop-out is expected, due to the poor prognosis that is associated with cancer patients. Further follow-up is needed to study late complications such as sepsis, dislocations, implant failure, loosening, and tumour recurrence rates, which would enhance the value of the research.

### **Conclusion:**

Reconstruction for large pelvic defects is a high-risk procedure with significant complication rates, regardless of the method of reconstruction. However, successful reconstruction offers better functional outcomes compared to no reconstruction or amputation. Careful planning, precise surgical technique, and infection prevention are crucial in minimizing complications. We consider

pelvic reconstruction and salvage surgery using the implantcast MUTARS® LUMIC® cone cup prosthesis to be a viable option. It offers modularity and is readily available as an off-the-shelf item.

### **Ethics statement**

The authors declare that this submission is in accordance with the principles laid down by the Responsible Research Publication Position Statements as developed at the 2nd World Conference on Research Integrity in Singapore, 2010.

Ethical approval number HREC 667/2021. For this retrospective study, formal consent was not required.

### **Declaration**

The authors declare authorship of this article and that they have followed sound scientific research practice. This research is original and does not transgress plagiarism policies.

**Funding:** No funding was received for this study.

**Conflicts of interests:** None

### **Author contributions**

SK: study design, data capture, state patient follow-up and scoring, first draft preparation, manuscript preparation

HCFB: data analysis, manuscript preparation

TLH: study conceptualisation and involved in all aspects of this article

**Acknowledgements:** Dr V Boskovic: Proofreading

### **ORCID**

Klopper SW: ORCID ID <https://orcid.org/0000-0002-8756-0769>

Bauer HCF: ORCID ID <https://orcid.org/0000-0002-3557-0252>

Hilton TL: ORCID ID <https://orcid.org/0000-0002-6178-5062>

### **References:**

1. Hilton T, Campbell N, Hosking K. Additive manufacturing in orthopaedics: Clinical implications. SA Orthopaedic Journal. 2017;16(2).

2. Iluridze GD, Bucharov A V., Karpenko VYu, Derzhavin VA. Results of modular endoprosthetic reconstruction of periacetabular bone defects in patients with tumors of the acetabulum and hip joint. *Siberian journal of oncology*. 2020 Apr 30;19(2):90–9.
3. Baauw M, van Hooff ML, Spruit M. Current Construct Options for Revision of Large Acetabular Defects. *JBJS Rev*. 2016 Nov 8;4(11).
4. Volpin A, Konan S, Biz C, Tansey RJ, Haddad FS. Reconstruction of failed acetabular component in the presence of severe acetabular bone loss: a systematic review. *Musculoskelet Surg*. 2019 Apr 13;103(1):1–13.
5. Menendez LR, Ahlmann ER, Falkinstein Y, Allison DC. Periacetabular Reconstruction with a New Endoprosthesis. *Clin Orthop Relat Res*. 2009 Nov;467(11):2831–7.
6. Bus MPA, Szafranski A, Sellevold S, Goryn T, Jutte PC, Bramer JAM, et al. LUMiC® Endoprosthetic Reconstruction after Periacetabular Tumor Resection: Short-term Results. *Clin Orthop Relat Res*. 2017 Mar;475(3):686–95.
7. Berry D, Muller M. Revision arthroplasty using an anti-protrusion cage for massive acetabular bone deficiency. *J Bone Joint Surg Br*. 1992 Sep;74-B(5):711–5.
8. Barrientos-Ruiz I, Ortiz-Cruz EJ, Peleteiro-Pensado M. Reconstruction After Hemipelvectomy With the Ice-Cream Cone Prosthesis: What Are the Short-term Clinical Results? *Clin Orthop Relat Res*. 2017 Mar;475(3):735–41.
9. Angelini A, Trovarelli G, Berizzi A, Pala E, Breda A, Ruggieri P. Three-dimension-printed custom-made prosthetic reconstructions: from revision surgery to oncologic reconstructions. *Int Orthop*. 2019 Jan 22;43(1):123–32.
10. Nayar SK, Kostakos TA, Savvidou O, Vlasis K, Papagelopoulos PJ. Outcomes of Hip Reconstruction for Metastatic Acetabular Lesions: A Scoping Review of the Literature. *Current Oncology*. 2022 May 26;29(6):3849–59.
11. Kostakos TA, Nayar SK, Alcock H, Savvidou O, Vlasis K, Papagelopoulos PJ. Acetabular reconstruction in oncological surgery: A systematic review and meta-analysis of implant survivorship and patient outcomes. *Surg Oncol*. 2021 Sep;38:101635.

12. Enneking WF, Dunham W, Gebhardt MC, Malawar M, Pritchard DJ. A system for the functional evaluation of reconstructive procedures after surgical treatment of tumors of the musculoskeletal system. *Clin Orthop Relat Res*. 1993 Jan;(286):241–6.
13. Fisher NE, Patton JT, Grimer RJ, Porter D, Jeys L, Tillman RM, et al. Ice-cream cone reconstruction of the pelvis: a new type of pelvic replacement: early results. *J Bone Joint Surg Br*. 2011 May;93(5):684–8.
14. Matharu GS, Mehdiian R, Sethi D, Jeys L. Severe pelvic bone loss treated using a coned acetabular prosthesis with a stem extension inside the ilium. *Acta Orthop Belg*. 2013 Dec;79(6):680–8.
15. Bus MPA, Boerhout EJ, Bramer JAM, Dijkstra PDS. Clinical outcome of pedestal cup endoprosthetic reconstruction after resection of a peri-acetabular tumour. *Bone Joint J*. 2014 Dec;96-B(12):1706–12.
16. Enneking WF, Dunham WK. Resection and reconstruction for primary neoplasms involving the innominate bone. *J Bone Joint Surg Am*. 1978 Sep;60(6):731–46.
17. Henderson ER, Groundland JS, Pala E, Dennis JA, Wooten R, Cheong D, et al. Failure mode classification for tumor endoprostheses: retrospective review of five institutions and a literature review. *J Bone Joint Surg Am*. 2011 Mar 2;93(5):418–29.
18. Harrington KD. The management of acetabular insufficiency secondary to metastatic malignant disease. *J Bone Joint Surg Am*. 1981 Apr;63(4):653–64.
19. Bagsby DT, Wurtz LD. Effectiveness of Constrained Liner Use During Harrington Hip Reconstruction in Oncology Patients. *J Arthroplasty*. 2017 Apr;32(4):1250–4.
20. Tsagozis P, Wedin R, Brosjö O, Bauer H. Reconstruction of metastatic acetabular defects using a modified Harrington procedure. *Acta Orthop*. 2015;86(6):690–4.
21. English DI, Lea WB, King DM, Tutton SM, Neilson JC. Minimally Invasive Stabilization with or without Ablation for Metastatic Periacetabular Tumors. *J Bone Joint Surg Am*. 2021 Jul 7;103(13):1184–92.

22. Issa SP, Biau D, Babinet A, Dumaine V, Le Hanneur M, Anract P. Pelvic reconstructions following peri-acetabular bone tumour resections using a cementless ice-cream cone prosthesis with dual mobility cup. *Int Orthop*. 2018 Aug;42(8):1987–97.
23. Erol B, Sofulu O, Sirin E, Saglam F, Buyuktopcu O. Reconstruction after periacetabular tumor resection with Lumic® endoprosthesis: What are the midterm results? *J Surg Oncol*. 2021 Feb;123(2):532–43.
24. Hipfl C, Stihsen C, Puchner SE, Kaider A, Dominkus M, Funovics PT, et al. Pelvic reconstruction following resection of malignant bone tumours using a stemmed acetabular pedestal cup. *Bone Joint J*. 2017 Jun;99-B(6):841–8.
25. Radin EL, Maquet P, Parker H. Rationale and indications for the “hanging hip” procedure: a clinical and experimental study. *Clin Orthop Relat Res*. 1975 Oct;(112):221–30.
26. Grimer RJ, Chandrasekar CR, Carter SR, Abudu A, Tillman RM, Jeys L. Hindquarter amputation: is it still needed and what are the outcomes? *Bone Joint J*. 2013 Jan;95-B(1):127–31.
27. Grimer RJ, Carter SR, Pynsent PB. The cost-effectiveness of limb salvage for bone tumours. *J Bone Joint Surg Br*. 1997 Jul;79(4):558–61.
28. Fuchs B, O’Connor MI, Kaufman KR, Padgett DJ, Sim FH. Iliofemoral arthrodesis and pseudarthrosis: a long-term functional outcome evaluation. *Clin Orthop Relat Res*. 2002 Apr;(397):29–35.
29. Tohtz S, Katterle H, Matziolis G, Drahn T, Perka C. The reconstruction of extended acetabular bone defects in revision hip arthroplasty – risk factors for migration and loosening using the pedestal cup. *Z Orthop Unfall*. 2007;145(2):176–80.
30. Perka C, Schneider F, Labs K. Revision acetabular arthroplasty using a pedestal cup in patients with previous congenital dislocation of the hip – four case reports and review of treatment. *Arch Orthop Trauma Surg*. 2002 May;122(4):237–40.
31. Han G, Bi WZ, Xu M, Jia JP, Wang Y. Amputation Versus Limb-Salvage Surgery in Patients with Osteosarcoma: A Meta-analysis. *World J Surg*. 2016 Aug;40(8):2016–27.

32. Uehara K, Ogura K, Akiyama T, Shinoda Y, Iwata S, Kobayashi E, et al. Reliability and Validity of the Musculoskeletal Tumor Society Scoring System for the Upper Extremity in Japanese Patients. *Clin Orthop Relat Res*. 2017 Sep;475(9):2253–9.
33. Janssen SJ, van Rein EAJ, Paulino Pereira NR, Raskin KA, Ferrone ML, Hornicek FJ, et al. The Discrepancy between Patient and Clinician Reported Function in Extremity Bone Metastases. *Sarcoma*. 2016;2016:1014248.
34. Mugla W, Bauer H, Vogel J, Hosking K, Campbell N, Hilton T. Modular prosthetic reconstruction for primary bone tumours of the distal tibia in ten patients. *SA Orthopaedic Journal*. 2022;61(2):95–9.
35. Ji T, Yang Y, Tang X, Liang H, Yan T, Yang R, et al. 3D-Printed Modular Hemipelvic Endoprosthesis Reconstruction Following Periacetabular Tumor Resection: Early Results of 80 Consecutive Cases. *J Bone Joint Surg Am*. 2020 Sep 2;102(17):1530–41.
36. Ameri BJ, O’Keefe S, Lima D, Higuera-Rueda C, Manrique J. Robotic-Assisted Pelvic Reconstruction After Metastatic Renal Cell Carcinoma Resection: A Case Report. *JBJS Case Connect*. 2021 Nov 11;11(4).