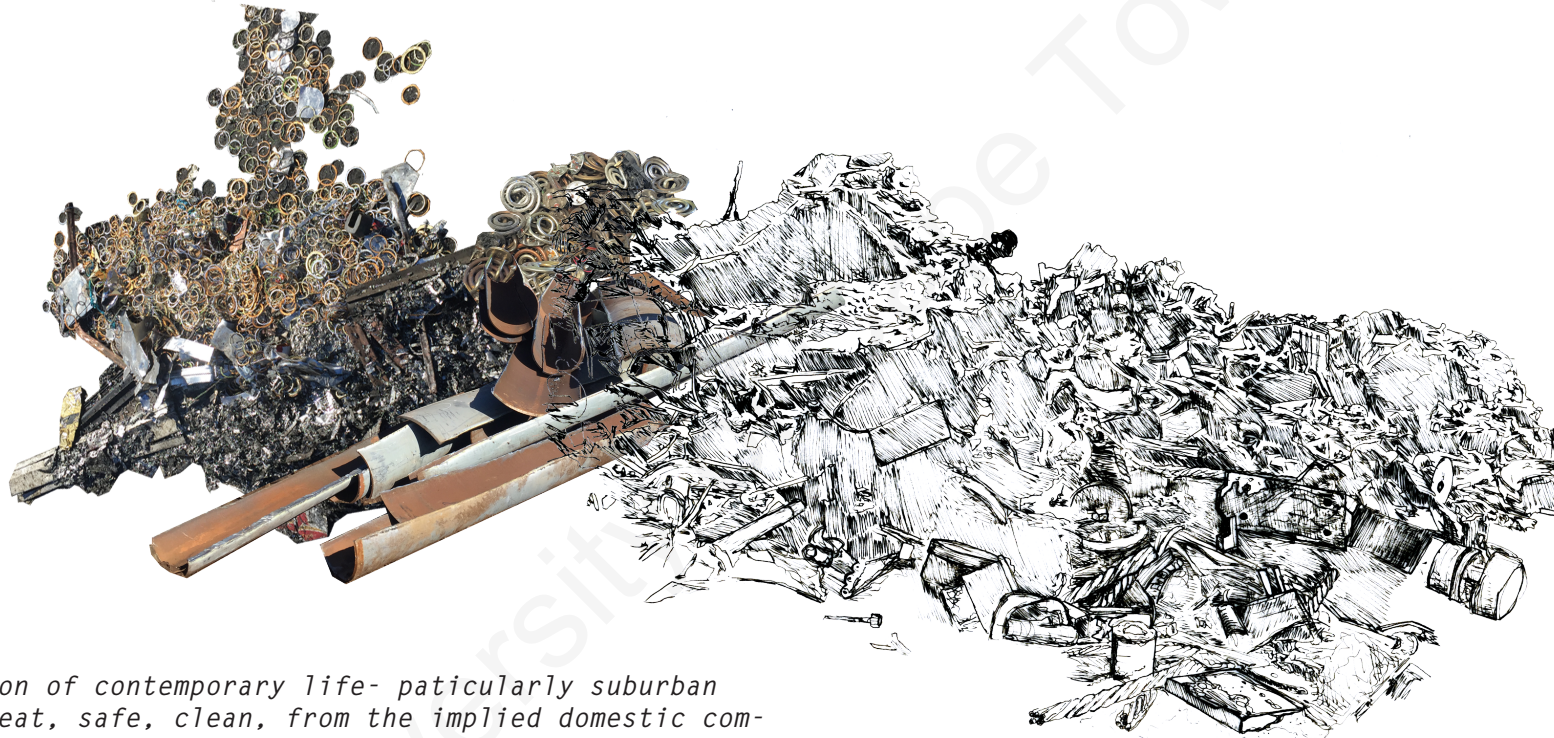


RETHINKING RUBBISH



“There is a vision of contemporary life- particularly suburban life- as being neat, safe, clean, from the implied domestic comfort of the world promised by the consumer product advertising to the calm, ordered and largely indistinguishable streets and homes constructed from factory produced components. Set against such a vision, however, garbage takes on a transforming power that undermines any supposedly reasonable expectations that the world persists in a state of harmony and order” - John Scanlan

JESSICA McCORMACK
2018

The copyright of this thesis vests in the author. No quotation from it or information derived from it is to be published without full acknowledgement of the source. The thesis is to be used for private study or non-commercial research purposes only.

Published by the University of Cape Town (UCT) in terms of the non-exclusive license granted to UCT by the author.

DECLARATION OF FREE LICENSE

I, Jessica McCormack, student number MCCJES004 hereby;

a) Grant the University free license to reproduce the above thesis in whole or in part, for the purpose of research.

b) Declare that;

1. The above thesis is my own unaided work, both in composition and execution, and that apart from the normal guidance of my supervisor, I have received no assistance apart from that stated below;

2. Except as stated below, neither the substance nor any part of the thesis has been submitted in the past, or is being, or is to be submitted for a degree in the university or any other University.

3. I am now presenting the thesis for examination for the Degree of Master of Landscape Architecture.”

PLAGIARISM DECLARATION

1. I know that plagiarism is wrong. Plagiarism is to use another’s work and pretend that it is one’s own.

2. I have used the Harvard convention [or insert appropriate] for citation and referencing. Each contribution to and quotation in this project from the work(s) of other people has been attributed and has been cited and referenced.

3. This project is my own work.

4. I have not allowed, and will not allow, anyone to copy my work with the intention of passing it off as his or her own work.

Signature:

Date: 30/11/2018

ACKNOWLEDGMENTS

I would like to thank my supervisor, Katie Ewing, for her patience and support, Clinton Hindes for ensuring his courses always ran efficiently, and Julian Raxworthy for revealing the beauty of Landscape Architecture in his courses and studios.

I would also like to thank Dianne and Nosi in the library for their guidance.

A huge thanks also to Joeseeph Meyer at the Woodstock Drop off Facility, who shared with me important information and insight into the workings of the site and whose enthusiasm about the project was inspiring

To Amy Gibbings and Justin Woods, who were extremely supportive and a reprise to the stresses of doing a dissertation, and to Graham Siebert, who was always willing to give advice.

I would also like to thank my classmates, from whom I learnt a great deal, and whose work I find inspiring. I look forward to what the future brings.

To Dr. Daphne Lyell, who has helped foster perspective and self-growth. I have gained a lot more than simply the completion of a dissertation through her consultation.

A massive thanks to my parents, for their love and support, and my sister, Camilla McCormack, who always leant a helping hand and listening ear.

CONTENT

- PROJECT SUMMARY
- STUDY
- DESIGN DISSERTATION
- ABSTRACT
- THE VITALITY OF MATTER AND RUBBISH THEORY
- THE TERRAIN VAGUE:LINKING
- SITE TO THEORY
- SITE PROGRAMME
- CATALYSING URBAN DECAY

PROJECT SUMMARY

This thesis is titled “rethinking rubbish”. We have shunned and ignored the vitality of the inanimate objects we consume and use everyday. A symptom of this is our desire to have any object defined as “rubbish” removed from our everyday existence to far-away landfill sites and recycling facilities. This contributes to societies unsustainable consumer behaviors and practices.

The Woodstock Drop off Facility is an appropriate site to address this, as it is the point where we become disconnected from the life-span of the things we use everyday as they are transferred to the next phase of their life-cycle. It is also surrounded by spaces which may be defined as “Terrain Vague”. Terrain Vague spaces are analagous to rubbish, as they expose the vitality of material through urban decay. These spaces are therefore shunned and perceived as external to the city, as is rubbish

Throught the provision of facilities which empower otherwise disenfranchised rubbish collectors and where rubbish can be used as a resource, as well as the initiation of urban decay using various material compositions, it is hoped that this redesign of the Woodstock Drop off Facility may help us rethink rubbish.

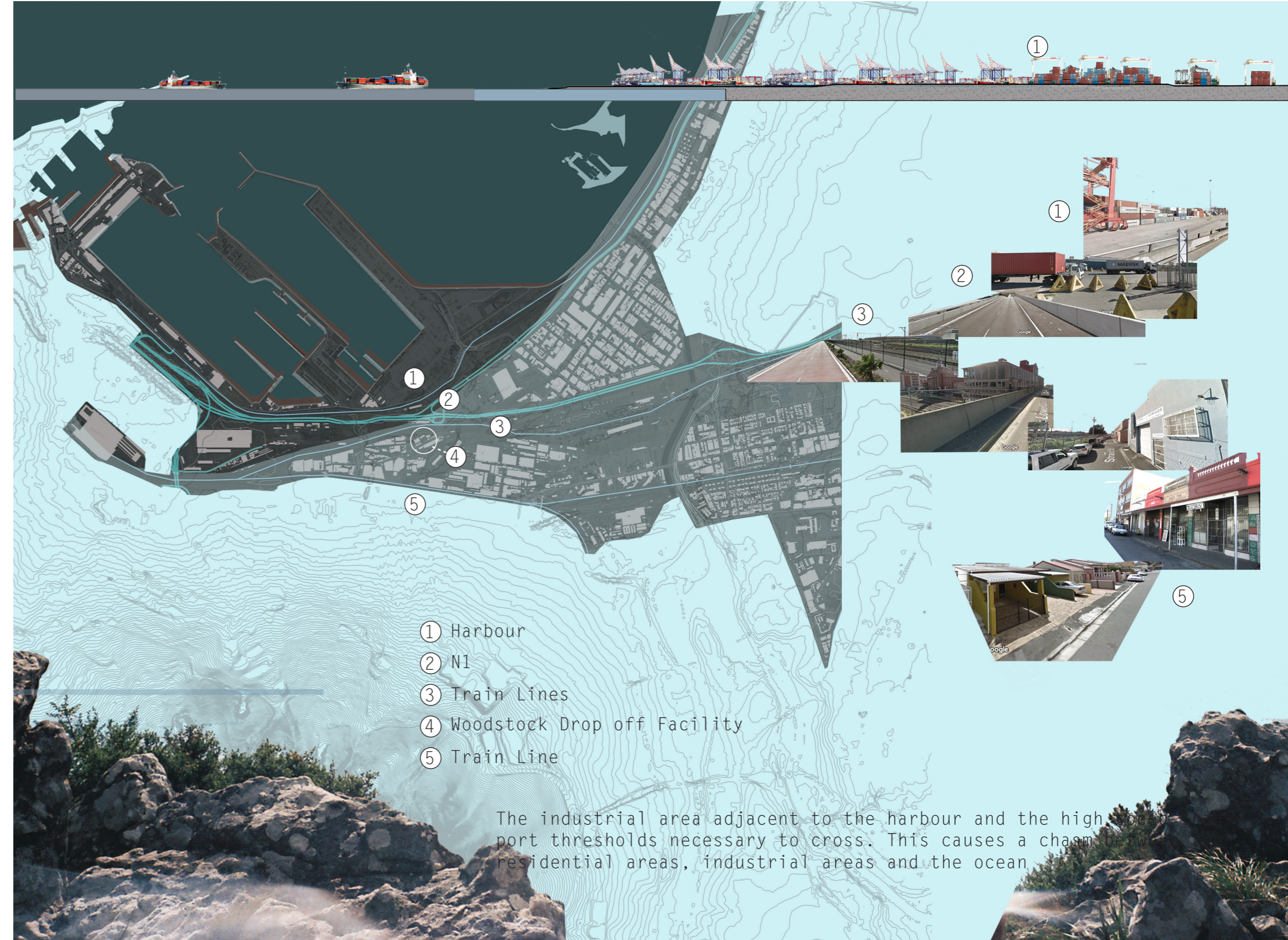
Landscapes of Sorting and Dispersal: Second Law Thinking at the Woodstock Drop off Facility

ABSTRACT: Industrial processes forms have dominated the landscape with their linear and degenerative processes. The imposition of these forms in the landscape is exemplified by the industrial area adjacent to the harbour in Cape Town, which was located on the coastline prior to the reclamation of the coastline between 1941 and 1962. These linear and degenerative industrial processes disregard the Second Law of Thermodynamics, which states that entropy of a system increases. This has resulted in unnecessary resource consumption, as well as a permeation of pollutants into the environment.

Regenerative design seeks to re-mediate this and reconnect us to nature. Recycling is an example of an attempt at regenerative design. The Woodstock Drop off Facility is a recycling drop off point where domestic and waste from small retailers and builders is brought before it is sorted and dispersed to various recycling plants and the Vissershoeck landfill. It is located in the industrial area and offers opportunity to connect users to material flows and processes, which are otherwise forgotten.

Stremke et al (2011) conclude that dispersal and mixing are two causes of increases in entropy. In order to gain an understanding of the potential role of the Woodstock Drop off Facility in more regenerative material flows, The Woodstock Drop off Facility is assessed with regards to dispersal and mixing.

The aim of this study is to assess the site's potentials in terms of reconnecting the user to material flows and natural systems, as well as an assessment of how regenerative recycling processes actually are. Sorting and Dispersal are the major functions of the Woodstock Drop off Facility. Stremke et al (2011) argue that as materials become more mixed and dispersed, they become more entropic. This study aims to evaluate this landscape of mixing and dispersal in terms of entropy and therefore assess the regenerative potentials of the site



- ① Harbour
- ② N1
- ③ Train Lines
- ④ Woodstock Drop off Facility
- ⑤ Train Line

The industrial area adjacent to the harbour and the high port thresholds necessary to cross. This causes a chasm between residential areas, industrial areas and the ocean.

②

③

④

④

⑤

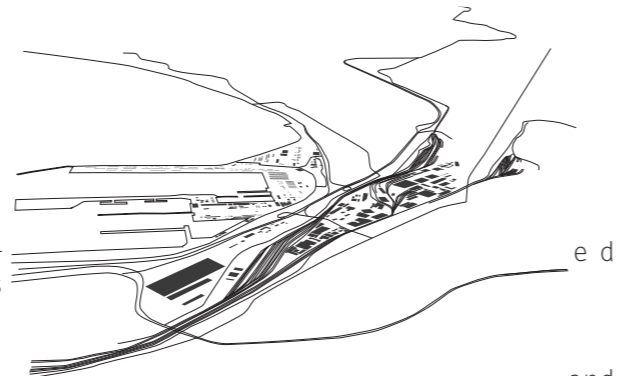
INTRODUCTION:

A chasm exists between humans and nature. This can be attributed to the rapid technological advancement, which characterizes the industrial period. John T Lyle (1994) argues that industrialization has replaced the diverse adaptations nature has evolved over the last few billion years with simple forms and processes which have consistent regularity throughout the landscape. Instead of the complex interweaving and interaction of cyclical flows through nature's ecosystems and other hierarchical organizations of life, industrial technologies have replaced these with easily manageable flows from source through to sink. These are known as degenerative processes (Lyle, 1994).

These degenerative processes operate without regard for the second law of thermodynamics (Lyle, 1994), which states that the entropy of a system increases over time. This has resulted in energy inefficiencies and unnecessary resource consumption, as well as a permeation of pollutants into the environment (Lyle, 1994). The disregard for entropy can be attributed to a complete separation of industrial processes from natural processes (Lyle, 1994). Life has organized itself from molecules into DNA, DNA into genes, genes into chromosomes, chromosomes into organisms until the eventual evolution of mutualisms and ecosystems. These increasingly complex life-forms have evolved in order to ensure cyclical flows of energy and resources, reducing the inputs and outputs of their systems.

There is a feedback between industrialization and the development of rapid transport flows; technologies aided the possibility of inventions such as the locomotive and other mechanized means of transport (Illich, 1973), while increasingly rapid and direct transport routes meant that industrial processes could be located conveniently distanced from residential areas (Lyle, 1994). This can be observed in Cape Town, where industrial areas are located in the Cape flats to the east of Table Mountain as well as in the Northern Suburbs. The nucleus of industrial activity is, however, in close proximity to Cape Town's CBD, perhaps due to its proximity to major transport systems; the harbour, various train lines, and the N1. These rapid transport routes dislocate the industrial processes from the citizens in adjacent residential areas due to their impermeability (for example, one of the only points of access from Woodstock to this industrial area is over the bridge on Lower Church Street), and their stark, monofunctional forms which create visual barriers to the areas beyond. From an aerial perspective the impositions of the forms of these transport routes and industrial buildings on the landscape, is obvious.

The most prominent example of industrial processes' imposition of form onto the landscape in Cape Town, is the coastal land reclamation of the foreshore, which was completed in 1940 (Ingpen, 2015). This was in order to make space for harbour operations to take place closer to deeper waters. By 1962, the harbour was extended to include Ben Schoeman Dock (Ingpen, 2015). This project entailed the reclamation of Woodstock Beach. This project was suggested in order to reduce the amount of "range action" (Stewart, 1935), which is a result of the reflection of the predominantly South-Westerly swell direction off the Woodstock beach, back into the harbour, which results damaging movement by boats, despite being docked.



e d

and In-



1916



1938



1941



1962

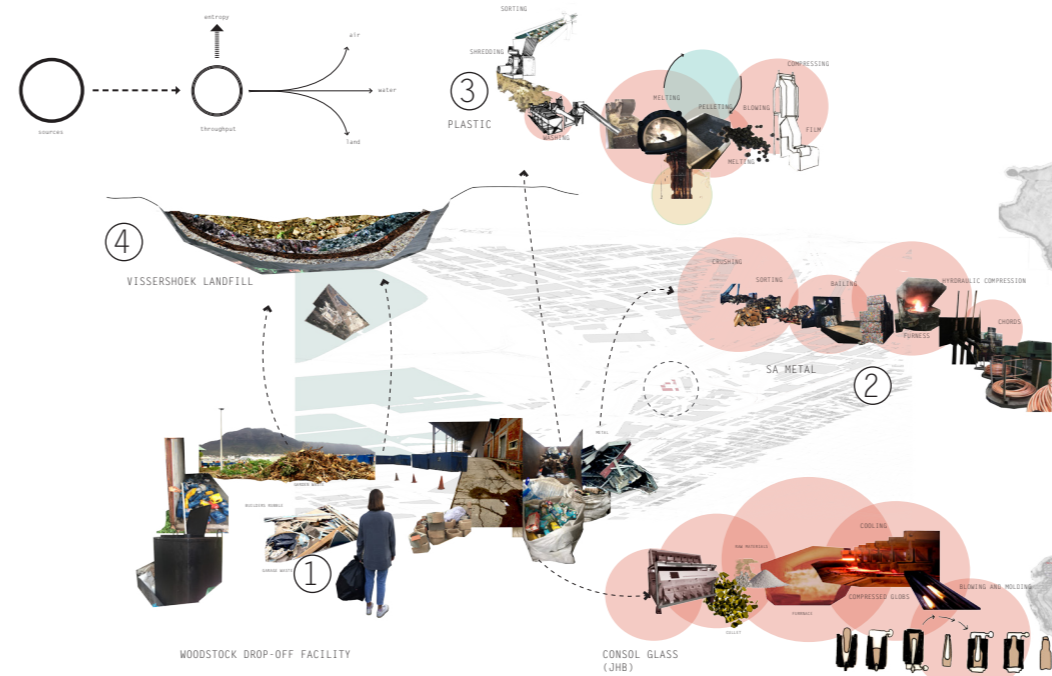
THE SITE

Rapid transport has enabled the disconnect between material flows. Waste is transported to the relative outskirts of the city, while manufactured and processed goods flow into the city via these transport routes. The goods and materials we come into contact with every day, which have become so necessary in our every day lives, have histories and futures which are more significant than time period we are in contact with them (Lyle, 1994). Unsustainable consumer habits can largely be attributed to that lack of understanding of the relationships between materials and processes (Berry, 1997).

Degenerative flows commonly flow from source to sink, disconnected to the otherwise cyclical flows found in nature. Technologies which, conversely to degenerative flows, harness and pay attention to these flows are called Regenerative (Lyle, 1994). Where processes increasingly have a reduction in inputs and outputs, relying on resources which flow cyclically (Lyle, 1994). One such regenerative technology is recycling.

Woodstock Drop off Facility was identified as a site appropriate to address the disconnect between people and materials and processes, and people and nature. It forms part of the recycling network of the City of Cape Town, and is an opportunity within this recycling network to reconnect people to material processes.

It also directly speaks to the disconnect of industrial processes from nature. Being located in the industrial area within Woodstock where the coastline historically was, on Beach Road, prior to land reclamation,



DESIGN DISSERTATION: RETHINKING RUBBISH

We have shunned and ignored the vitality of the inanimate objects we consume and use everyday. A symptom of this is our desire to have any object defined as “rubbish” removed from our everyday existence to far-away landfill sites and recycling facilities. This contributes to societies unsustainable consumer behaviors and practices.

The Woodstock Drop off Facility is an appropriate site to address this, as it is the point where we become disconnected from the life-span of the things we use everyday as they are transferred to the next phase of their life-cycle. It is also surrounded by spaces which may be defined as “Terrain Vague”. Terrain Vague spaces are analogous to rubbish, as they expose the vitality of material through urban decay. These spaces are therefore shunned and perceived as external to the city, as is rubbish

Through the provision of facilities which empower otherwise disenfranchised rubbish collectors and where rubbish can be used as a resource, as well as the initiation of urban decay using various material compositions, it is hoped that this redesign of the Woodstock Drop off Facility may help us rethink rubbish.

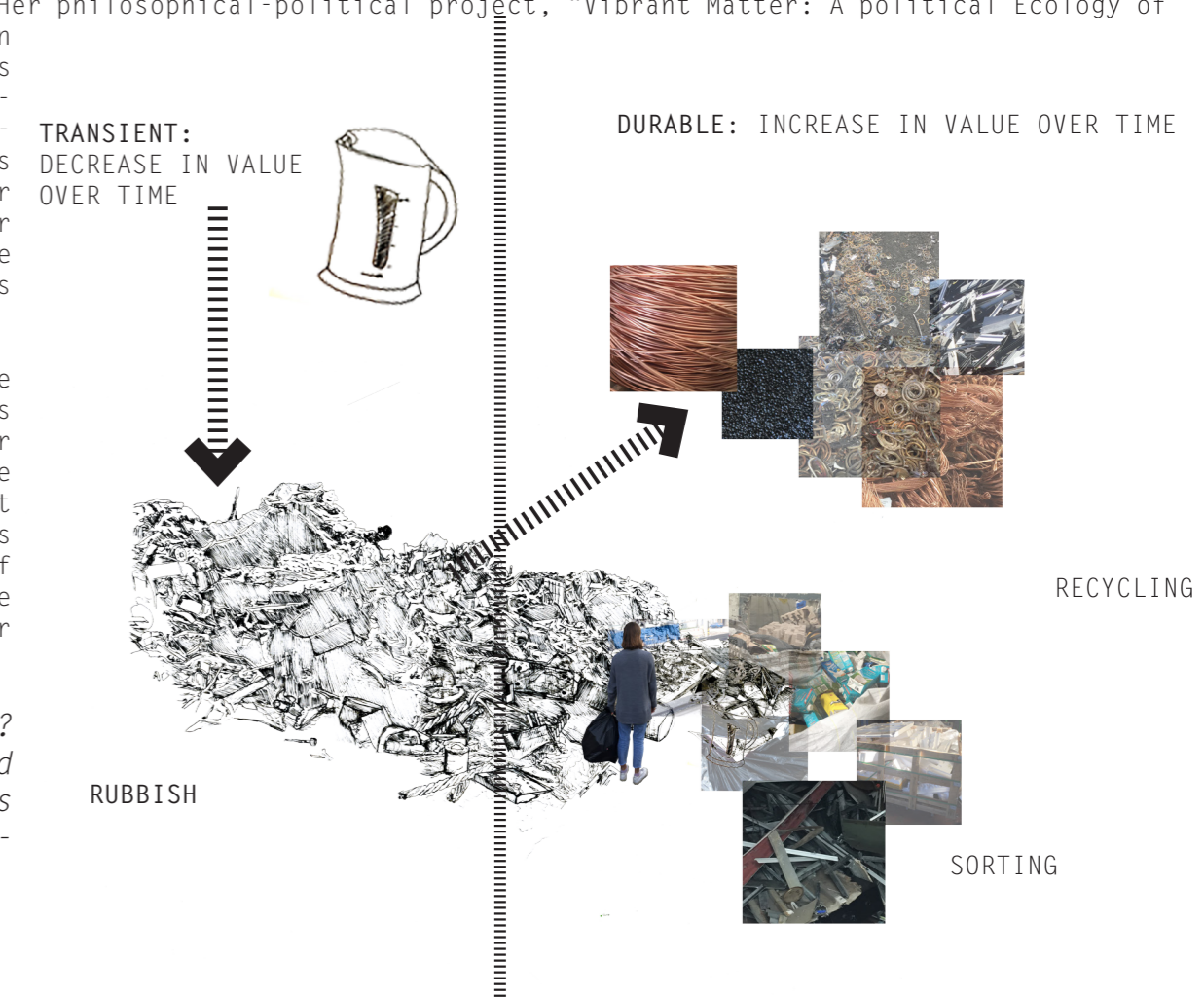
RUBBISH THEORY AND THE VITALITY OF MATTER

This chapter deals with perceptions of certain objects, categorized as rubbish, and how the systems put in place have perpetuated these perceptions, and therefore unsustainable consumption behaviors. Jane Bennett (2010) argues that the vitality of matter has been ignored in our interactions with every day, inanimate things. The implications of this will be examined in terms of Michael Thompson’s rubbish theory. The theory of Bennett and Thompson will then be discussed in the context of the City of Cape Town’s Drop off Facility network. Conclusions are then discussed in terms of implications for design.

Political Theorist, Jane Bennet (2010) aims to encourage “intelligent and sustainable engagements with vibrant matter and lively things”. She believes that a re-conception of matter would help diminish the myriad of social and environmental issues, which have arisen due to irresponsible consumer behavior. Her philosophical-political project, “Vibrant Matter: A political Ecology of Things” origins include the work of Henri Bergson. In his book, Creative Evolution (1907), Bergson argues that humans have developed intelligence as an instrument of knowledge, specifically to master inert matter. This has resulted in a negligence of the powers of intuition, which Bergson argues we must endeavor to recover. Only with intuition are we able to uncover the qualities of life in animate entities, and in the frame of Bennett’s argument (and the argument of this design dissertation) in inanimate entities as well.

Bennett (2010) refers to the vitality of matter the capacity of things to act as “quasi agents or forces with trajectories, propensities or tendencies of their own”. When we begin to think of matter in this way, we think not of commodities, resources or rubbish, but rather as actants (Bennet, 2010). This disintegrates our perceived power over resources. A recognition of the vitality of matter allows us to recognize the range of nonvhuman material powers, which may “aid or destroy, enrich or disable, ennoble or degrade us”.

“Why advocate for the vitality of matter? Because my hunch is that the image of dead or thoroughly instrumentalized matter feeds human hubris and our earth destroying fantasies of conquest and consumption”



TERRAIN VAGUE: LINKING SITE TO THEORY

The systems of rubbish flows from source, through to consumption, and eventually to sink, blind us to the vital powers of matter, by design. Bennett (2010) refers to the quality of otherwise categorized inanimate objects to “exceed their status as objects” as things with independence and aliveness, as “thing-power”. We have become avert to “thing-power” a telling example is the systems put into place in the management of rubbish. The vitality of matter is evident in its decay. We have managed to abolish the decaying notion of time from our consciousnesses through waste disposal systems (Scanlan, 2005).

Waste disposal systems were implemented as necessity in the form of improvisational and ad hoc measures and solutions (Scanlan, 2005). However, society was able to industrialize these processes.

Large industrial recycling, waste processing, and landfill facilities have been placed in the outskirts of cities, in industrial areas. We have, as a result become physically removed from the “thing-power” of the everyday objects we come into contact with every day. The City of Cape Town has a network of Drop off Facilities. These function as the dispersal point, where recyclable goods, including glass, metal, paper, plastic, cardboard, oil, garden refuse, builders rubble and garden refuse are dropped off by building contractors, gardening services and landscaping contractors and every day people. These goods are then transferred to various recycling facilities in and out of the city or to the Vissershoeek landfill. We are removed from the thing power which is revealed in the process of recycling through sorting and processing of materials, while at landfill sites thing-power is suppressed through what Scanlan (2005) refers to as “mummification”, where the disintegration and decay of materials are prevented through the use of plastic liners, which prevent the leaching of decayed material into the ground.

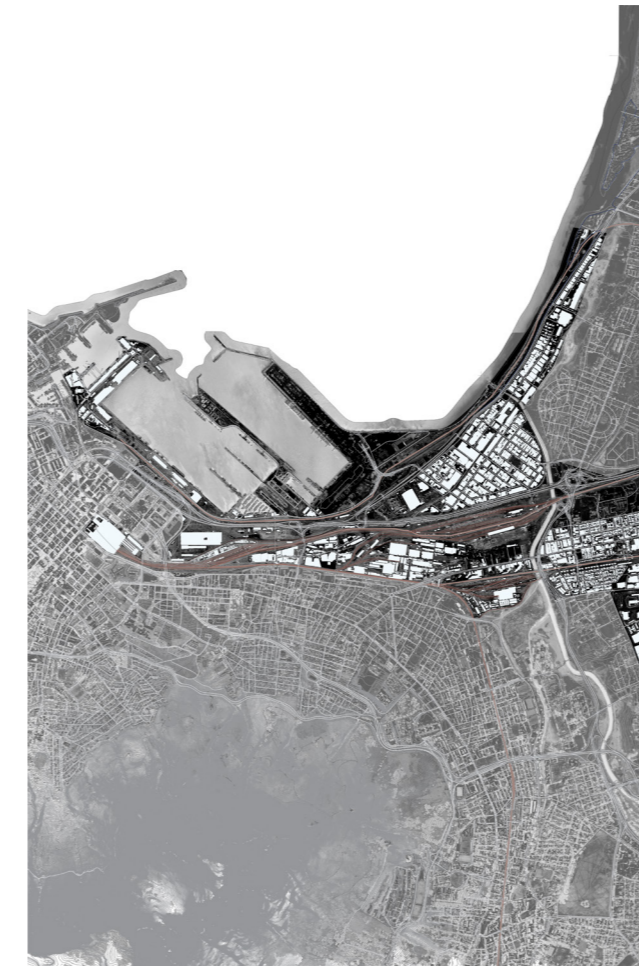
These intensive systems, require stringent separation and categorization of objects as rubbish. Michael Thompson’s Rubbish Theory theorizes that society has categorized objects as transient; objects which decrease in value over time, and durable; objects which increase in value over time. Objects which are neither transient or durable are categorized as rubbish. A durable object can become transient. Transient objects cannot become durable. Only until they reach the rubbish category, can they become durable. These categories are endowed by society. As transient objects start showing the decaying nature of time, the vitality of matter, they descend into the rubbish category. The fear of “thing-power” has resulted disciplinary policing of these boundaries to allow for the easy removal of these affects (?) from our consciousness.

These boundaries may be disciplinarily policed. However, they remain incredibly feeble. Jeremy Till (2009) notes from a talk he attended, where the speaker pointed out that architecture is in fact waste in transit. In landscape architecture, this has the potential to be exposed and explored, with the interaction of the built form with natural processes.

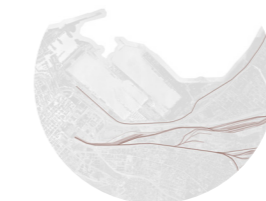
Construction and demolition waste (referred to as builders rubble) is the major waste moving through the Woodstock Drop off Facility. Most of this material moves to the Vissershoeek landfill. In the City of Cape Town, 22 % of waste that is landfilled is builders rubble (CoCT, 2014). The aim of this design dissertation is to blur the feeble categorization of waste by using materials that are deemed construction and demolition waste in the creation of elements which expose Bennett’s “thing-power” through catalyzing varying degrees of contingency through the use and composition of different materials.

For the purposes of this dissertation, the Terrain Vague is a useful lens grounding rubbish theory and vital materialism to the context of the Woodstock Drop off Facility. De Sola Morales-Rubio (1994) defines the Terrain Vague as empty and abandoned space. Just as we cast away things which begin to show signs of “thing-power”, in their decay and disintegration, to the outskirts of the city via our rubbish systems, these spaces have come to “exist outside of the city’s effective circuits and productive structures” (De Sola Morales Rubio (1994). these spaces become perceived as such due to their vague quality. De Sola Morales-Rubio (1994) justifies his use of the term “vague”, alluding to the German definition of the word, which refers to “movement, oscillation, instability and fluctuation”. These spaces begin to possess the very vitality, which we have become blind to in our fascination with the geometric layout of the built form of the great infrastructures (De Sola Morales- Rubio, 1994).

We have become blinded to these spaces because of modern and industrial fetishisation of the built object (rather than the latent thing) and therefore it is these very things which have created these Terrain Vague spaces. Terrain Vague spaces often are characteristic of industrial areas, with their low building footprint and high speed transport systems, in the form of railways and highways, which feed these industrial areas



LOW DENSITY BUILDING FOOTPRINT

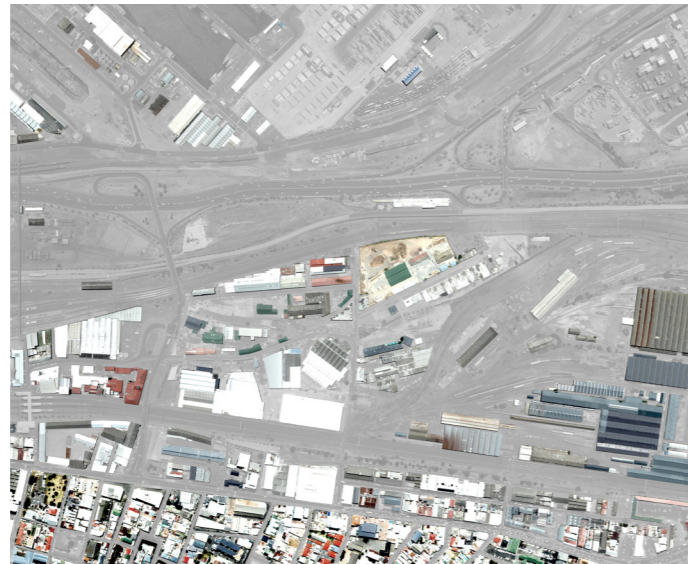


RAILWAYS



HIGHWAYS AND BOULEVARDS





THE TERRAIN VAGUE AND THE VITALITY OF THE URBAN FORM

The crumbling asphalt, the rusted exposed concrete re-enforcement, the colonisation of the resultant cracks by plants and other organisms, represent the vitality of matter in the urban forms of the Terrain Vague. It is these processes which are evidence of the flux and flows of decay and degeneration in these spaces, and give appropriateness to De Sola Morales Rubio's (1994) assertion of these spaces as "Vague".

The cycle of decay and degeneration animates the vitality of materials and is the very example of "thing-power" we have removed ourselves from through the systems of rubbish. When things are subject to decay, the vitality of the animate interacts with the vitality of the inanimate, blurring the boundary between the animate and the inanimate.

The Woodstock Drop off Facility is situated in the Harbour Industrial Area, which stretches on the reclaimed land from the Cape Town Station to the Salt River. The portion of the industrial area located in Woodstock has history, making these Terrain Vague spaces prevalent in the area. Originally a fishing hamlet, Woodstock evolved into an industrial hub, as railway lines were built in the 1860s (DAG, 2018). Woodstock Beach was eventually destroyed for the reclamation of land at the coastline, for the creation of the foreshore. This marked the peak of the industrial area around the middle of the 20th century (DAG, 2018). The area was dominated by the textile industry, which took a hit as South Africa transitioned to a more open economy, resulting in international competition with which the local industry failed to compete (DAG, 2018). As a result, many residents and business owners vacated buildings, while still retaining ownership, resulting in many vacant and abandoned lots. While gentrification has taken hold of many of these spaces, a recognition of the latent forces within Terrain Vague spaces through design may act as an opposing notion to the gentrification of Woodstock, which has resulted in the economic exclusion of residents in Woodstock (DAG, 2018).

The Woodstock Drop off Facility is surrounded by spaces which may be constituted "Terrain Vague". These Terrain Vague spaces are a result of the surrounding high-speed transport network, which is comprised of the N1, Lower Church Road and the My City Bus Lane. All of these roads are raised at some point or are surrounded by road reserve, creating formally unoccupied, Terrain Vague spaces. The N1 is the main road where materials are carried out of the Woodstock Drop off Facility, to their various destination points. Ironically, it is the very forms which are responsible for our disconnect to the "thing-power" of our every day objects, which create these Terrain Vague spaces which reflect our societies' insecurities, as spaces left undominated by architecture, available to the "movement, oscillation, instability and fluctuation" that vagueness brings.

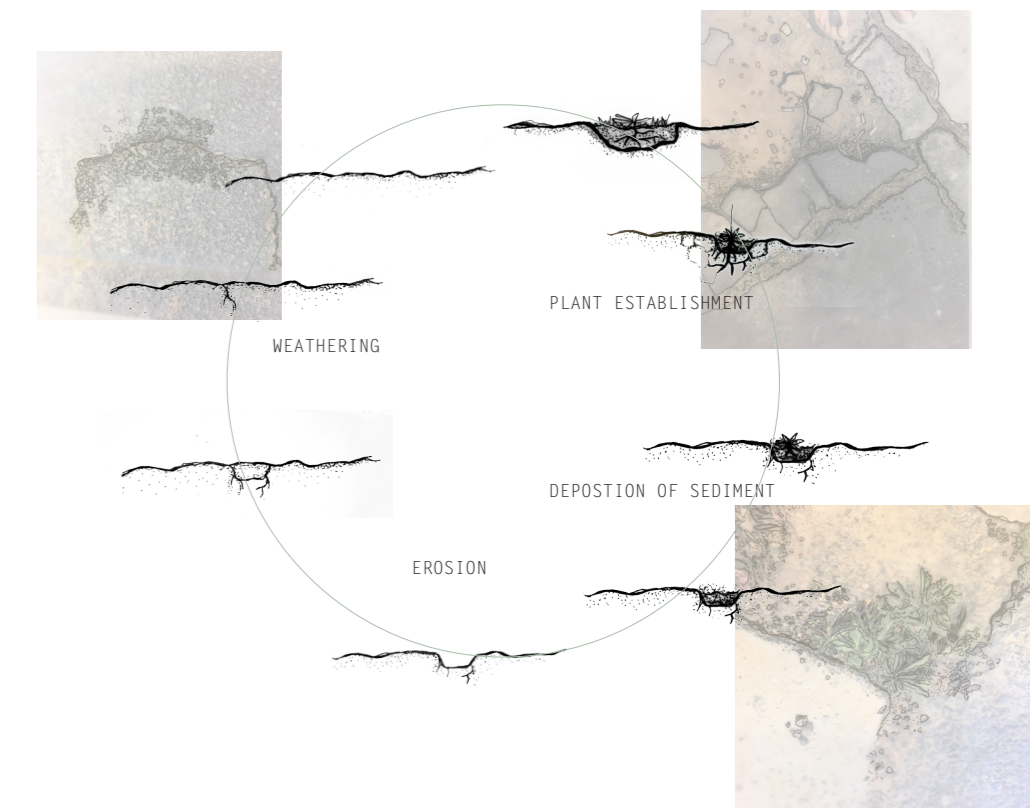
The aim of the design intervention is to vitalise matter by designing an extension of the surrounding Terrain Vague spaces, spaces which expose our insecurities towards "thing-power". in the very site which perpetuates our aversion to it.

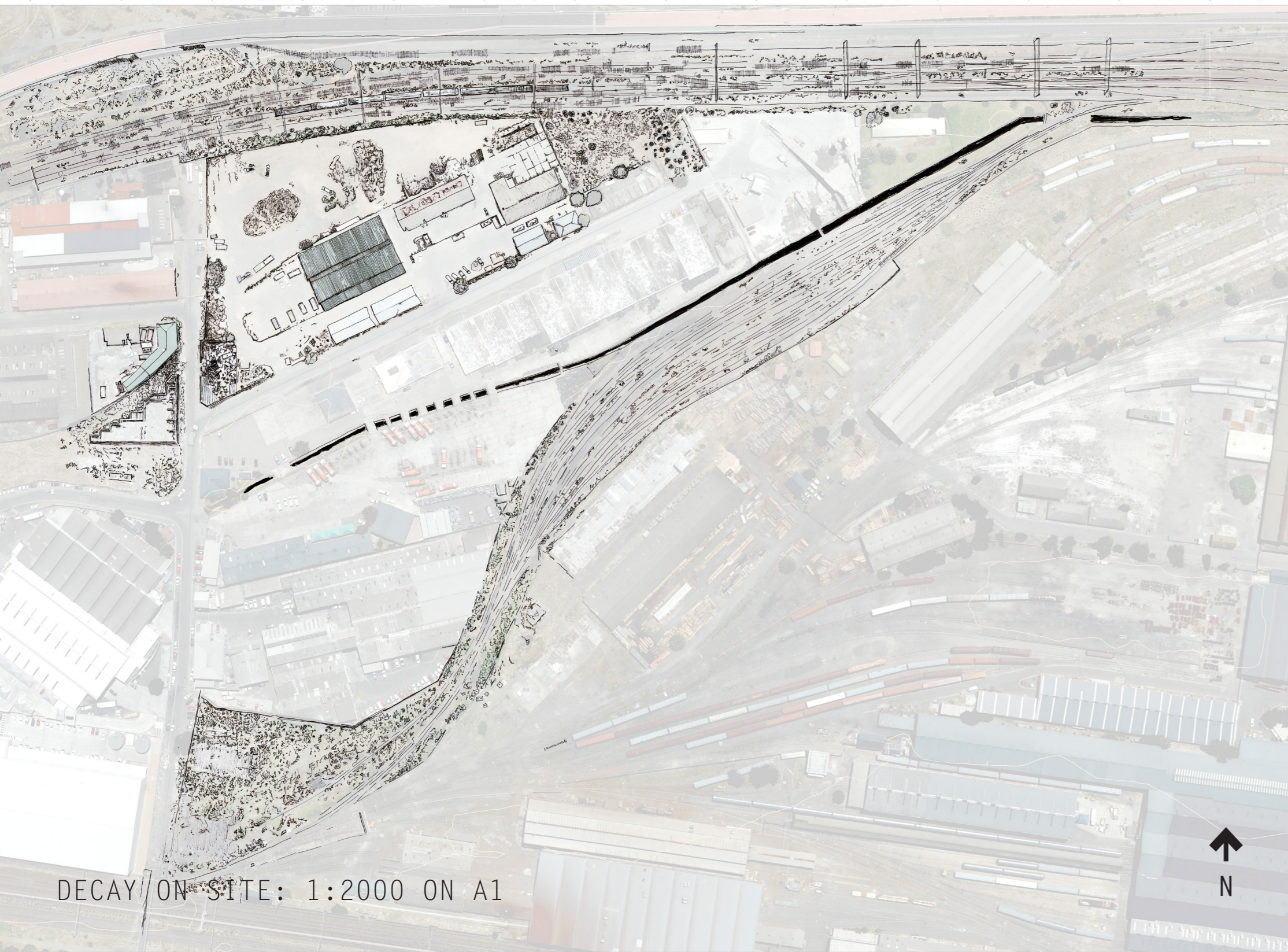
A brief photographic study of the decay of the urban form reveals that these forms undergo the natural cycle of weathering, erosion and deposition of sediment. Plants colonise where sediment has accumulated in eroded cracks, creating micro-climates and pockets of growing medium and water retention.

This design dissertation aims to vitalise the "thing-power" exposed through urban decay. According to a program determined for the Woodstock Drop off Facility, varying degrees of urban decay are catalysed through varying use and composition of materials.

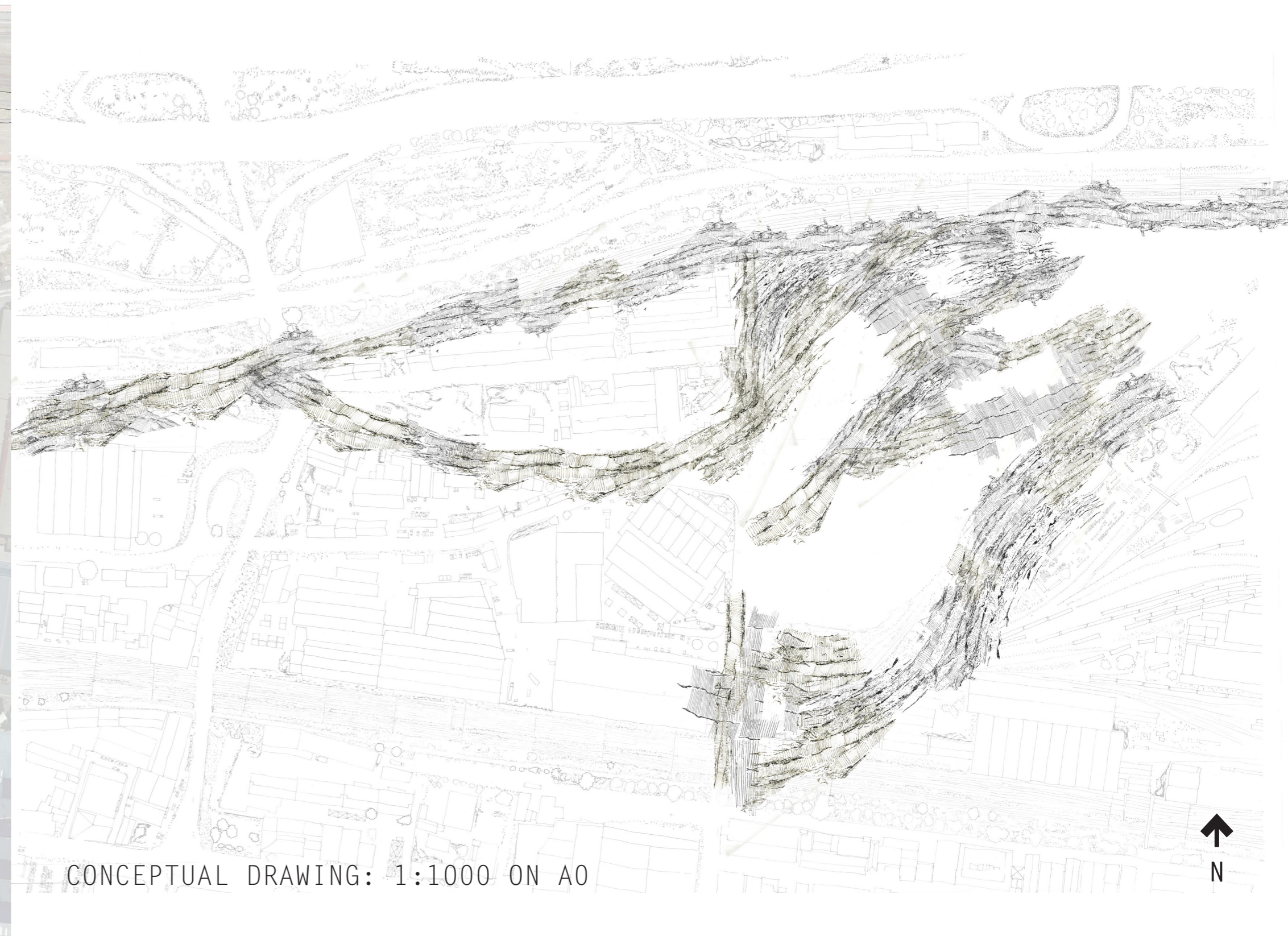
In doing so, the proposed design hopes to, following De Sola Morales Rubio's (1994) suggestion for dealing with the Terrain Vague, bring continuity of the forces "established by the passing of time and the loss of limits", namely, degeneration and decay.

The drawing on the adjacent page represents the continuity of the forms of the Terrain Vague through the Woodstock Drop off Facility and how they will be manifested allowing for varying degrees of decay and degeneration.





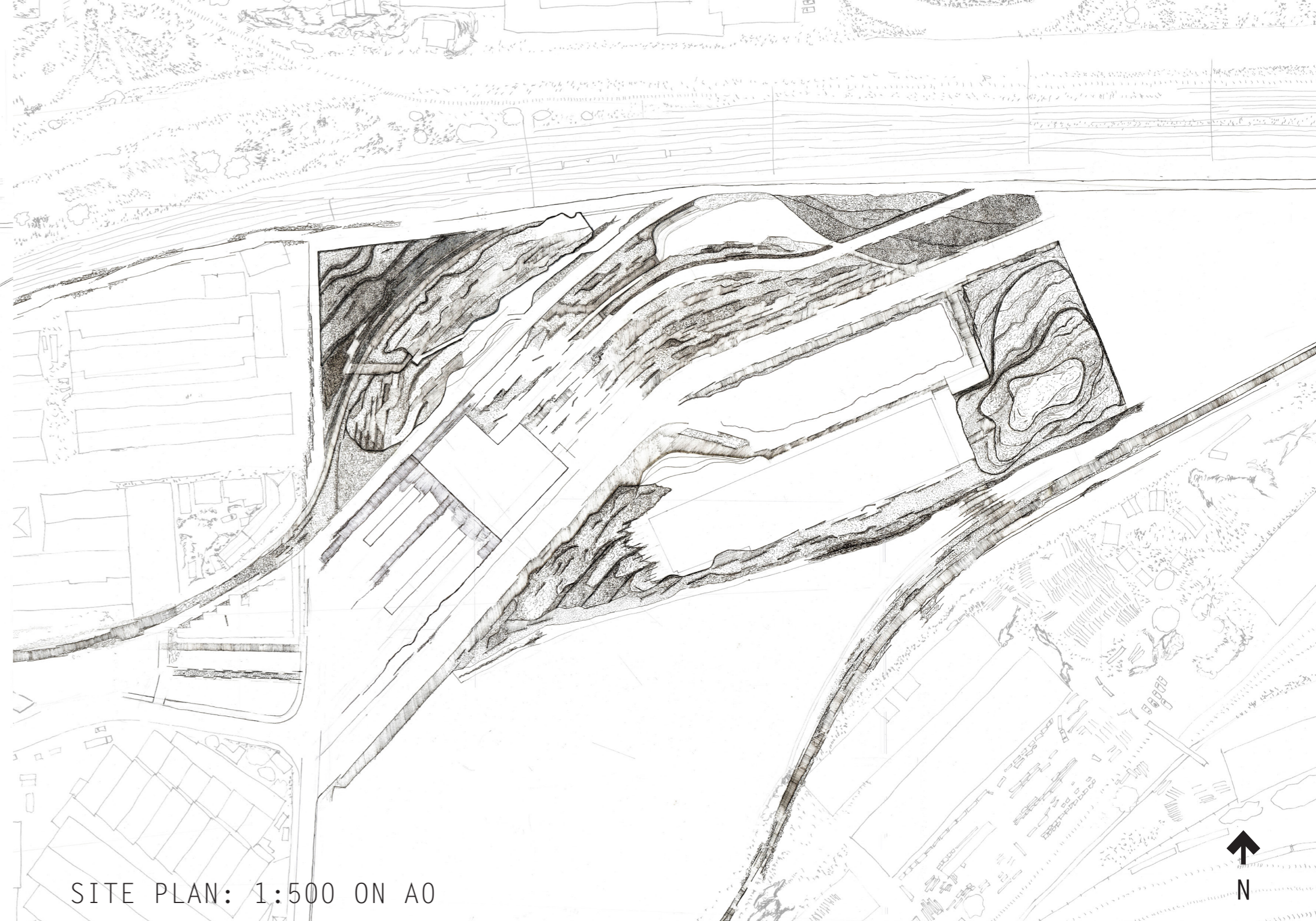
DECAY ON SITE: 1:2000 ON A1



CONCEPTUAL DRAWING: 1:1000 ON A0



SITE PLAN: 1:1000 ON A0



SITE PLAN: 1:500 ON A0

SITE PROGRAM

The aim of this design dissertation is to challenge societies categorization of things as rubbish and thereby the resistance of society towards “thing-power”. Following Michael Thompson’s rubbish theory, the facilities provided by this design allow for the transfer of rubbish into the durable, or eventually the transient category. The Drop off Facility has a workshop space adjacent to it, where people are able to experiment with materials, such as plastic, cardboard, metal, glass, paper, builders rubble and garden waste, to make various things, or to experiment with various building materials. The community garden uses material moving through the garden refuse drop off facility to provide mulch and nutrients. The Woodstock Drop off Facility is then transformed from a space where materials are dropped off and dispersed, to a space where these materials are re-vitalised and reconcieved as a resource, rather than waste.

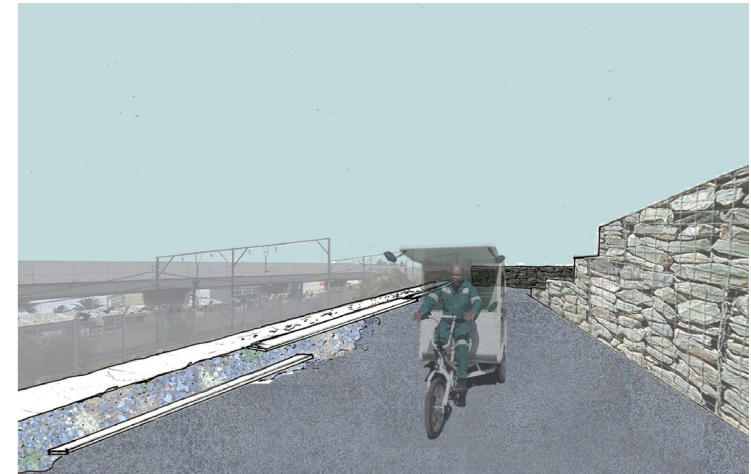
THE MICRO-SCALE COLLECTOR

The focus of this design dissertation is the micro-scale collector. Micro-scale collectors are defined by Dyssel and Langehoven, (2007) as “any individual, usually unemployed and homeless, who collect waste with the help of a trolley or bag”. These individuals collect directly from factories and businesses or household waste and landfills (Dyssel and Langehoven, 2007). Materials collected by micro-scale collectors are sold to buy-back centers, usually for a considerably smaller price than bought by recycling companies (Dyssel and Langehoven, 2007). Micro-scale collectors frequent the area around the drop off facility, However, are excluded from it, as Averda Waste Management is contracted by the city to transfer the waste at the drop off facility. A buy-back center situated in the corner of the site is where micro-scale collectors sell collected materials, However, this site is threatened to be shut down as these individuals are viewed by management at the Woodstock Drop off Facility as problematic. This is representative of perceptions of micro-scale collectors by themselves and others as societal outcasts, despite their importance within waste management flows (Dyssel and Langehoven, 2007). The facilities provided are designed to provide oppourtunity to micro-scale collectors and uplift the perceived contribution of these individuals as rubbish is prompted to be rethought through this design.



PEDESTRIAN PATHWAYS

Micro-scale collectors collect and carry recycled materials by foot (Dyssel and Langehoven, 2007). The proposed design therefore serves as a continuation of pedestrian routes which are currently active around the site. Micro-scale collectors access the buy-back center at the corner of the site over the bridge on Railway street. The abandoned railway adjacent to the site is currently appropriated as pedestrian thoroughfare, providing access to the railway to the north of the site, which is currently utilized by pedestrians. A pedestrian pathway is introduced through the space between two abandoned buildings adjacent to the site, which are owned by PRASA, but have been left vacant. The space between these two buildings were occupied by a railway, which extended onto what is currently the Woodstock Drop off Facility. This proposed pedestrian pathway will extend from the Esplanade and Woodstock Train stations, running adjacent to the proposed drop off facility and workshop, through to the pathway adjacent to the railway to the North of the site.



1. Proposed pedestrian access through old railway to Woodstock and Esplanade train station
2. Bridge on railway street provides direct access to the facility
3. Pedestrians use abandoned railway adjacent to the drop off facility
4. Pedestrian usage on railway adjacent to the drop off facility

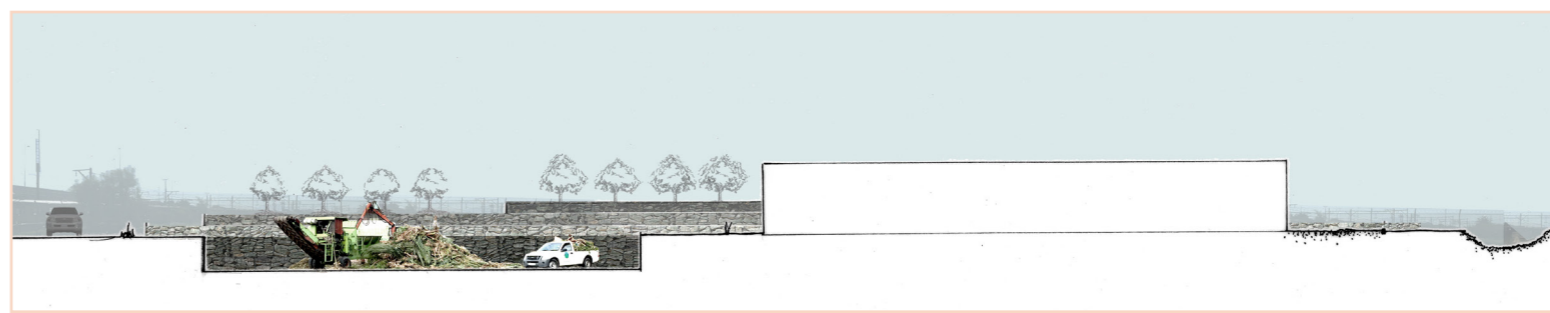
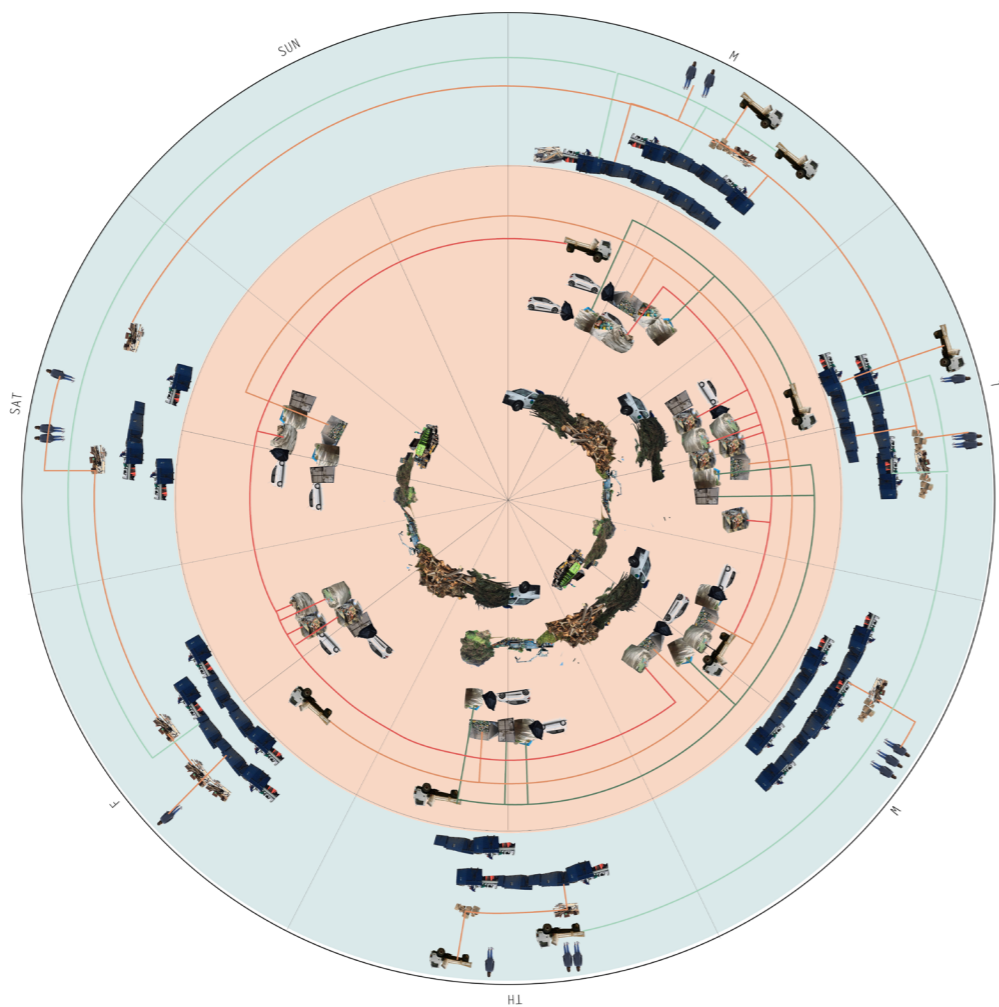




DROP OFF FACILITIES

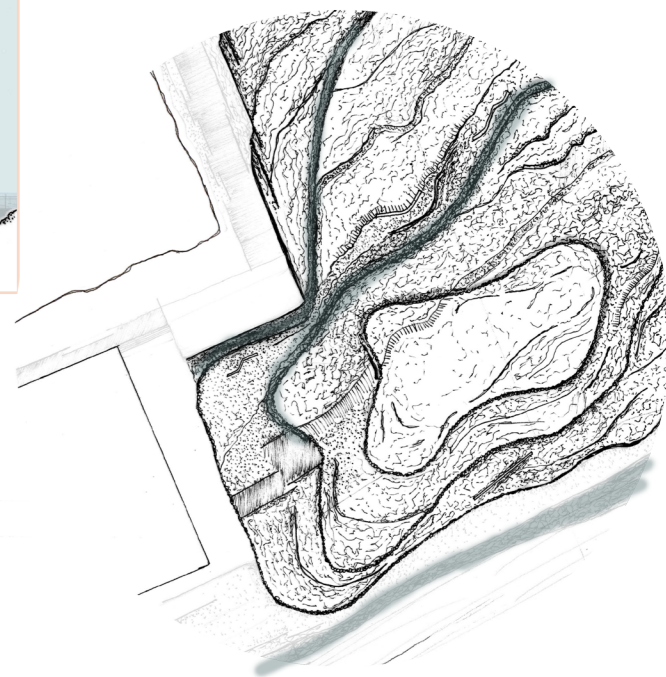
The first time I took my recycling to the Woodstock Drop off Facility, I was struck by how disconnected the process was, when my bag of recycling was taken from my hands into one of the warehouses where sorting takes place. Instead of being hidden in warehouses, the scheme introduces a drop off facility which is placed in depressions in the ground, which are about 2m deep, so that visitors of the Drop off Facility can witness the process of things being sorted, and the movement of things in and out of the Drop off Facility. This design hopes that users will no longer be disconnected from what happens to their waste after they drop it off.

The Drop off Facility is placed along the major pedestrian pathways described above, enabling easier access to the micro-scale collectors transferring waste by foot. Therefore general recycling products, such as paper, cardboard, plastic, glass and metal are dropped off in a demarcated area adjacent to the introduced major pedestrian pathway, while builders rubble and garden refuse, which are mainly dropped off by building and landscaping contractors by car are placed adjacent to the proposed vehicular route running through the site and at the back of the site, adjacent to the community garden respectively.



COMMUNITY GARDEN

Adjacent to the garden refuse drop off is the community garden. This is based on permaculture practices. Water runoff from adjacent permeable pavers in the parking lot and walkway run into swales which run along each terrace. Tree crops are inter-planted with pollinator-attractive plants and legumes, encouraging nitrogen input into the soil. Chipped material from the garden refuse is placed around the garden as mulch and left to degrade to improve soil quality



BIKE DEPOT

Located next to the bridge, which is used by pedestrians taking materials to the buy-back center, the bike depot provides another opportunity and formalises micro-scale collection. Trolleys can be eventually replaced by bikes. Micro-scale collectors currently use the bicycle lanes in Woodstock for pushing goods on trolleys. Safer navigation may be

achieved with bicycles



CATALYSING URBAN DECAY

“movement, oscillation, instability and fluctuation” these are the qualities which give appropriateness to the use of the word “Vague” in the Terrain Vague. These spaces, left undominated by architecture represent our insecurities. Part of this is due to the vitality of matter, which arises in these vacant spaces. Urban decay is evident in such spaces and it is in these moments that the vitality of the inanimate and the animate merge. This design aims to expose these moments, through the use of kerbs, low walls and surface treatments, which use varying materials and compositions to catalyse varying degrees of urban decay. The amount of contingency allowed in these urban elements is determined by the program described previously.

ELEMENTS

KERBS

The function of a kerb is to prevent subsidence and crack formation at the edges (Zimmerman, 2009). Its very function qualifies it as an appropriate element for use in this design. Kerbs are constructed according to their needs in terms of loads by both vehicular and pedestrian traffic, and thereby the surfaces used in between the kerb.

LOW WALLS

Low walls are used in this design, analogously to kerbs but with the extra function of providing seating in spaces where a more gathering function is required.

SURFACE MATERIALS

Various surface materials are used according to the traffic type and intensity. Aggregate is either bounded or left loose according to the function.

MATERIALS

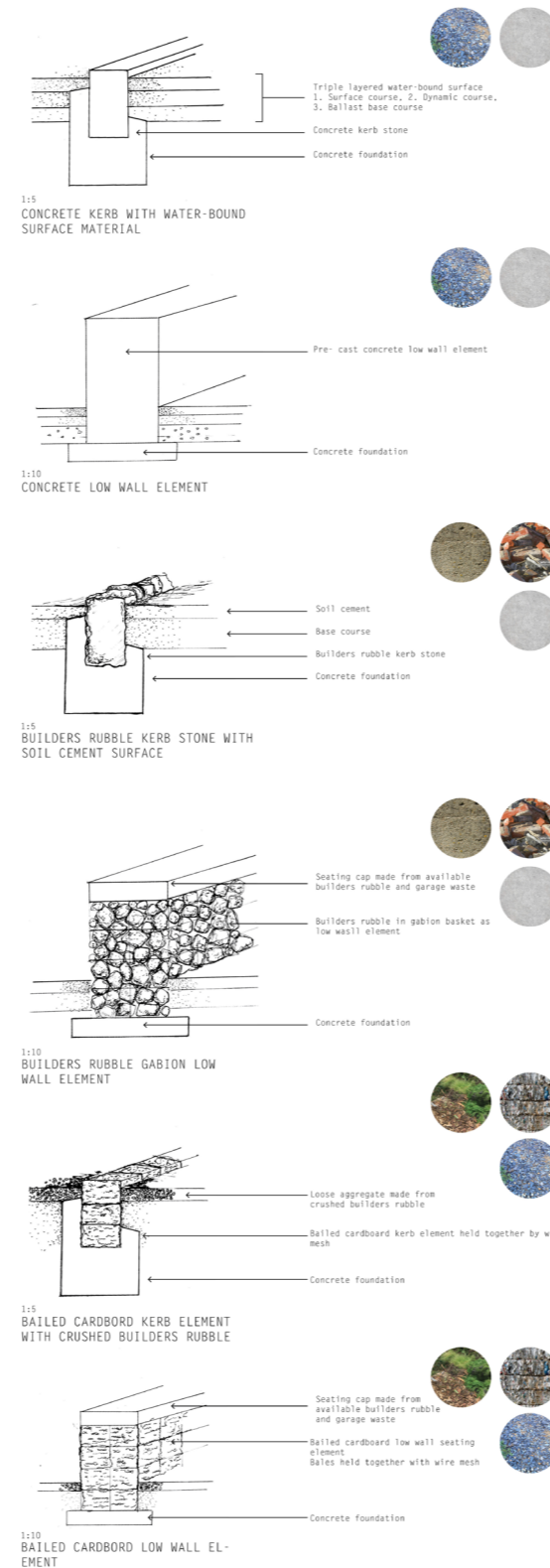
All the materials used in this design are recycled from the construction and demolition process of the current site and from builders rubble, cardboard, and chipped garden refuse, which all get dropped off at the Woodstock Drop off Facility. None of the materials are transformed (Hebel et al, 2014), to allow for a re-purpose and recycling when the proposed design runs its life-span

CONCRETE

Concrete is used in kerb stones, low walls and foundation blocks in kerb stones. The construction and demolition waste from the site is to be crushed and used as aggregate.

WATER-BOUND SURFACE MATERIAL

A triple-layered water bound surface material is used to prevent wear and tear from high surface loads and shear forces (Zimmerman, 2009). The rubble in the surface layer is also construction and demolition waste from the site and from builders rubble which moves through the site



SOIL CEMENT

Soil cement is to be used as a surface material. The soil is to be derived from the excavated material from the depressions where the drop off facilities are located.

BUILDERS RUBBLE

Appropriately sized builders rubble is used as kerbstones and in the gabion walls located around the site. Low gabion walls are used as seating elements.

BAILED CARDBOARD

Bailed cardboard is used as kerb stone and low wall elements. Cardboard can be bailed by a single person with hand-operated machinery. Wire mesh is used to hold the bailed material together.

LOOSE AGGREGATE

Construction and demolition waste is crushed and used as loose aggregate. The material is pre-sorted to prevent unwanted material, which may pose a safety threat.

CHIPPED GARDEN WASTE

Chipped garden waste is laid down as a surface material and as mulch in the community garden

COMPOSITION OF MATERIALS

Six typologies have been established responding to the facilities on site.

1 WALKWAYS AND GATHERING SPACES

These spaces are located on major pedestrian pathways and outside the workshop space. Pedestrian pathways are used primarily by individuals moving recycled goods by trolley or bicycle. Concrete kerbs and low walls are used with water-bound surface material.

2 WALKWAYS AND GATHERING SPACES

The pedestrian traffic in these spaces is not as heavy as in 1 walkways and gathering spaces. Kerb stones and low wall gabion seating elements are constructed using builders rubble. Soil cement and loose aggregate is used as the surface material. Kerbs are offset at some point and in others the surface material may not reach the edge of the kerb.

CATALYSING URBAN DECAY

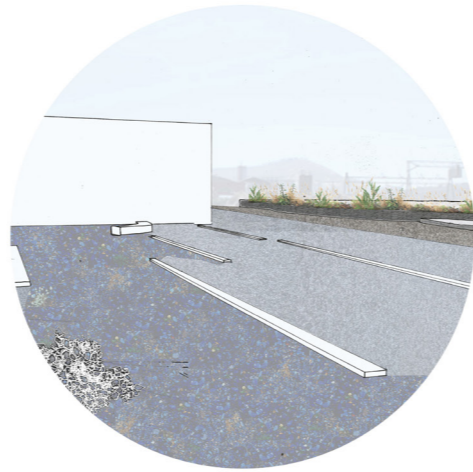
CONCEPT KEY	AXO DETAIL	CONCEPTUAL DETAIL PLAN	APPLICATION	KERB/LOW WALL	SURFACE MATERIALS
1' WALKWAY			MAJOR PEDESTRIAN ROUTE USAGE BY MICRO-SCALE COLLECTORS ICYCLES AND FOOT TRAFFIC	CONCRETE	TRIPPLE LAYERED WATER BOUND SURFACE
2' WALKWAY			SECONDARY PEDESTRIAN ROUTE LESS FREQUENT USE BY BICYCLES LOWER VOLUME OF FOOT TRAFFIC	BUILDERS RUBBLE CONCRETE	SOIL CEMENT CRUSHED LOOSE AGGREGATE (BUILDERS RUBBLE)
3' WALKWAY			TERTIARY PEDESTRIAN ROUTE LITTLE TO NO DISTINCTION BETWEEN PATHWAY AND GATHERING SPACE LOW DENSITY OF FOOT TRAFFIC	BAILED CARDBOARD BUILDERS RUBBLE GARDEN REFUSE	CRUSHED LOOSE AGGREGATE (BUILDERS RUBBLE) SOIL CEMENT CHIPPED GARDEN REFUSE
1' GATHERING			PRIMARY GATHERING SPACE OUTSIDE WORKSHOP/AMPHI-THEATRE/MARKET SPACE	CONCRETE	TRIPLE LAYERED WATER-BOUND SURFACE
2' GATHERING			SECONDARY GATHERING SPACES ADJACENT TO PRIMARY GATHERING SPACES AND WALKWAYS	BUILDERS RUBBLE CONCRETE	SOIL CEMENT CRUSHED LOOSE AGGREGATE (BUILDERS RUBBLE)
3' GATHERING			SECLUDED SPACES AWAY FROM FACILITIES	BAILED CARDBOARD BUILDERS RUBBLE GARDEN REFUSE	CRUSHED LOOSE AGGREGATE (BUILDERS RUBBLE) SOIL CEMENT CHIPPED GARDEN REFUSE

3 WALKWAY AND GATHERING SPACES

The walkway and gathering spaces are less distinguishable. Kerbs and low walls are constructed using bailed cardboard elements. The surface material is a more mixed composition of surface materials, including loose aggregate, chipped garden refuse and soil cement. The kerb is also offset in these areas.

CONCLUSION

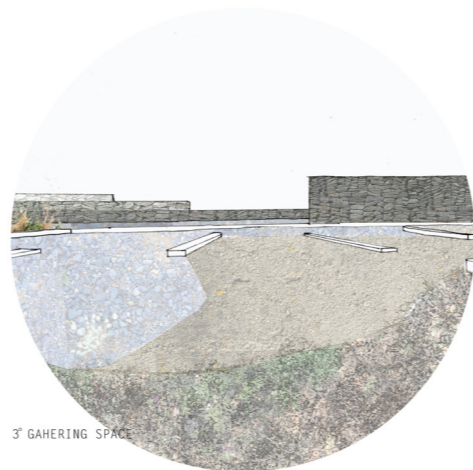
The this design hopes to expose the vitality of matter through the creation of moments where the vitality of the inanimate and the animate are merged through the process of urban decay. In juxtaposition to the removed material life-cycle through rubbish systems, materials are left to decay and morph on site. In combination with the provision of facilities which empower micro-scale collectors, and allow for rubbish to be used as a resource. It is hoped that this design of the Woodstock Drop off Facility initiates us to rethink rubbish.



1st GATHERING SPACE



2nd WALKWAY



3rd GATHERING SPACE

LIFE CYCLE OF A DETAIL

CONSTRUCTION AND DEMOTION WASTE (FROM DEMOLISHED SITE)

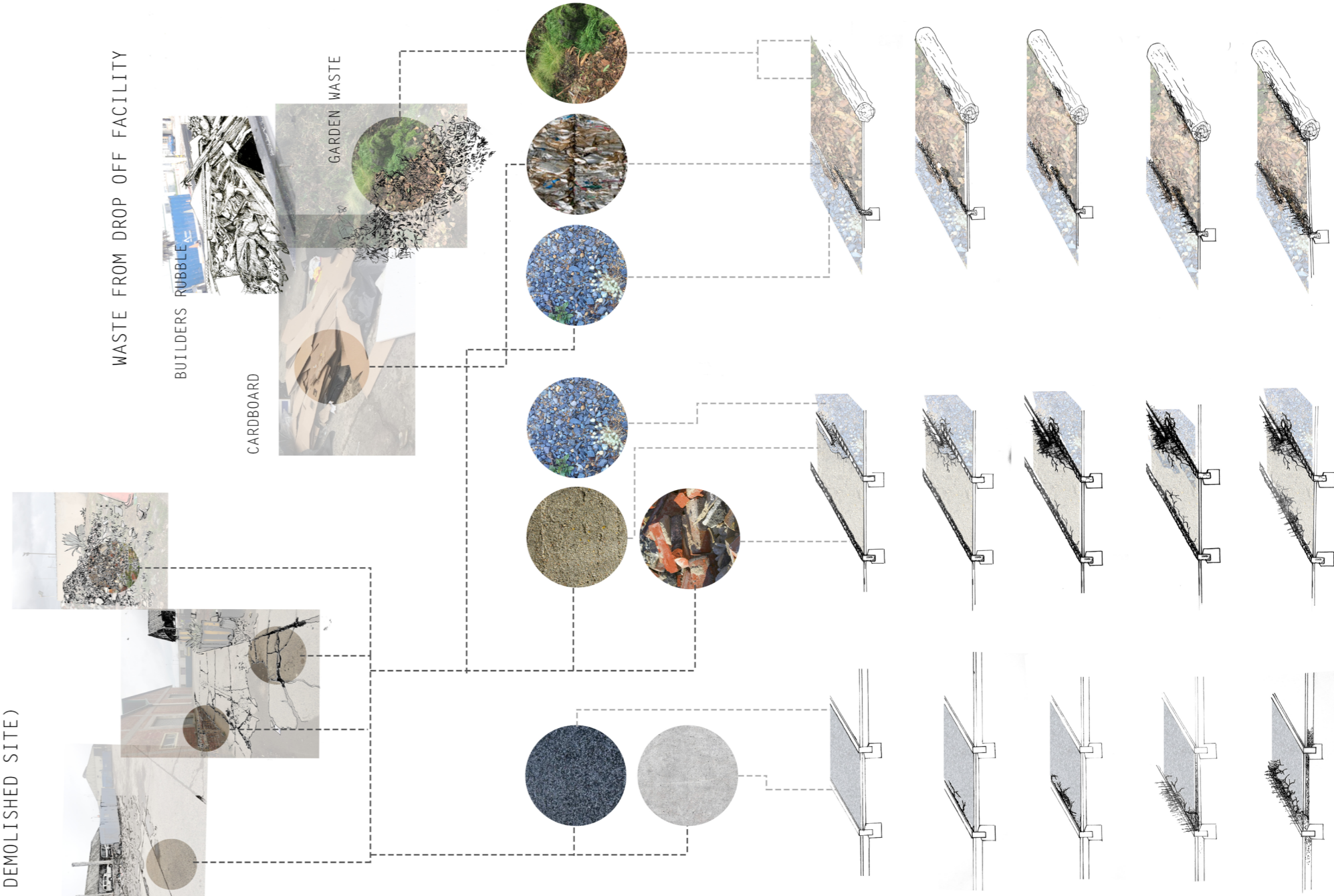


WASTE FROM DROP OFF FACILITY

BUILDERS RUBBLE

CARDBOARD

GARDEN WASTE



References

- Bennet, J. 2009. *Vibrant Matter: A Political Ecology of Things*. Duke University Press, Durham, London
- Berson, H. 1907. *Creative Evolution*. Dover Publications
- Development Action Group, 2018. *Re-imagining Woodstock and Salt River*. ABC Press.
- De Sola-Morales Rubio. 1994. *Terrain Vague in: Anyplace*. MIT Press
- Dyssel, M., Langehoven, B. 2007. The Recycling Industry and Subsistence Waste Collectors: A Case Study of Mitchell's Plain. *Urban Forum*. 18(1): 114-132
- Calkins, M. 2009. *Materials for Sustainable Sites*. John Wiley and Sons
- Hebel, D. E., Wisniewska, M. H., Heisel, F. 2014. *Building from Waste*. Birkhauser
- Scanlan, J. 2005. *On Garbage*. Reaktion Books
- Till, J. 2009. *Architecture Depends*. MIT Press
- Thompson, M. 1979. *Rubbish Theory: The Creation and Destruction of Value*. Oxford University Press
- Zimmerman, A. 2009. *Constructing Landscape: Materials, Techniques and Structural Components*. Birkhauser
- Whiston-Spirn, A. 1984. *The Granite Garden: Urban Nature and Human Design*. Basic Books