



CLINICAL IMAGES

Assessing scimitar syndrome – use of MRI and MRA

Vijay Dahya, Bongani M Mayosi

A 36-year-old woman was assessed as a live-related kidney donor. Her chest radiograph showed unsuspected dextroposition of the heart, diminished volumes of the right middle and lower lobes, and a scimitar-shaped shadow extending from the right hilum to the region of the inferior vena cava (a scimitar is a short sword with a curved blade originally used in Eastern countries) (Fig. 1).

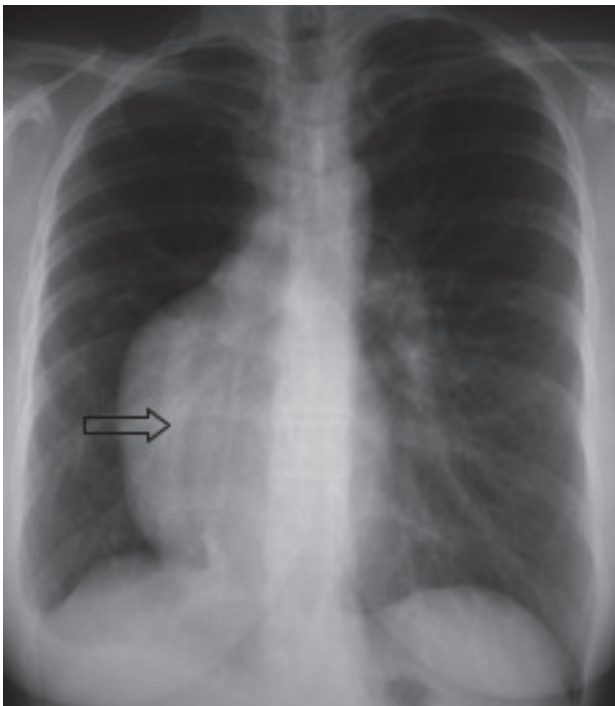


Fig. 1. Frontal chest radiograph showing dextroposition of the heart with volume loss involving the lower and middle lobes of the lung. A 'scimitar' vein (open arrow) is suspected on the right.

At the time of writing, Vijay Dahya was a radiologist in the Division of Radiology, Groote Schuur Hospital and University of Cape Town. He has an interest in cardiac magnetic resonance imaging and is a patron of the classical music and dance forms, particularly when his lovely wife, who is an accomplished classical dancer, is performing.

Bongani Mayosi, Professor and Head of the Department of Medicine, GSH and UCT, is a researcher, teacher and clinician working on the elimination of heart diseases of the poor. When not working he enjoys the company of his wife and daughters, which is about the only pastime he has.

Non-invasive examination using computed tomography (CT) (Fig. 2), magnetic resonance imaging (MRI) (Figs 3 - 5) and magnetic resonance angiography (MRA) (Fig. 6) confirmed the diagnosis of scimitar syndrome, which is characterised by partially anomalous pulmonary venous drainage, pulmonary lobar hypogenesis and cardiac dextroposition. The associated

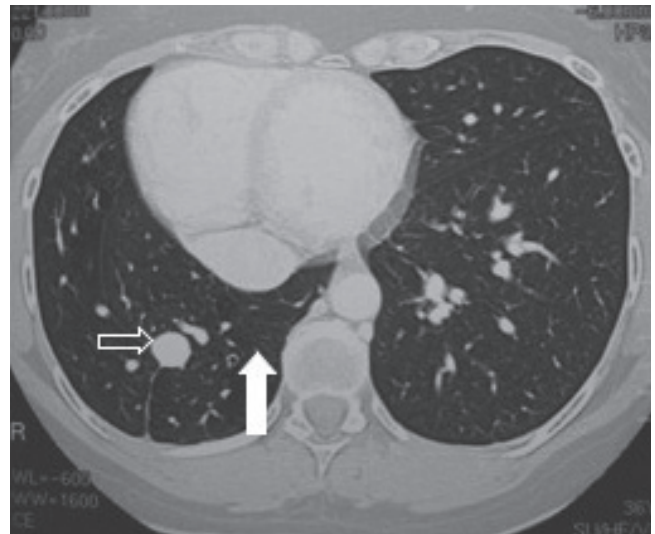


Fig. 2. Contrast-enhanced CT scan of the chest confirming the pulmonary hypogenesis involving the right middle and lower lobes (solid arrow) with cardiac dextroposition. The 'scimitar' draining vein is confirmed (open arrow).

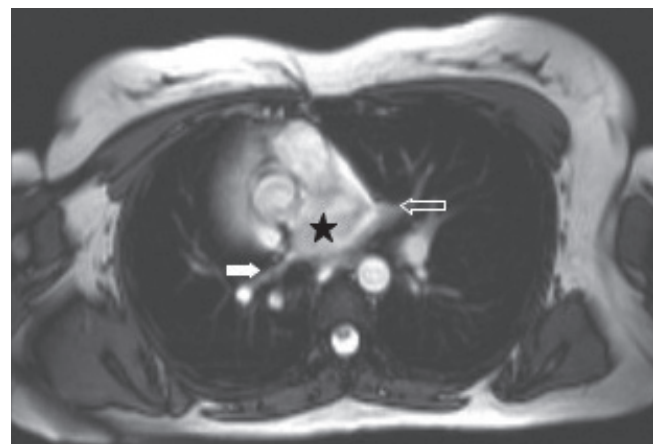


Fig. 3. Axial true-FISP (bright blood) ECG-triggered MRI showing cardiac dextroposition and normal drainage of the left (open arrow) and right (solid arrow) superior pulmonary veins into the left atrium (star) (FISP = fast imaging with steady-state precession).

Corresponding author: B Mayosi (bongani.mayosi@uct.ac.za)