

**THE CHARLES DAVIDSON BELL
HERITAGE TRUST COLLECTION:**

A CATALOGUE AND CRITICAL STUDY

VOLUME TWO: CATALOGUE OF PICTURES

MICHAEL ROY LIPSCHITZ

Thesis submitted in fulfilment of the requirements for
the degree of Master of Arts in the department of
History of Art, University of Cape Town

September 1992

The University of Cape Town has been given
the right to reproduce this thesis in whole
or in part. This copy is for the author.

The copyright of this thesis vests in the author. No quotation from it or information derived from it is to be published without full acknowledgement of the source. The thesis is to be used for private study or non-commercial research purposes only.

Published by the University of Cape Town (UCT) in terms of the non-exclusive license granted to UCT by the author.



Fig 1



Fig 2



Fig 3

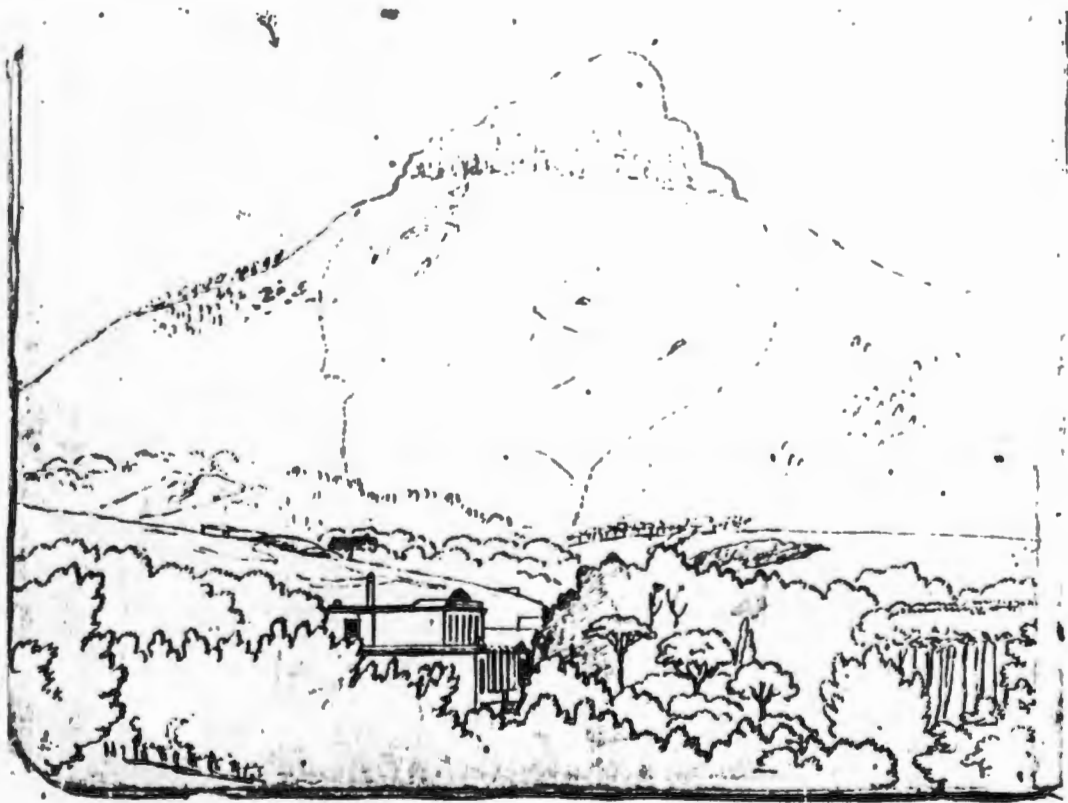


Fig 4



Fig 5



Fig 6



Fig 7

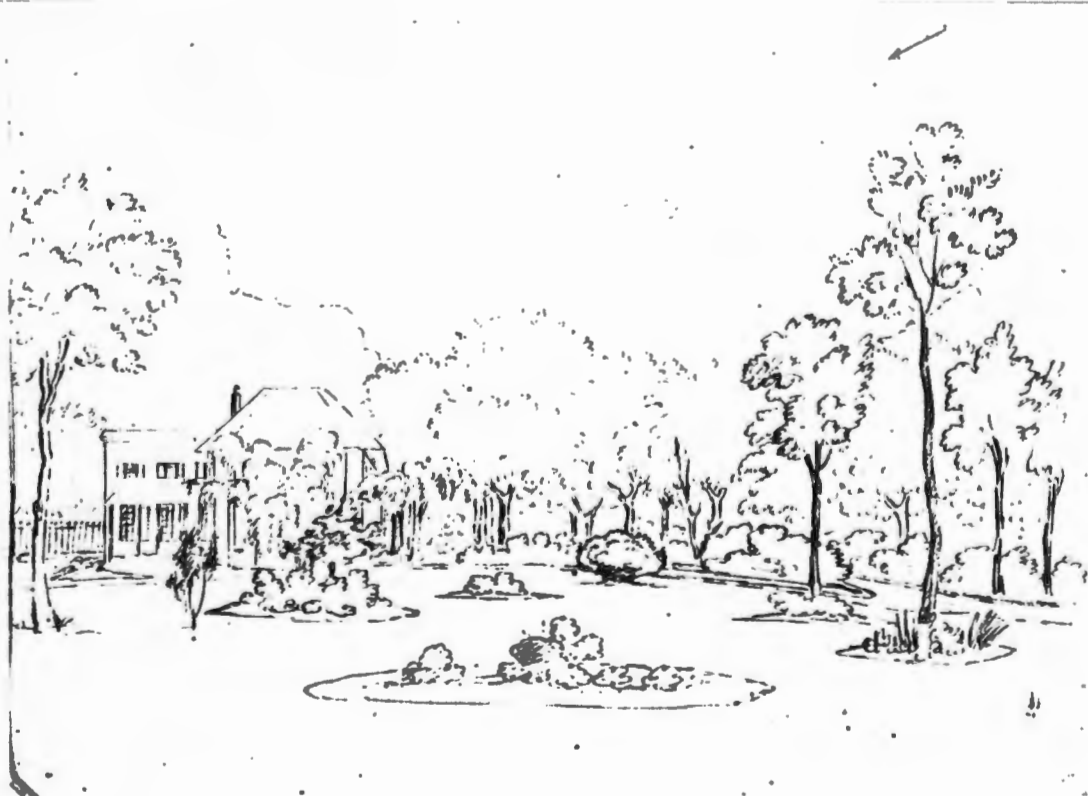


Fig 8



Fig 9



Fig 10

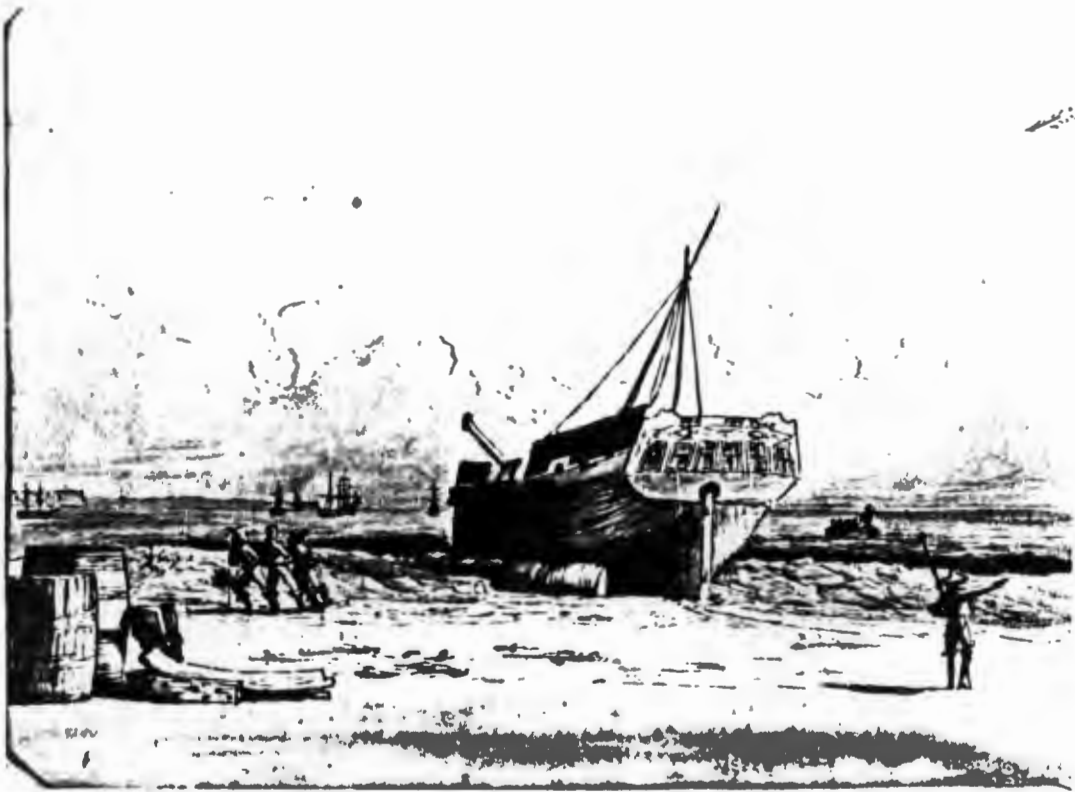


Fig 11



Fig 12



Fig 13



Fig 14



Fig 15

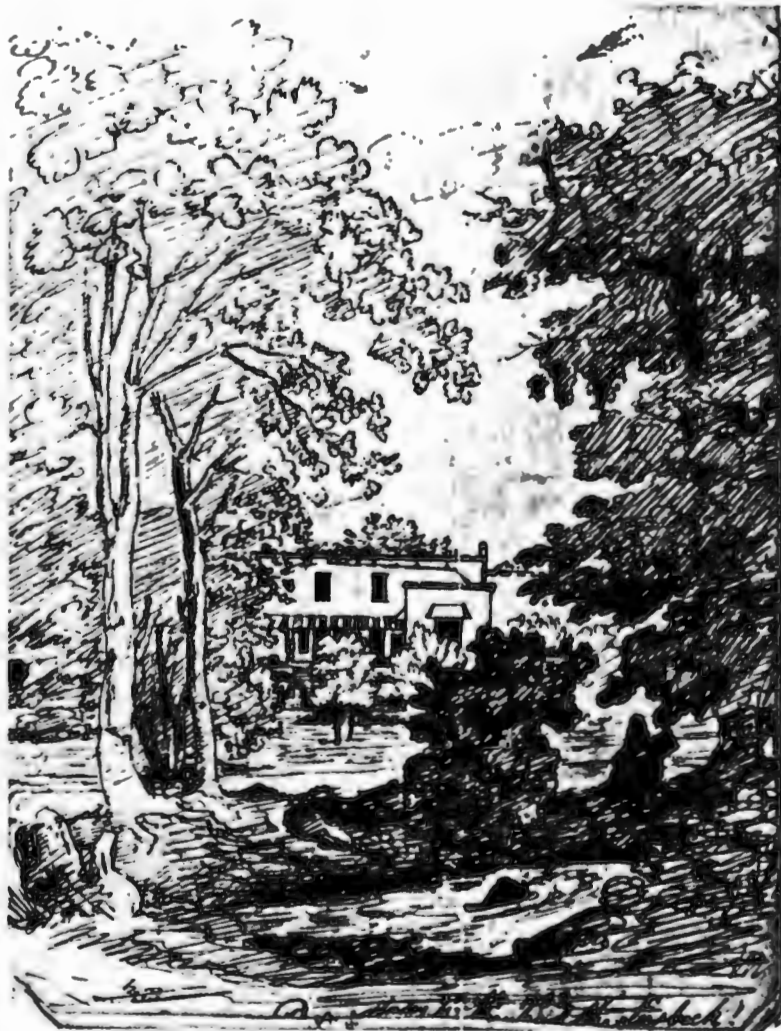


Fig 16

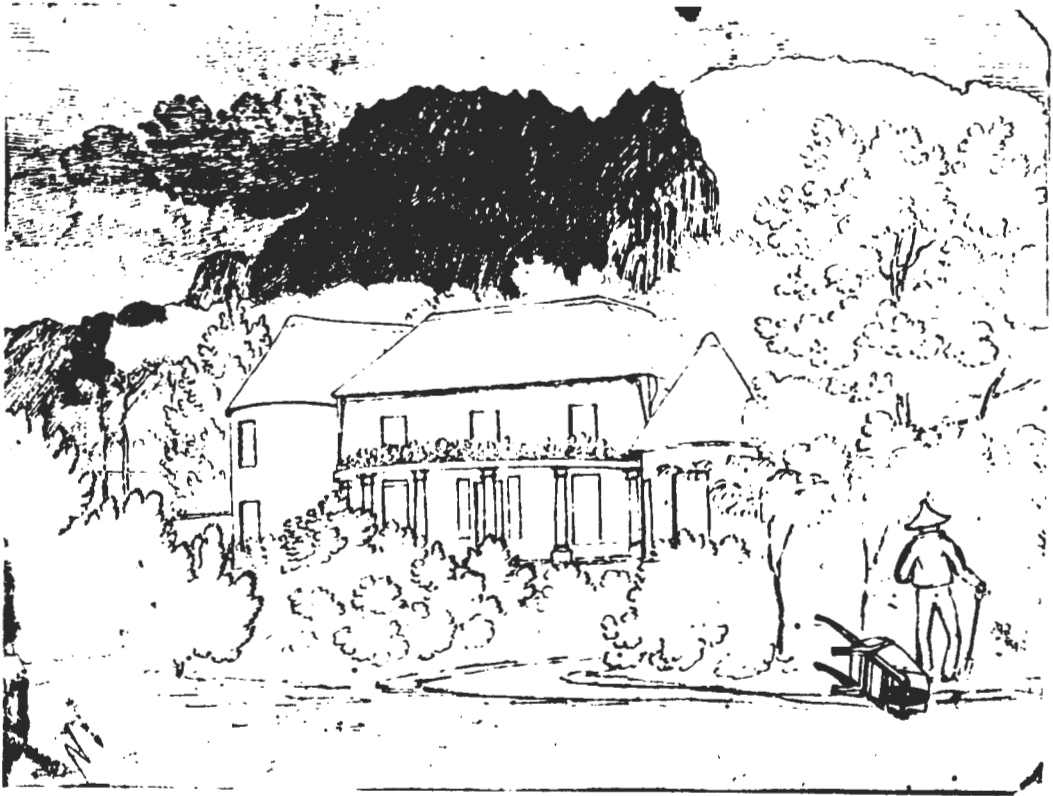


Fig 17



Fig 18

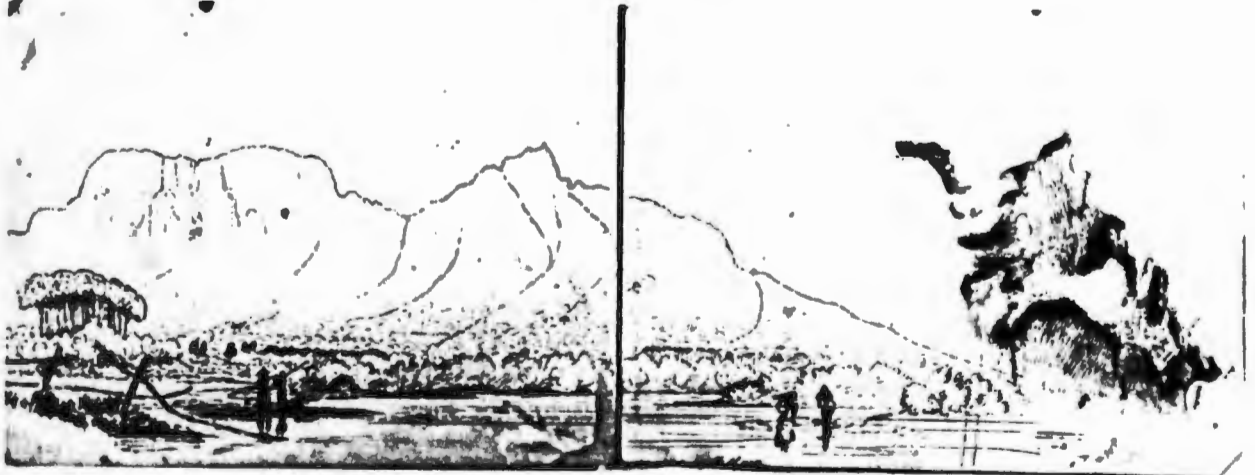


Fig 19

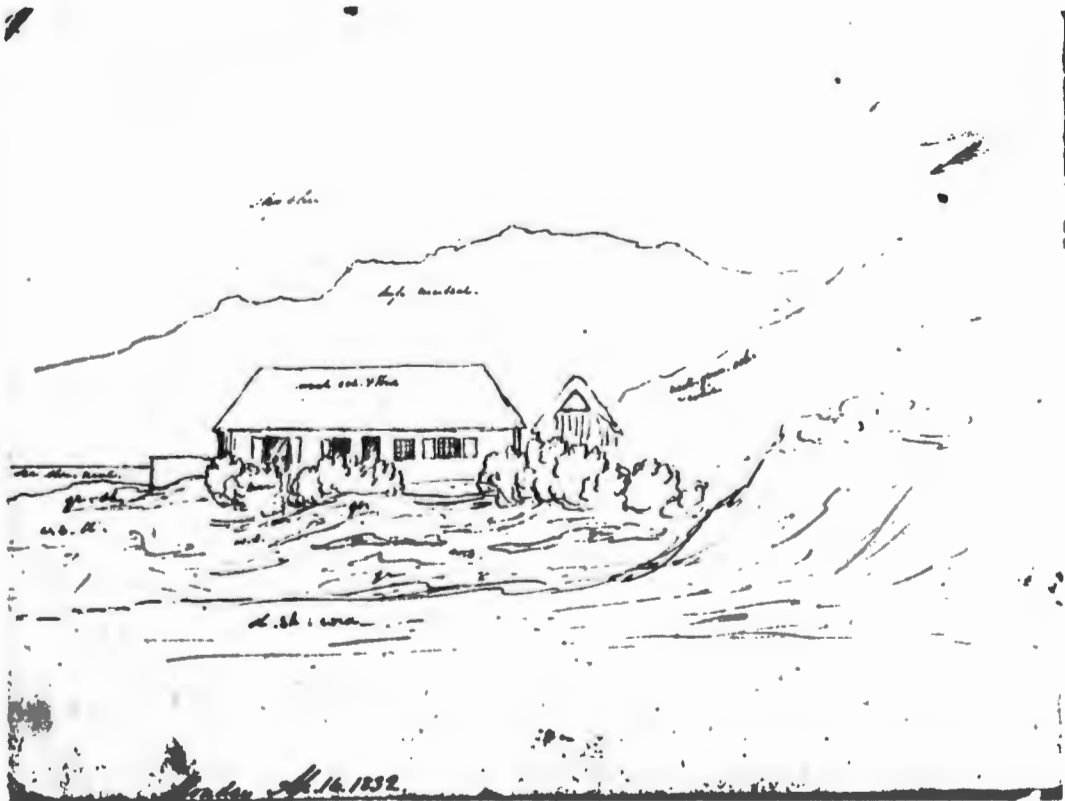


Fig 20



Fig 21

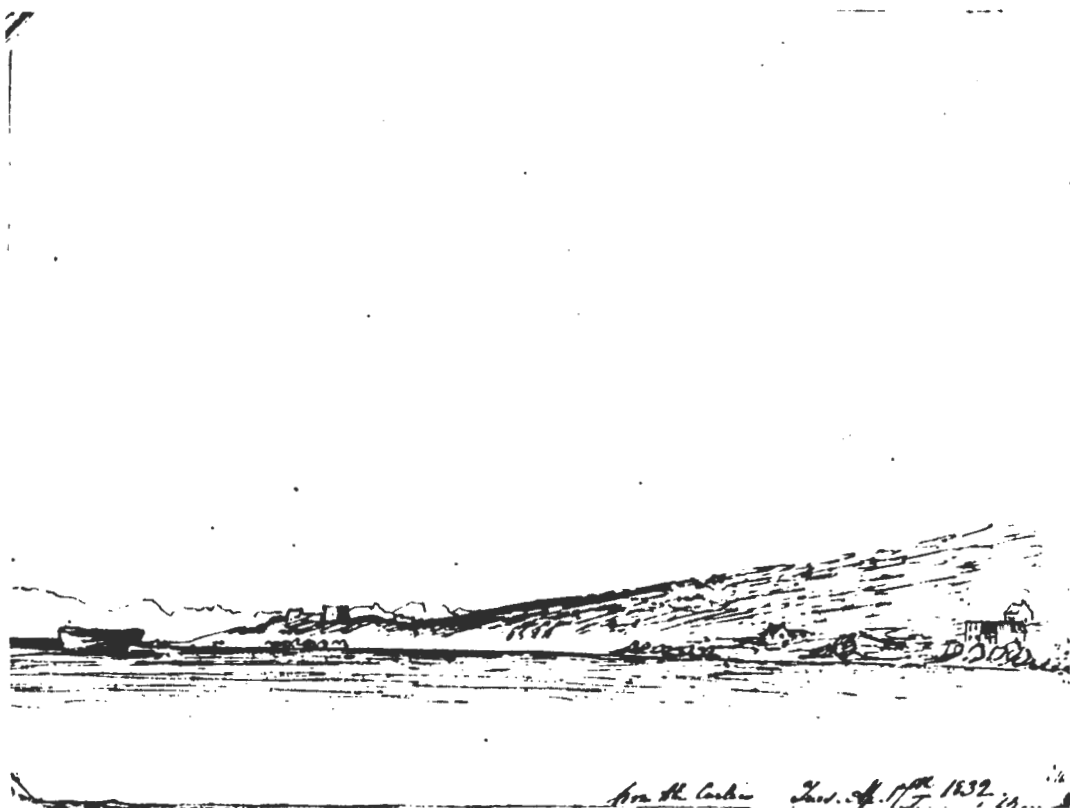


Fig 22



Fig 23

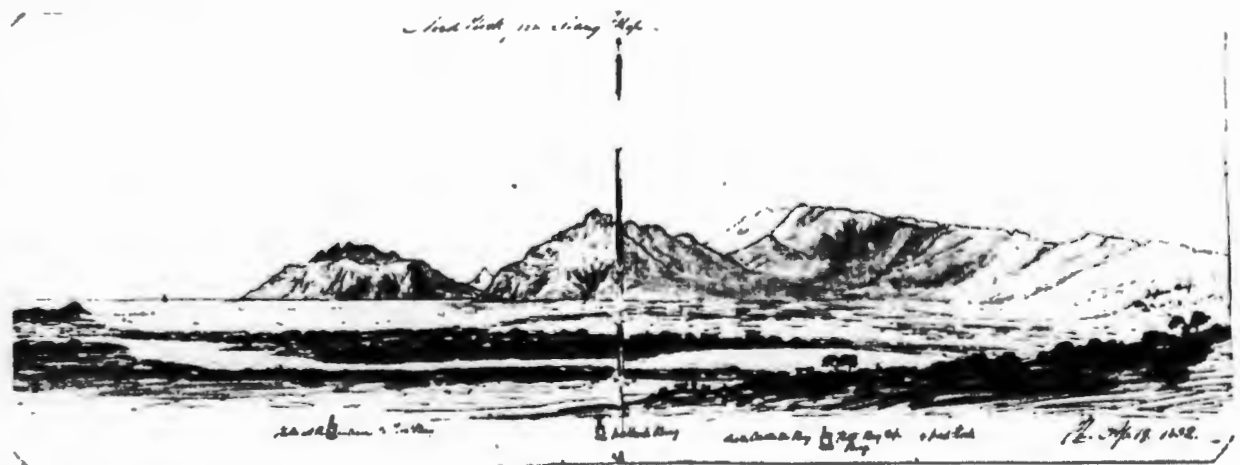


Fig 24

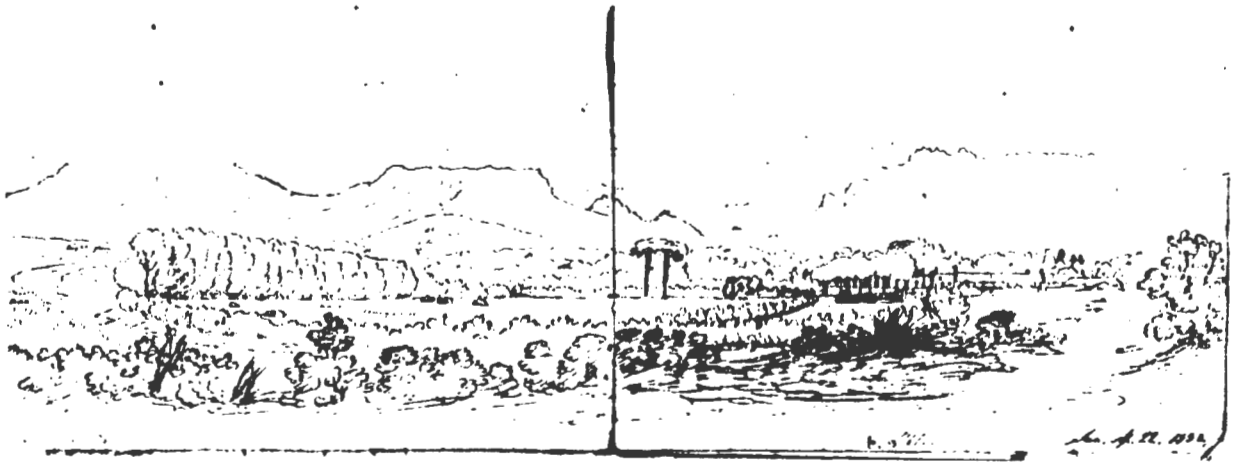


Fig 25



Fig 26



Fig 27



Fig 28

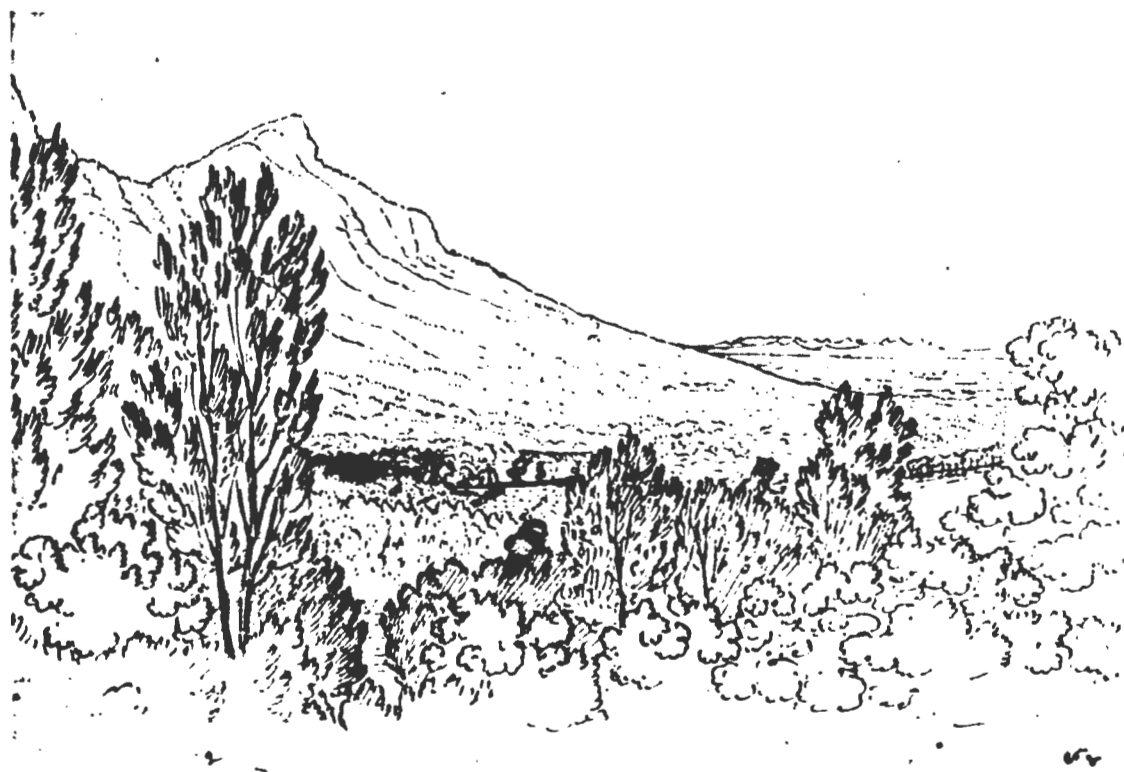


Fig 29



Fig 30

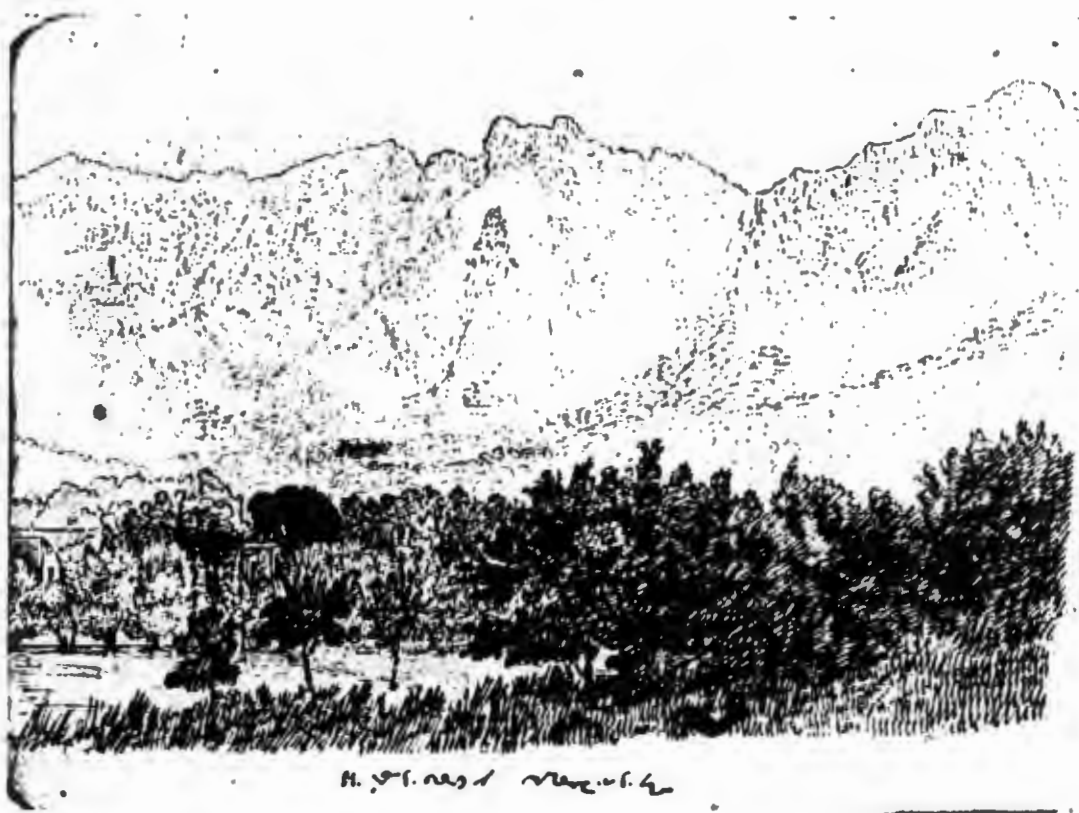


Fig 31



Fig 32

SEEK
W. W. D.
1871
1872

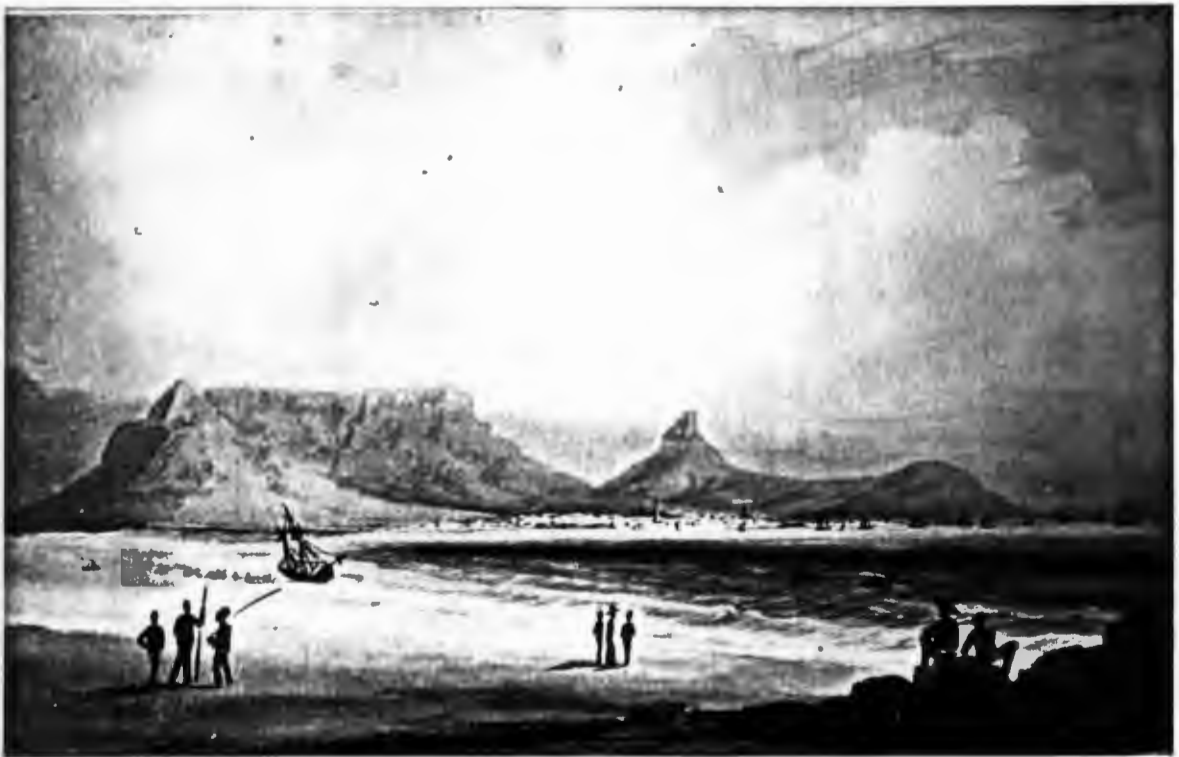


Fig 33



Fig 34



Fig 35

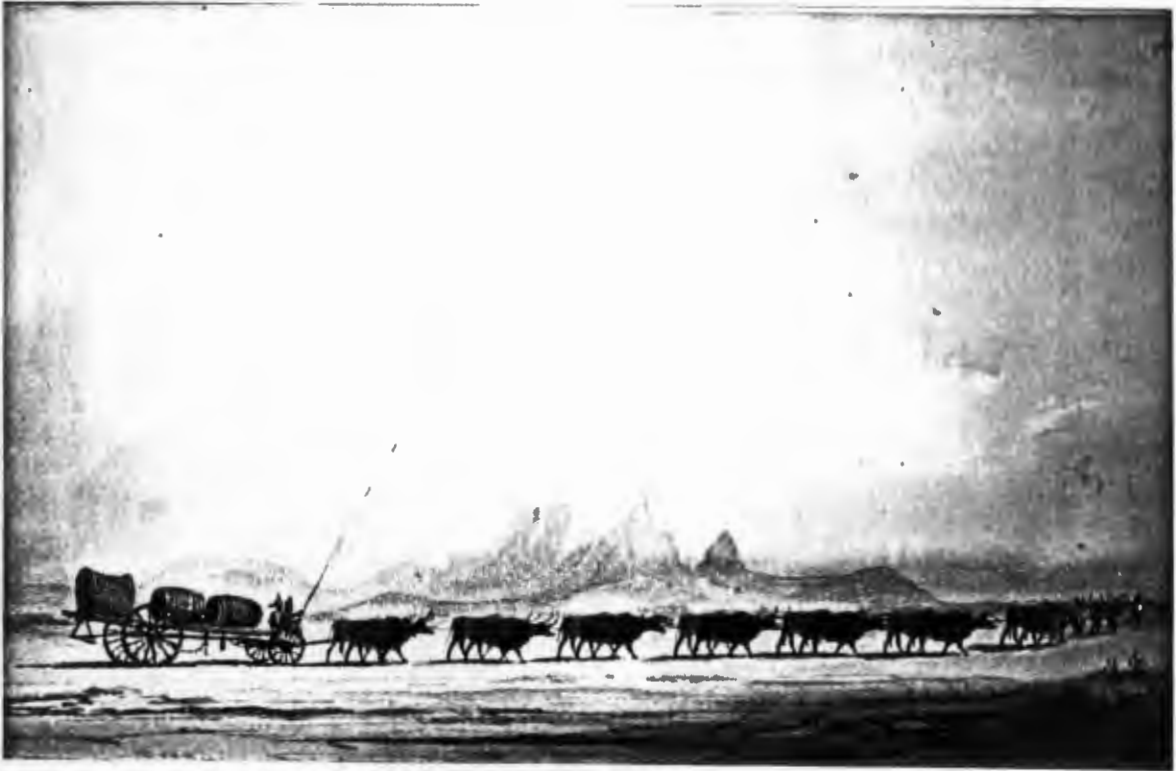


Fig 36

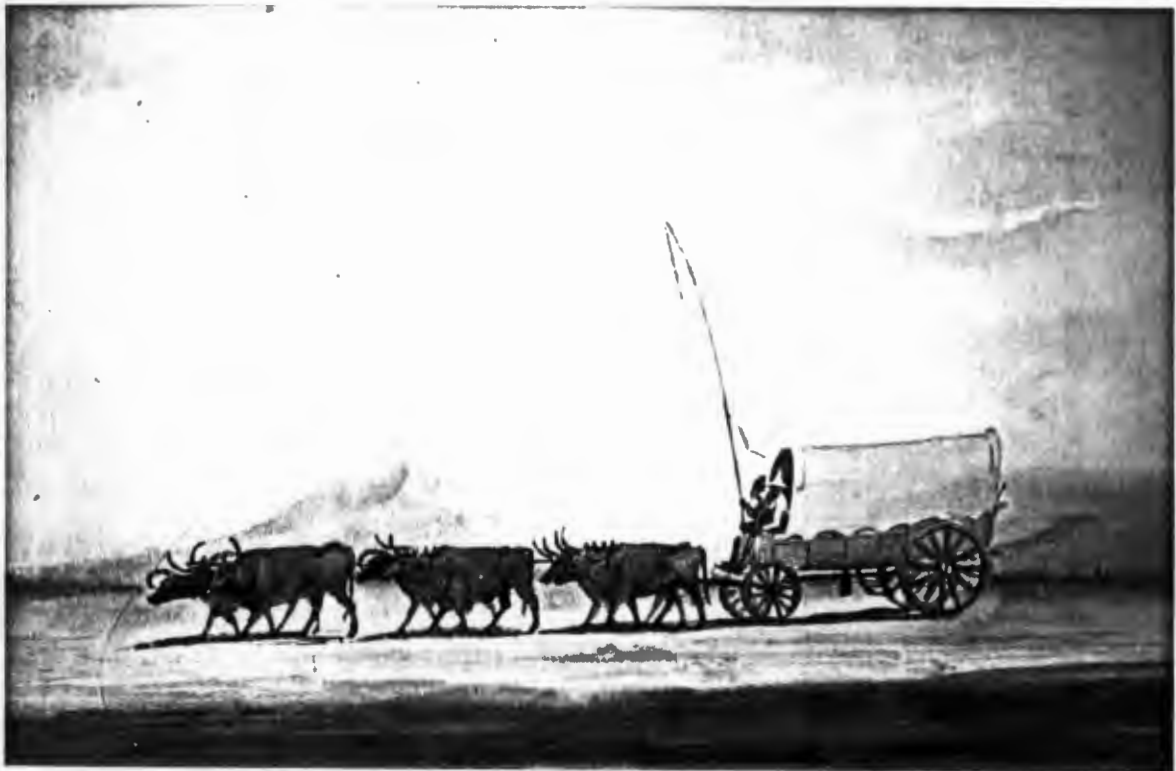


Fig 37



Fig 38



Fig 39



Fig 40



Fig 41



Fig 42



Fig 43

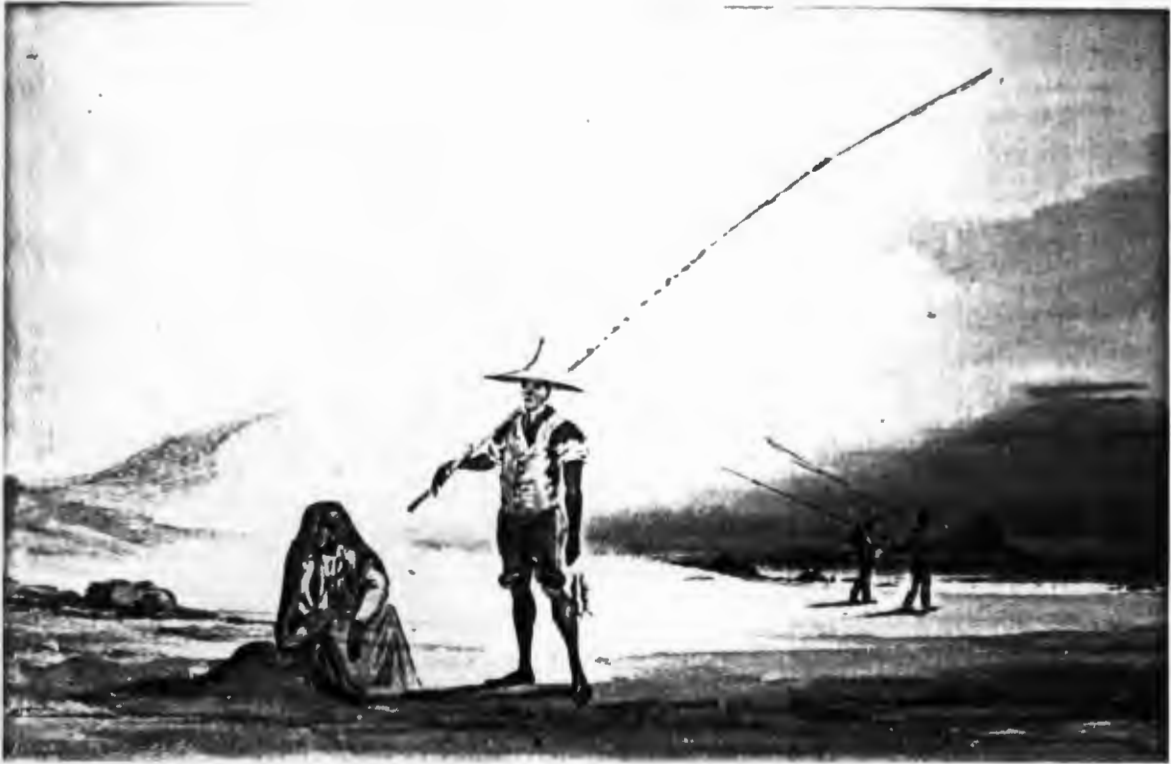


Fig 44



Fig 45



Fig 46



Fig 47



Fig 48



Fig 49



Fig 50



Fig 51

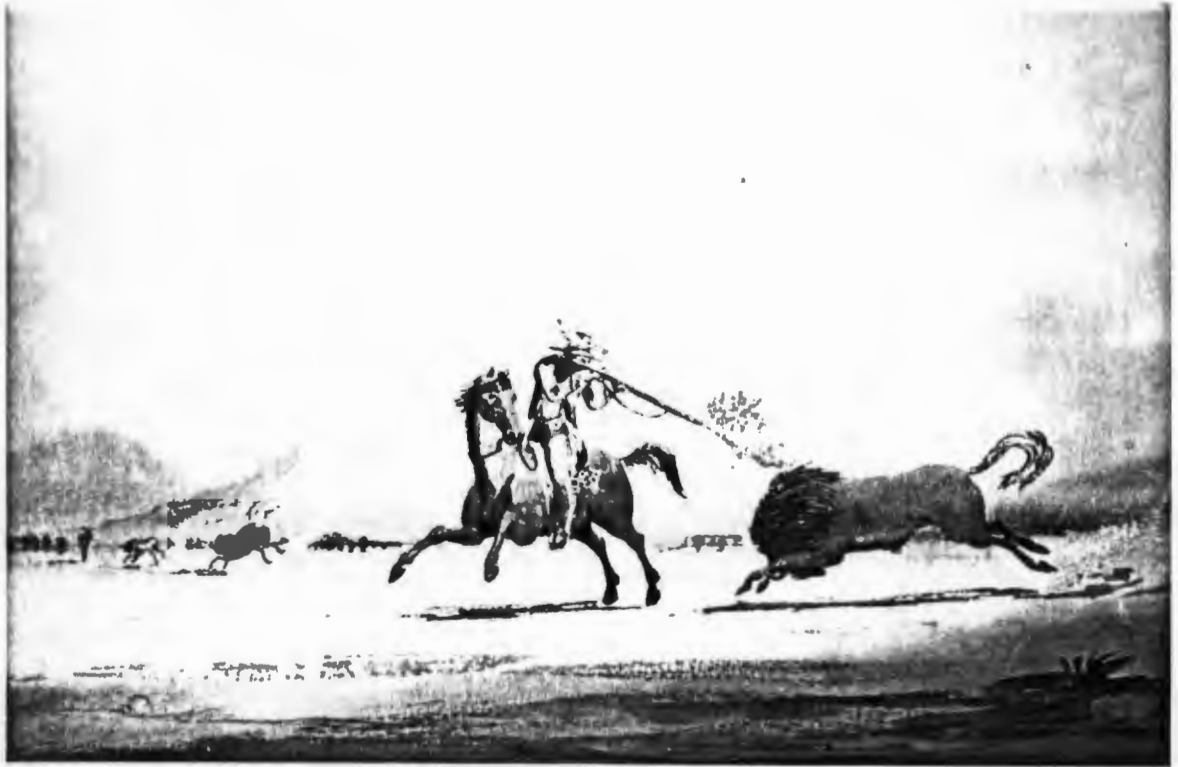


Fig 52



Fig 53



Fig 54



Fig 55



Fig 56



Fig 57



Fig 58



Fig 59



Fig 60



Fig 61

Some Rough Sketches
 & Scenes
 Illustrative of late events in
 Southern Africa.

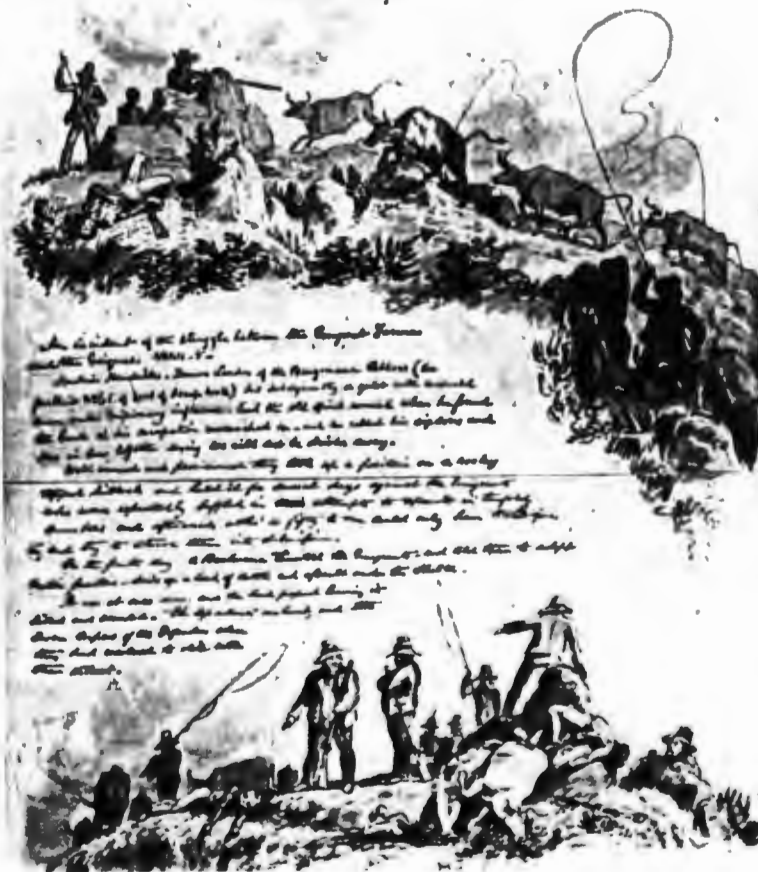


Fig 62

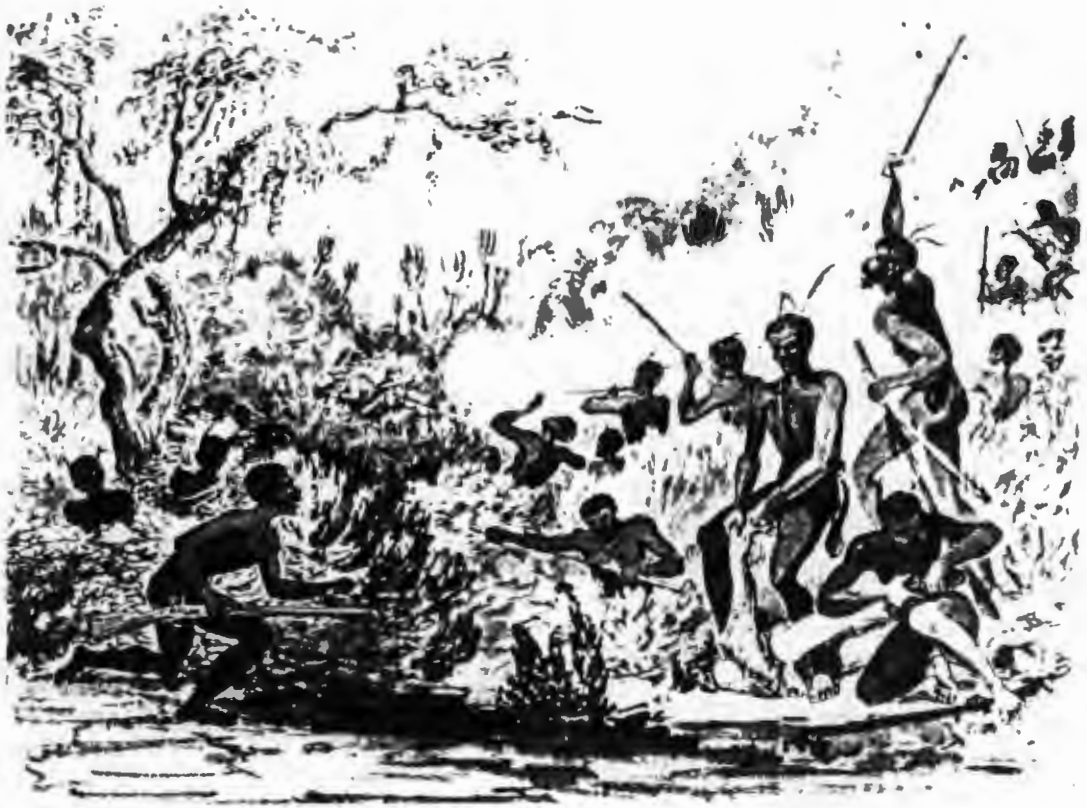


Fig 63 a

T H E K A F F I R W A R .



Fig 63 b

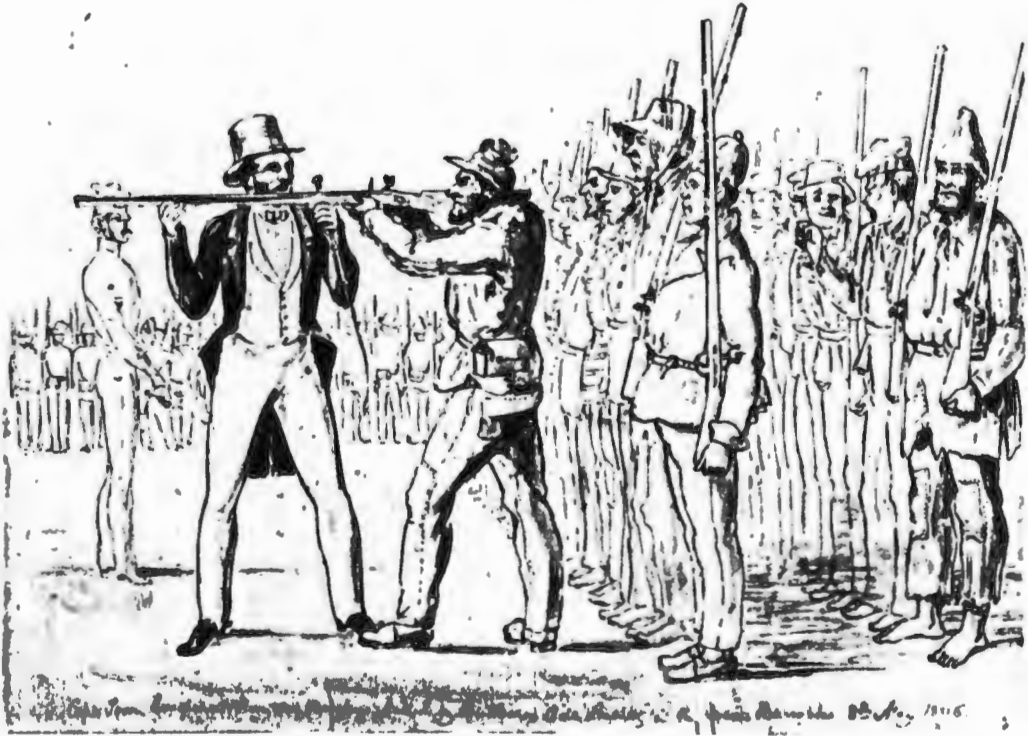


Fig 64



Fig 65



Fig 66



Fig 67



U.S.S. Albatross at anchor in the harbor of Honolulu - Oct. 10th 1855

Fig 68

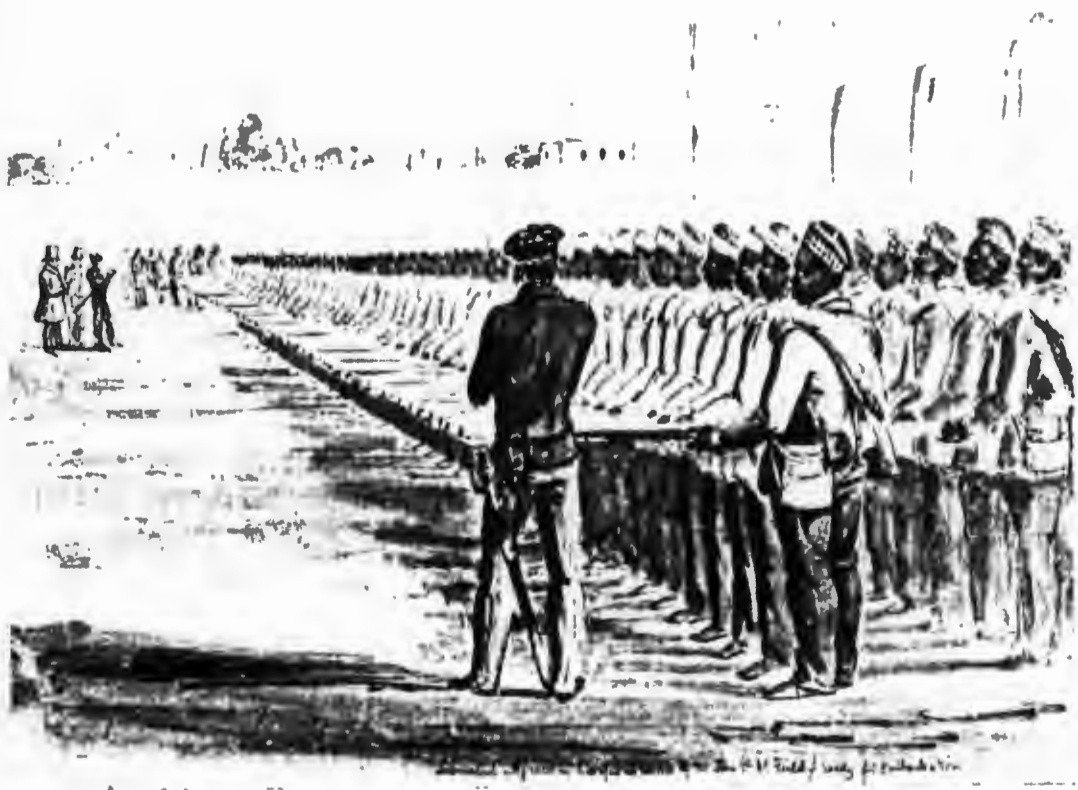


Fig 69



Fig 70



Graham's Town from a sketch by HW Piers Esq Ordnance D.

Fig 71



Group of Fingoes. sketch of G. Johnston.

Fig 72



12. - FORT BEAUFORT from a sketch by Capt. WFD Jervis. R.E.

Fig 73



Fig 74



Fig 75



Fig 76



Fig 77



Fig 78

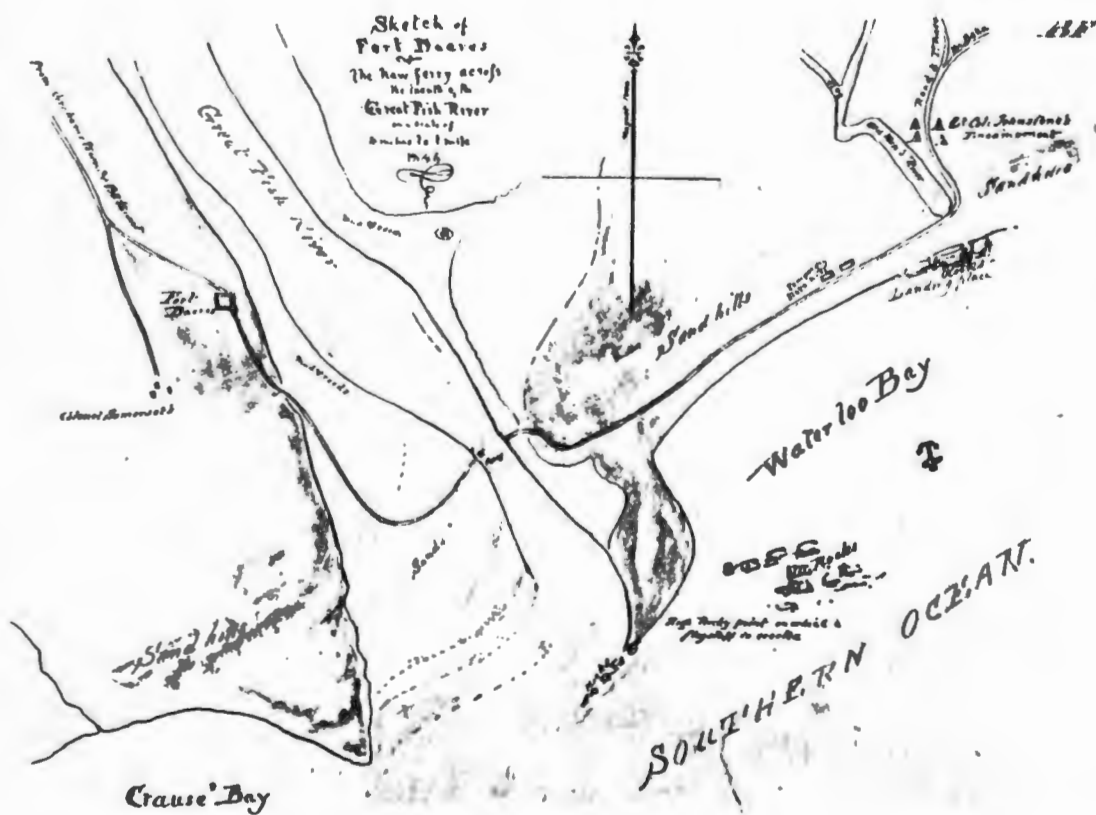


Fig 79

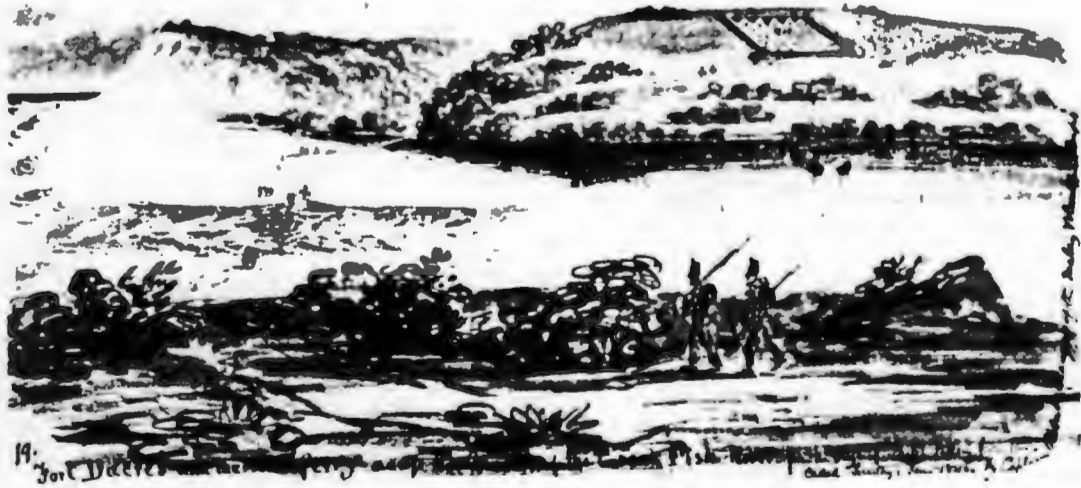


Fig 80



11
 Sulu, a Great Wife of the Chief Guika of the Amakosa
 in 1840 of the present Chief Sandile -

Fig 81



Sundili
city of Magellan
in 1545

Fig 82



Fig 83



Fig 84



94. The Chief of the *Angara* of the *Angara*
son of *Gaika*. The old son chief of the *Angara*

Fig 85



Fig 86



AK

26 - Kafir Warrior. in the old war days -

Fig 87



Fig 88

111.

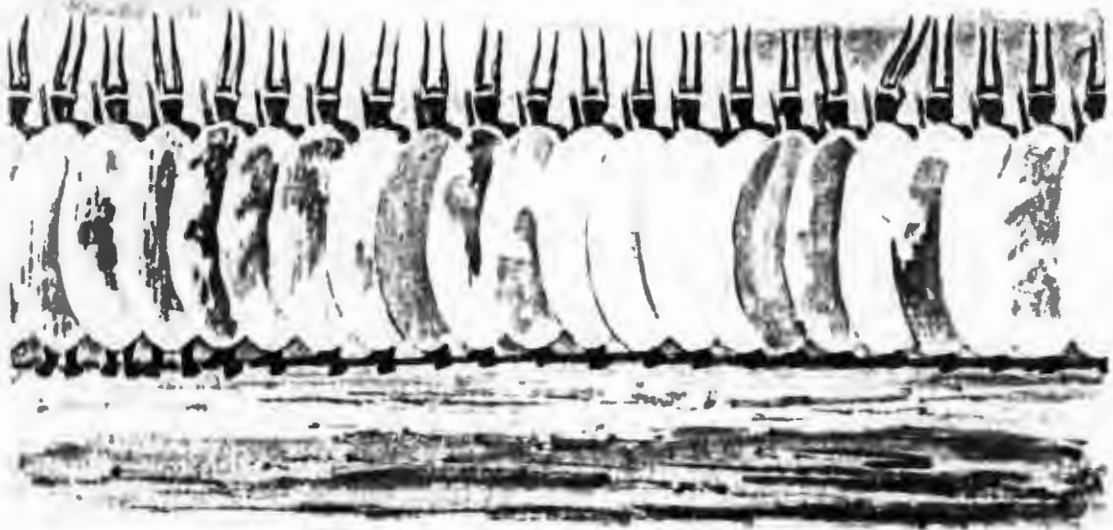
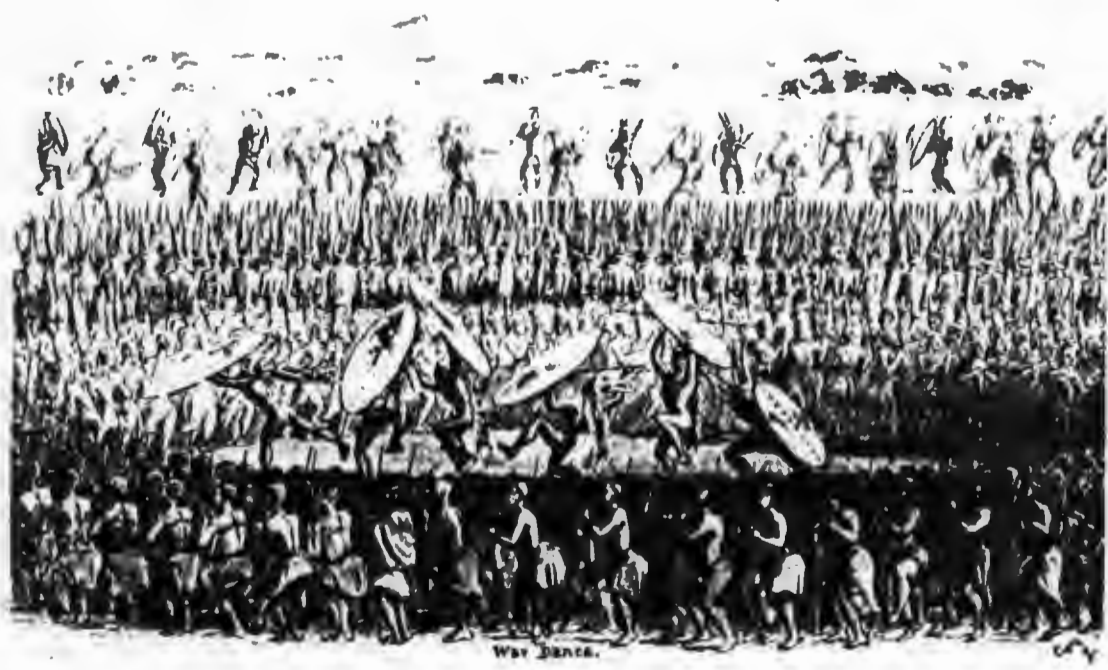


Fig 89



WAR DANCE.

Fig 90



The 2nd of 1888. Little known to the Chiefs here.

Fig 91



Fig 92



Fig 93



Fig 94 a

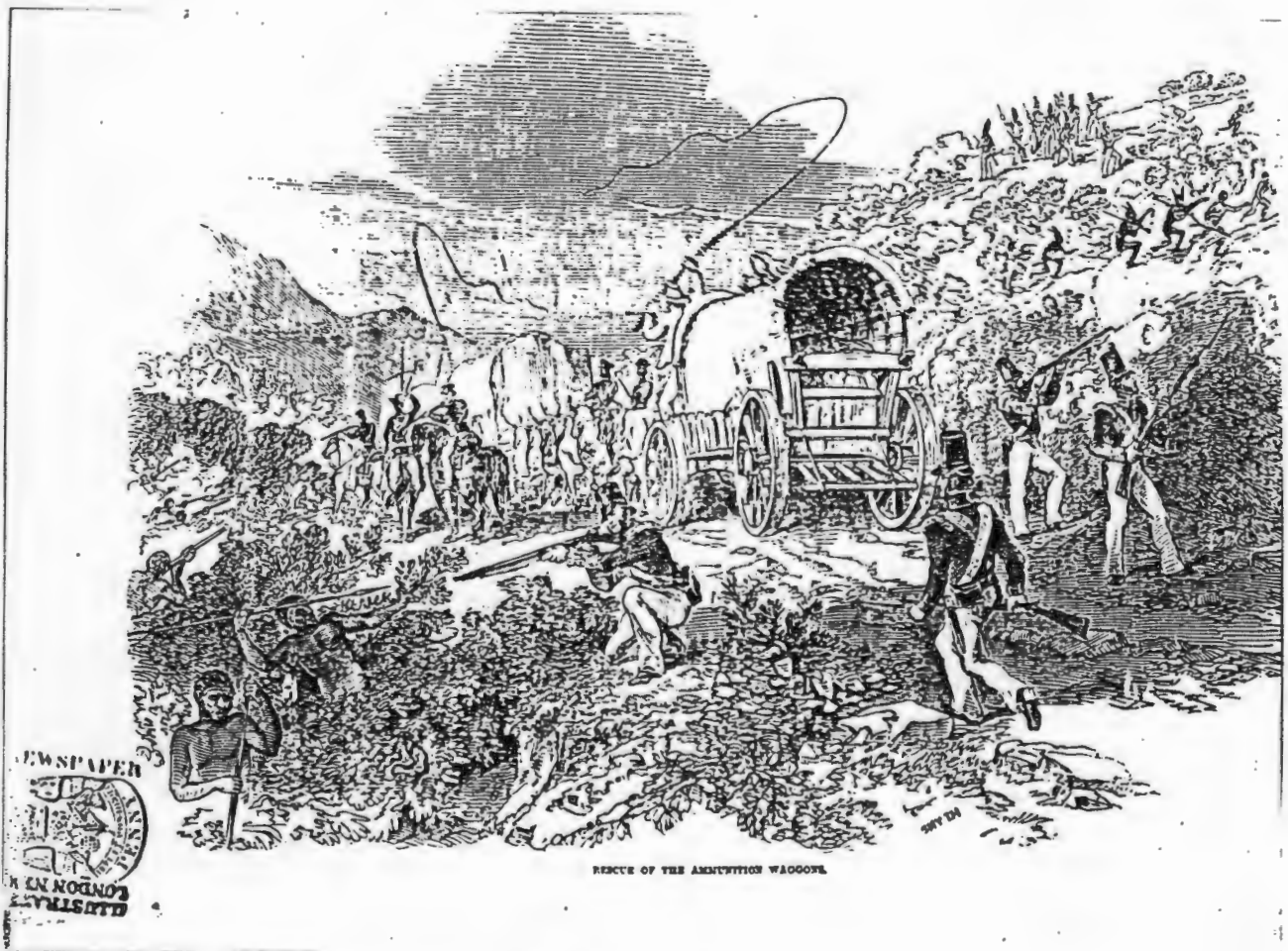


Fig 94 b



Fig 95



Fig 96



John A. Hol's Camp 2^d Jan 1861

Fig 99



Fig 100



Fig 101

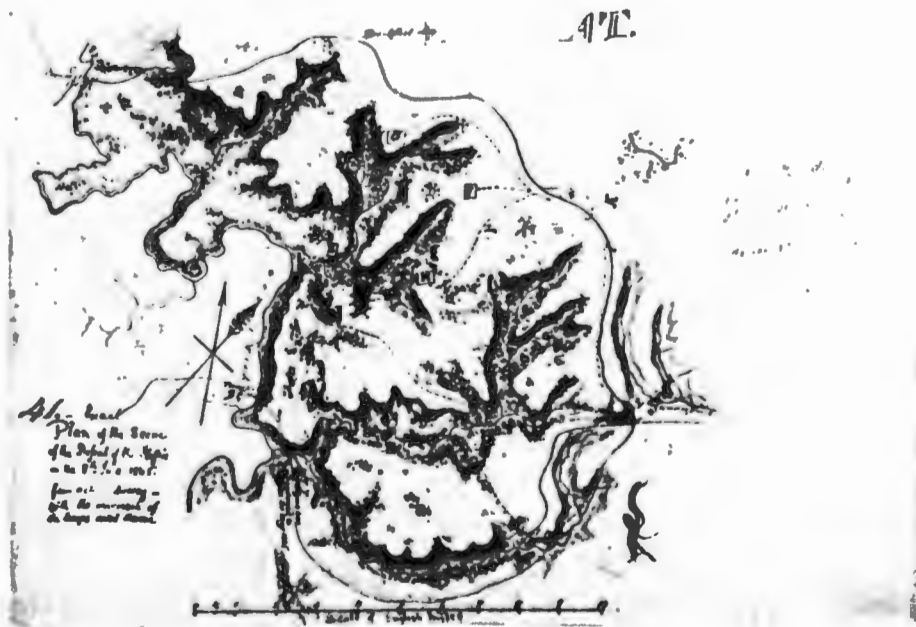


Fig 102



Fig 103



Fig 104



Fig 105



Fig 106



The Field - 8th Dec. 1865 - 2nd Regt. 6th Div. a minute

Fig 107



AV

Fig 108



Fig 109



Fig 110

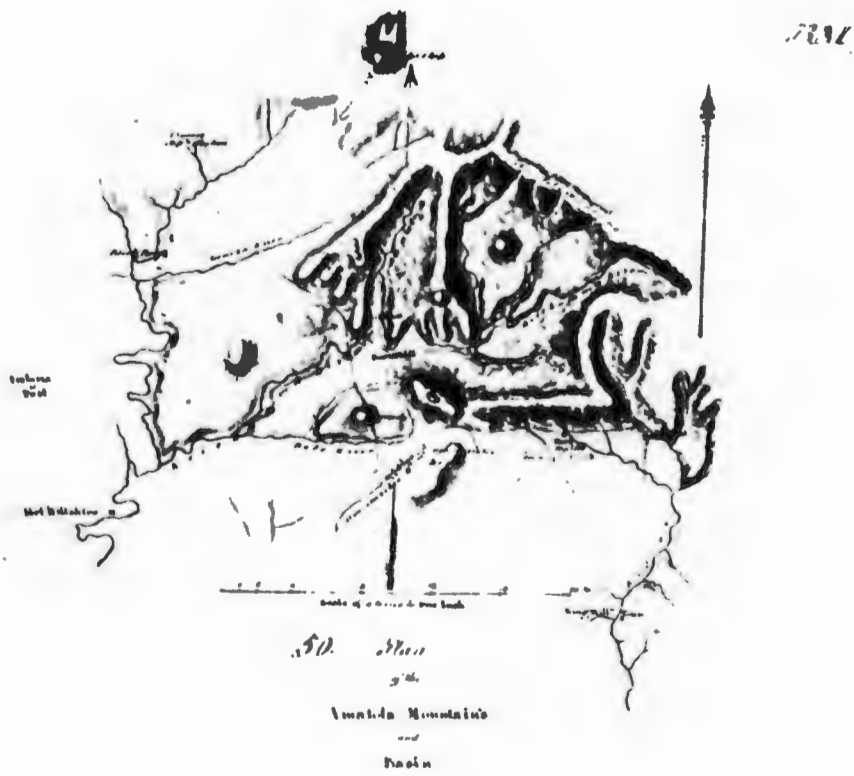


Fig 111



Fig 112



Fig 113

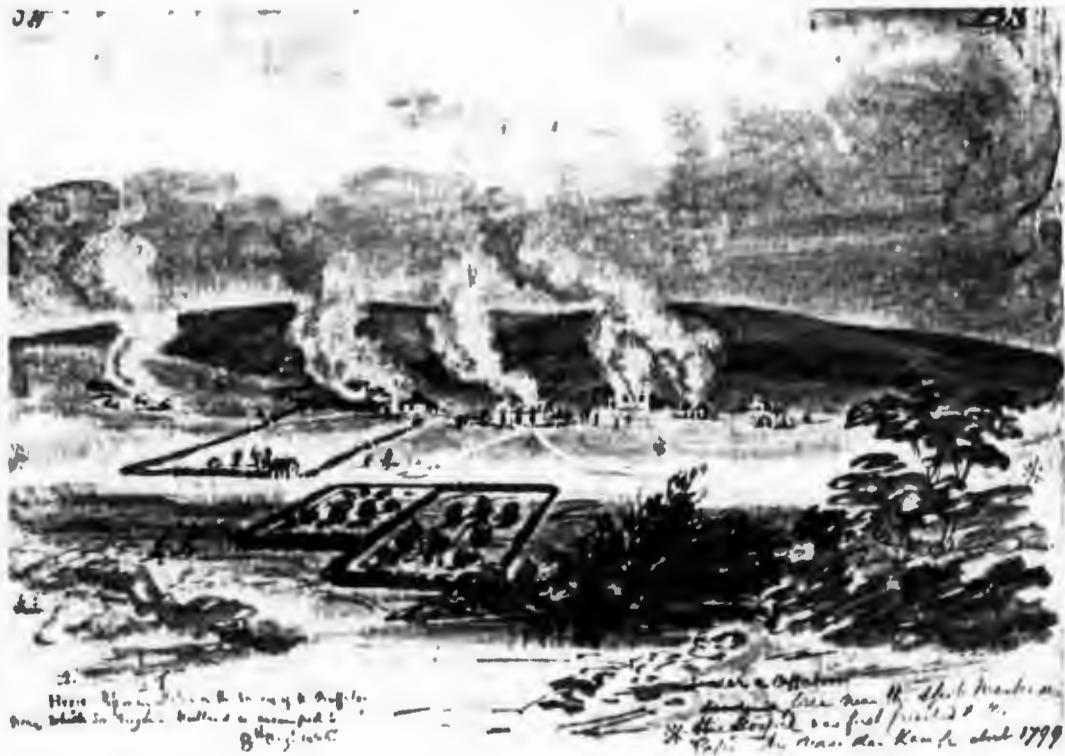


Fig 114



*Showing the Intake for Lake and Intake for Buffalo and the Buffalo Fronts, etc. which is principal part of the Great River
see Appendix to the Report of August 1864*

Fig 115



Sketch of the Intake

Fig 116



Fig 117



Fig 118

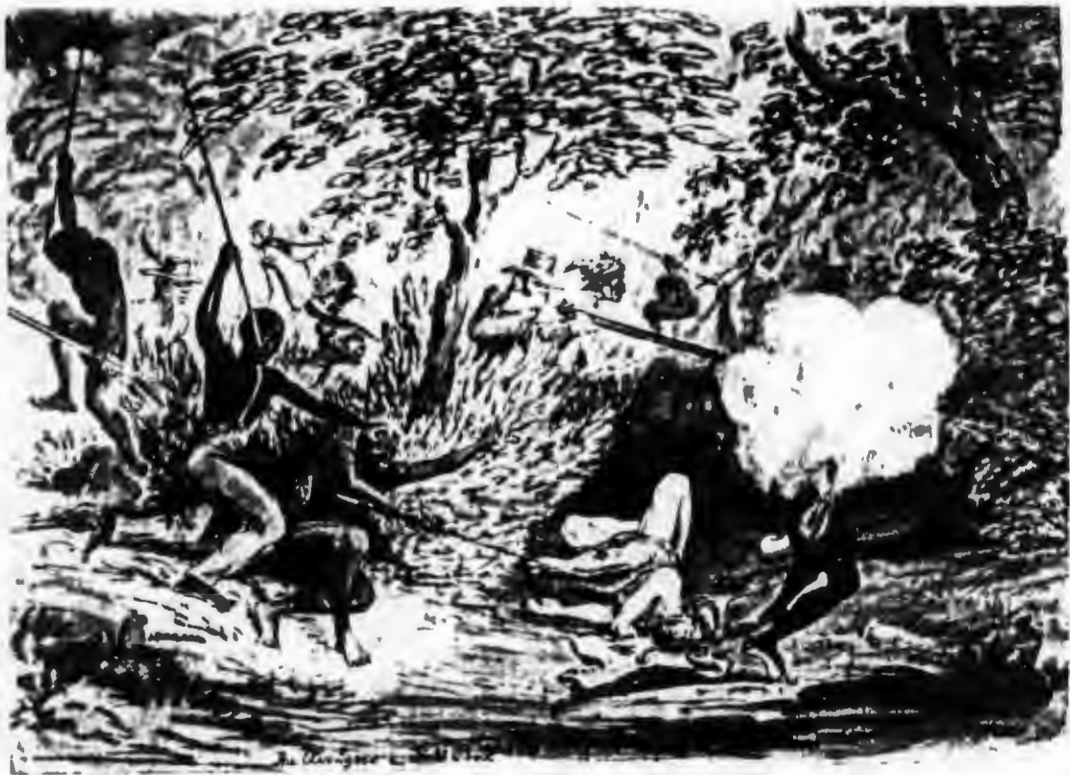


Fig 119



Fig 120



Fig 121

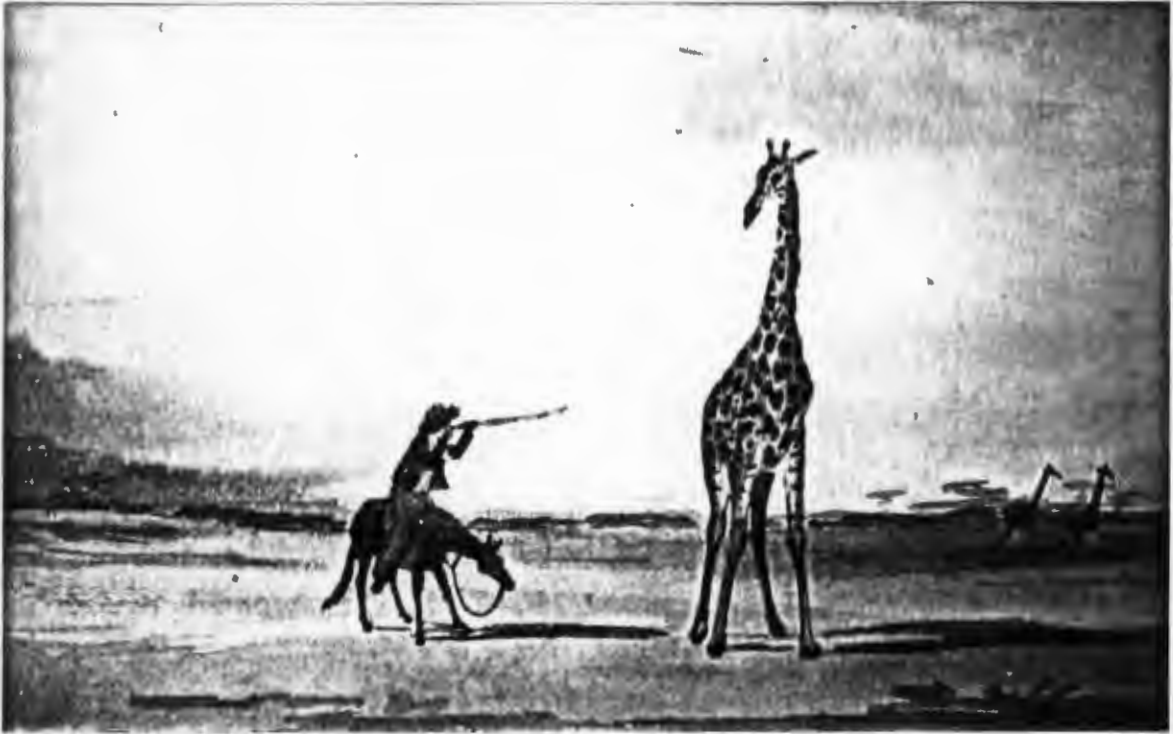


Fig 122



Fig 123



Fig 124



Fig 125



Fig 126



Fig 127



Fig 128



Fig 129



Fig 132



Fig 133



196— The breaking of the surf-boat. - sketch, for the morning & afternoon

Fig 134

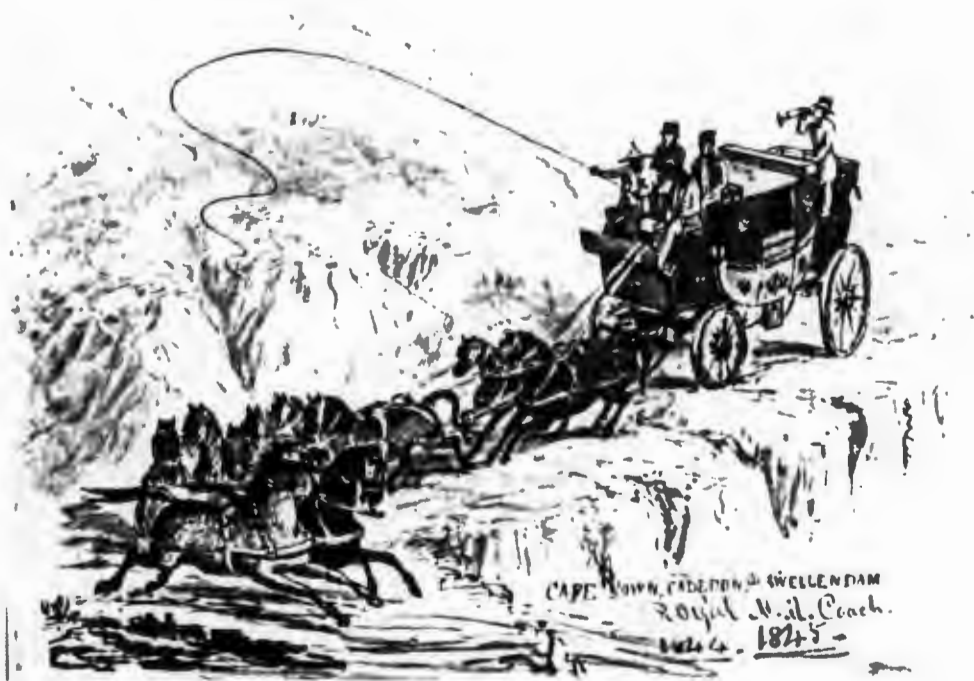


Fig 135



Fig 136



Fig 137



Fig 138



Fig 139



Fig 140



Fig 141



Fig 142



Fig 143



Fig 144



Fig 145

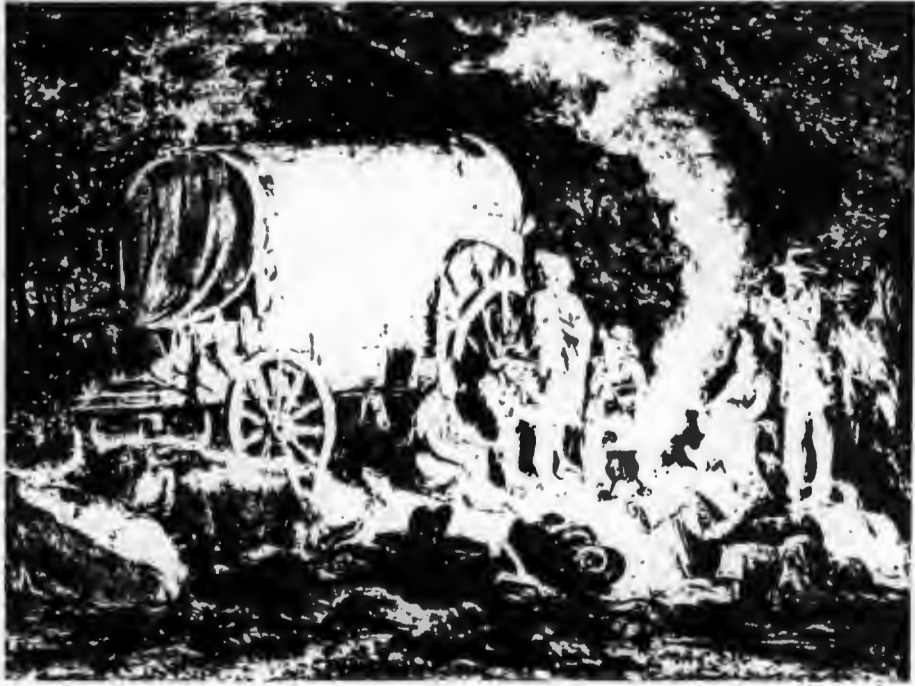


Fig 146



Fig 147



Fig 148



Fig 149



Fig 150