

Investigation of the assumed similar efficiency of policing effort types for West Coast rock lobster

A. Brandão and D.S. Butterworth

Marine Resource Assessment & Management Group (MARAM)
Department of Mathematics and Applied Mathematics
University of Cape Town
Rondebosch 7701, Cape Town

April 2018

Introduction

The GLM approach to obtain a confiscations per unit policing effort index by Brandão *et al.* (2016) assumes that the efficiency for each of the policing effort type is similar. This assumption is investigated in this paper. GLM estimated poaching trends are compared with those agreed by the WCRL SWG are also shown.

Results

Figure 1 compares the GLM year effect for policing effort with the individual policing effort types for Super-areas 3+4+5+6. Results are shown for complete years only and normalised to a 20101 value set to 1. Figure 2 shows these results for Super-area 8+.

Figure 3 shows the comparison between the GLM ratio of the number of confiscations plus abandonments to policing effort with the WCRL SWG agreements on the poaching trends for Super-areas 3+4+5+6 and Super-area 8+.

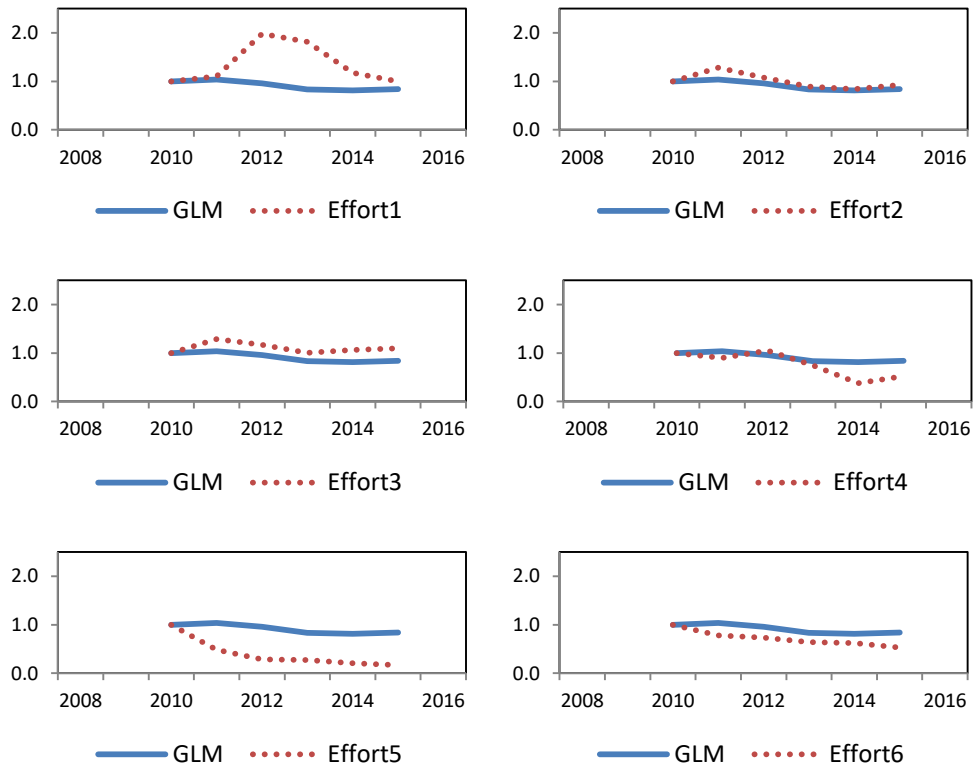


Figure 1. GLM Year effect for policing effort together with the individual policing effort types for Super-areas 3+4+5+6. Results are shown for complete years only and normalised to the 2010 value set to 1.

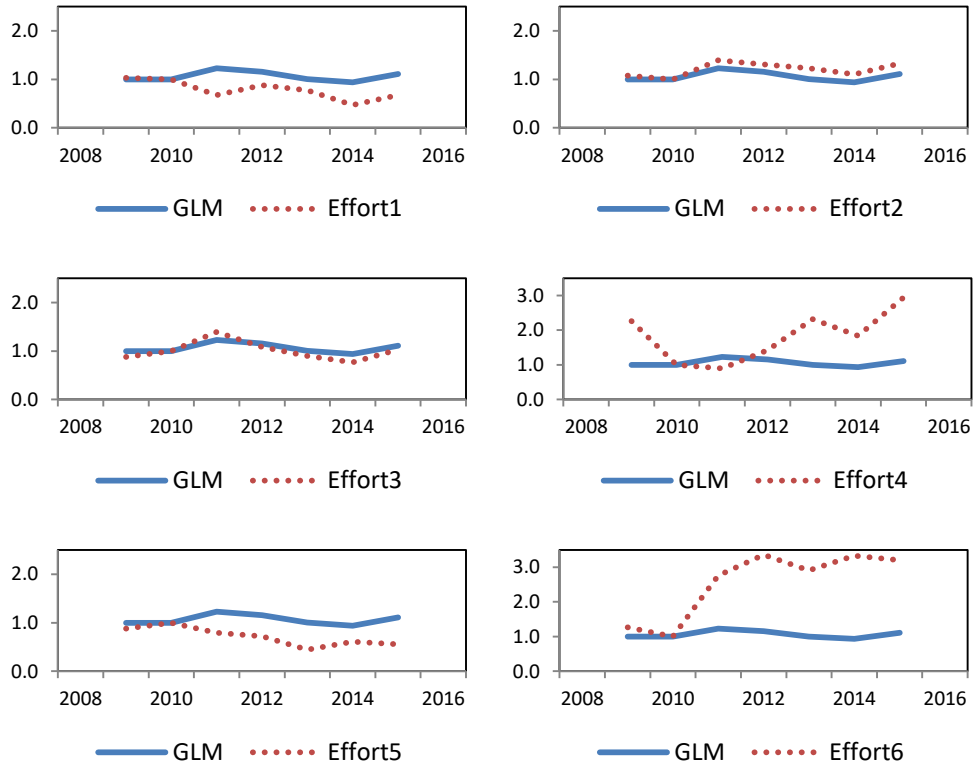


Figure 2. GLM year effect for policing effort and the data for the individual policing effort types for Super-area 8+. Results are shown for complete years only and normalised to the 2010 value set to 1.

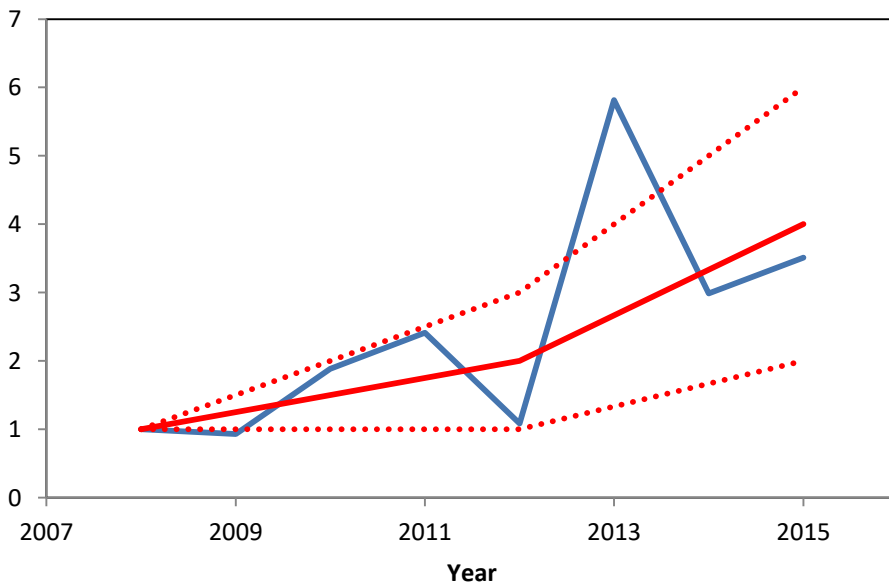
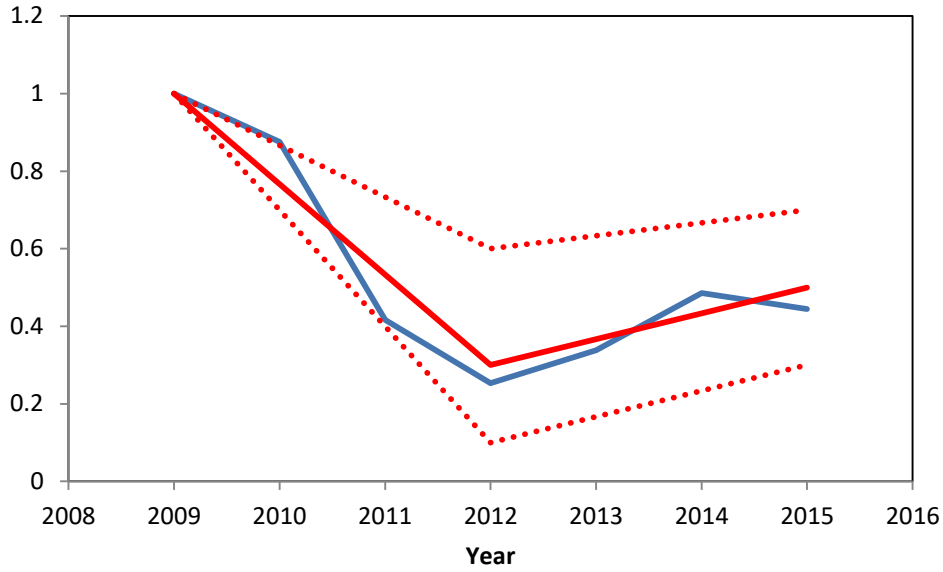


Figure 3. GLM ratio of the number of confiscations plus abandonments to policing effort for Super-areas 3+4+5+6 (top) and Super-area 8+ (bottom) with WCRL SWG agreements on the poaching trends. Results shown normalised to the 2008 value set to 1 for Super-area 8+ or to the 2009 value set to 1 for Super-area 3+4+5+6.